



KALIBRY

KALIBRE
SPRAWDZIANY



2018

Obsah | Obsah | Zawartość

Metrický závit - standardní stoupání
Metrický závit - štandardné st.
Gwint metryczny - standard. skok gwintu

M **3**

Unifikovaný palcový závit
Unifikovaný palcový závit
Gwint calowy

UNS
UN **39**

Metrický závit - nestandardní stoupání
Metrický závit - neštandardné stúpanie
Gwint metryczny - niestandard. skok gwintu

M **4-31**

Unifikovaný palcový závit
Unifikovaný palcový závit
Gwint calowy

UNJC **40**

Trubkový závit válcový
Růrkový závit valcový
Gwint cylindryczny rurowy

G **32**

Unifikovaný palcový závit
Unifikovaný palcový závit
Gwint calowy

UNJF **40**

Whitworthův závit
Whitworthov závit
Gwint Whitwortha

BSW **33-34**

Trubkový závit kuželový
Růrkový závit kuželový
Gwint rurowy stożkowy

NPT **41**

Whitworthův závit
Whitworthov závit
Gwint Whitwortha

BSF **34**

Trubkový závit kuželový
Růrkový závit kuželový
Gwint rurowy stożkowy

NPTF **41**

Whitworthův závit trubkový kuželový
Whitworthov závit rúrkový kuželový
Gwint Whitwortha rurowy stożkowy

R **35**

Lichoběžníkový rovnoramenný závit
Lichobežníkový rovnoramenný závit
Gwint równoramienny trapezowy

Tr **42**

Pancéřový závit
Pancierový závit
Gwint pancerny

Pg **35**

Mezní závitový trn pro opravu závitů
Medzný závitový trň pre opravu závitov
Sprawdzian graniczny do naprawy gwintów

EG M **EG MF**
EG UNC **EG UNF** **43**

Unifikovaný palcový závit
Unifikovaný palcový závit
Gwint calowy

UNC **36**

Mezní válečkový kalibr
Medzný válečkový kaliber
Sprawdzian graniczny tłoczkowy

44

Unifikovaný palcový závit
Unifikovaný palcový závit
Gwint calowy

UNF **37**

Nastavovací kroužek
Nastavovací krúžok
Sprawdzian pierścieniowy

45

Unifikovaný palcový závit
Unifikovaný palcový závit
Gwint calowy

UNEF **38**

Sady
Sady
Zestawy

46



KINEX Measuring s.r.o.

Podnikatelská 586
190 11 Praha 9
Czech Republic

tel.: +420 724 486 309
objednavky@kinexmeasuring.com



KINEX Measuring a.s.

1. mája 1200
014 01 Bytča
Slovak Republic

tel.: +421 948 790 406
objbyt@kinexmeasuring.com



KINEX Measuring s.r.o.

Podnikatelská 586
190 11 Praha 9
Czech Republic

tel.: +48 784 764 696
kinexpolska@kinexmeasuring.com



KALIBRY

Používají se ve strojírenství pro svou jednoduchost a rychlost použití nejen v sériové a hromadné výrobě pro kontrolu rozměrů výrobku. Jednoduchost použití spočívá v tom, že dobrá strana kalibru se musí dát nasunout do otvoru, zmetková naopak nesmí, pak je měřený rozměr správný. Pokud se dobrá ani zmetková strana kalibru nedá nasunout, jedná se o opravitelný zmetek. Pokud se dobrá i zmetková strana kalibru nasunout dá, jedná se o neopravitelný zmetek. Dobrá strana kalibru bývá delší a zmetková strana kratší. Pro snadné rozlišení je zmetková část označena červeným proužkem, případně červeným bodem.

Při měření kalibrem tedy nezjistíme číselnou hodnotu měřeného rozměru, ale zda součást vyhovuje nebo je opravitelná či zmetková. Měření je velmi rychlé, jednoduché a málo náchylné k chybám. Spolehlivost takového měření je velmi vysoká.

Vnitřní závit – mezní závitové trny

Menší rozměry jsou v oboustranném provedení. Pro větší rozměry se kalibr vyrábí jako dva samostatné jednostranné kalibry v sadě. Zmetková strana je označena obvykle červeným proužkem a je kratší. Dobrá strana musí jít do závitu našroubovat po celé délce, zmetková strana maximálně jedním až dvěma závity.

Vnější závit – mezní závitové kroužky

Rozlišujeme dobrou a zmetkovou stranu. Zmetková strana je označena červeným bodem, případně červenou drážkou po obvodu. Kroužek představující dobrou stranu musí jít na závit našroubovat po celé délce, kroužek představující zmetkovou stranu maximálně jedním až dvěma závity.

Kalibry na vnitřní rozměry - válečkové kalibry

Pro menší rozměry jsou v oboustranném provedení, zmetková strana je kratší než dobrá strana. Pro větší rozměry se kalibr vyrábí jako dva samostatné jednostranné kalibry v sadě – představující dobrou a zmetkovou stranu. Pro ještě větší rozměry nemají tyto kalibry tvar celého kruhu a jsou ploché. Pro největší rozměry mají kalibry tvar tyčinek se zakulacenými konci.

Kalibry na vnější rozměry - třmenové kalibry

Klasický třmenový kalibr je oboustranný, zmetková strana bývá označena červeně. S jednostranným kalibrem bývá měření rychlejší, nasouvá se na součást pouze jednou. Dobrá součást projde pouze první částí kalibru, zmetková i druhou anebo neprojde vůbec žádnou.

Nastavovací kroužky

Slouží k přesnému nastavení měřicích přístrojů, zejména pak dutinoměru, které jsou určeny pro měření vnitřních válcových otvorů. Nastavovací kroužky mají vysokou odolnost vůči mechanickému opotřebení či poškození.



KALIBRE

Používajú sa v strojárstve pre svoju jednoduchosť a rýchlosť použitia nielen v sériovej a hromadnej výrobe pre kontrolu rozmerov výrobku. Jednoduchosť použitia spočíva v tom, že dobrá strana kalibra sa musí dať nasunúť do otvoru, zmetková naopak nesmie, potom je meraný rozmer správny. Pokiaľ sa dobrá ani zmetková strana kalibra nedá nasunúť, jedná sa o opraviteľný zmetok. Pokiaľ sa dobrá i zmetková strana kalibra dá nasunúť, jedná sa o neopraviteľný zmetok. Dobrá strana kalibra býva dlhšia a zmetková strana kratšia. Pre jednoduchšie rozlíšenie je zmetková časť označená červeným prúžkom, prípadne červeným bodom.

Pri meraní kalibrom teda nezistíme číselnú hodnotu meraného rozmeru, ale či súčasť vyhovuje alebo je opraviteľná či zmetková. Meranie je veľmi rýchle, jednoduché a málo náchylné k chybám. Spôľahlivosť takeého merania je veľmi vysoká.

Vnútorň závit – medzné závitové trne

Menšie rozmery sú v obojstrannom prevedení. Pre väčšie rozmery sa kalibre vyrábajú ako dva samostatné jednostranné kalibre v sade. Zmetková strana je označená obvykle červeným prúžkom a je kratší. Dobrá strana musí ísť do závitu naskrutkovať po celej dĺžke, zmetková strana maximálne jedným až dvoma závitmi.

Vonkajší závit – medzné závitové krúžky

Rozlišujeme dobrú a zmetkovú stranu. Zmetková strana je označená červeným bodom, prípadne červenú drážku po obvode. Krúžok predstavujúci dobrú stranu musí ísť na závit naskrutkovať po celej dĺžke, krúžok predstavujúci zmetkovú stranu maximálne jedným až dvoma závitmi.

Kalibre na vnútorné rozmery - valčekové kalibre

Pre menšie rozmery sú v obojstrannom prevedení, zmetková strana je kratšia než dobrá strana. Pre väčšie rozmery sa kalibre vyrábajú ako dva samostatné jednostranné kalibre v sade – predstavujúci dobrú a zmetkovú stranu. Pre ešte väčšie rozmery nemajú tieto kalibre tvar celého kruhu a sú ploché. Pre najväčšie rozmery majú kalibre tvar tyčinek so zaguľatenými koncami.

Kalibre na vonkajšie rozmery - strmeňové kalibre

Klasický strmeňový kalibr je obojstranný, zmetková strana býva označená červenou. S jednostranným kalibrom býva meranie rýchlejšie, nasúva sa na súčiastku iba raz. Dobrá časť prejde iba prvou časťou kalibru, zmetková i druhou alebo neprejde vôbec žiadnou.

Nastavovací kroužky

Slúžia k presnému nastaveniu meracích prístrojov, hlavne dutinomerov, ktoré sú určené pre meranie vnútorných valcových otvorov. Nastavovacie krúžky majú vysokú odolnosť voči mechanickému opotrebeniu či poškodeniu.



SPRAWDZIANY

Sprawdzian – używany w przemyśle precyzyjny przyrząd pomiarowy przy pomocy którego stwierdzamy, czy dany wymiar przedmiotu jest prawidłowy i nie przekracza wartości granicznej (dolnej i górnej). Sprawdzian zazwyczaj wykonany jest ze stali nierdzewnej, hartowanej lub narzędziowej. W zależności od rodzaju zadania sprawdziany dzielą się na sprawdziany wymiaru i kształtu. Do najczęściej stosowanych sprawdzianów wymiaru zalicza się sprawdziany do otworów, wałków, stożków, gwintów. W produkcji seryjnej i masowej, ze względów technicznych i ekonomicznych, stosuje się powszechnie sprawdziany będące narzędziami pomiarowymi przeznaczonymi do ściśle określonych zadań kontrolnych. Służą one do stwierdzenia czy wymiary, kształt lub działanie sprawdzanego przedmiotu nie wykraczają poza granice ustalonych tolerancji. Mierzenie sprawdzianem jest bardzo proste i jednocześnie bardzo precyzyjne.

Gwint wewnętrzny - sprawdzian graniczny tłoczowy

Sprawdzian dla mniejszych rozmiarów jest dwustronny a dla większych rozmiarów produkuje się w dwóch częściach jako komplet. Nieprzechodnia strona sprawdzianu jest oznaczona przeważnie czerwonym krążkiem i jest krótsza. Strona przechodnia sprawdzianu jest dłuższa i musi się dać wkręcić na całej długości gwintu, nieprzechodnia maksymalnie tylko dwa obroty gwintu.

Gwint zewnętrzny - sprawdzian graniczny pierścieniowy

Mamy przechodnią i nieprzechodnią część sprawdzianu, nieprzechodnia część jest oznaczona czerwonym kolorem wzdłuż gwintu lub czerwoną kropką na górnej części. Przechodnią część nakrecamy na całą długość gwintu, nieprzechodnią wkręcimy maksymalnie jeden do dwóch obrotów pierścienia.

Sprawdziany do zewnętrznych rozmiarów

Klasyczny sprawdzian tego typu jest dwustronny, nieprzechodnia część jest oznaczona czerwonym kolorem. Z jednostronnym sprawdzianem jest pomiar szybszy, nasuwa się na mierzoną powierzchnię tylko raz. Sprawdzana część która jest w normie przejdzie tylko pierwszą częścią sprawdzianu, jeżeli nie trzyma porządkanych rozmiarów to przejdzie przez sprawdzian całkowicie lub w ogóle nie przejdzie.

Sprawdziany do rozmiarów wewnętrznych

Dla mniejszych rozmiarów są obustronne, nieprzechodnia część jest krótsza od przechodniej. Dla większych rozmiarów produkuje się jako dwa sprawdziany oddzielne w komplecie z nieprzechodnią i przechodnią częścią. Dla jeszcze większych rozmiarów są płaskie i są niepełnym kręgiem, dla największych rozmiarów sprawdziany mają wygląd małej tyczki z zaokrąglonymi końcami.

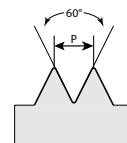
Sprawdziany do nastawiania

Służą do dokładnego ustawienia przyrządów pomiarowych a w szczególności średnicówek, które służą do pomiaru otworów. Są bardzo odporne przeciwko uszkodzeniom mechanicznym czy zużyciu.

Kalibry | Kalibre | Sprawdziany

METRICKÝ ZÁVIT - standardní stoupání
 METRICKÝ ZÁVIT - štandardné stúpanie
 GWINT METRYCZNY - standardowy skok gwintu

DIN
13



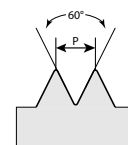
Na objednávku dodáme i v provedení s levým závitem.
 Na objednávku dodáme aj v prevedení s ľavým závitom.
 Na życzenie dostarczamy również wersję z lewym gwintem.

STANDARDNÍ STOUPÁNÍ
ŠTANDARDNÉ STÚPANIE
STANDARDOWY SKOK GWINTU

| | | 6H | | 6G | | | | 6H | | 6G | |
|-------|--------|------------|------------|------|--------|----------|----------|----|--------|------|------|
| | | | | | | | | | | | |
| d | P [mm] | code | code | d | P [mm] | code | code | d | P [mm] | code | code |
| M 0,5 | 0,125 | 93000,5-4H | | M 8 | 1,25 | 93008-6H | 93008-6G | | | | |
| M 0,6 | 0,15 | 93000,6-4H | | M 9 | 1,25 | 93009-6H | 93009-6G | | | | |
| M 0,7 | 0,175 | 93000,7-4H | | M 10 | 1,5 | 93010-6H | 93010-6G | | | | |
| M 0,8 | 0,2 | 93000,8-4H | | M 11 | 1,5 | 93011-6H | 93011-6G | | | | |
| M 0,9 | 0,225 | 93000,9-4H | | M 12 | 1,75 | 93012-6H | 93012-6G | | | | |
| M 1 | 0,25 | 93001,5-H | | M 14 | 2 | 93014-6H | 93014-6G | | | | |
| M 1,1 | 0,25 | 93001,1-5H | | M 16 | 2 | 93016-6H | 93016-6G | | | | |
| M 1,2 | 0,25 | 93001,2-5H | | M 18 | 2,5 | 93018-6H | 93018-6G | | | | |
| M 1,4 | 0,3 | 93001,4-5H | | M 20 | 2,5 | 93020-6H | 93020-6G | | | | |
| M 1,6 | 0,35 | 93001,6-6H | 93001,6-6G | M 22 | 2,5 | 93022-6H | 93022-6G | | | | |
| M 1,7 | 0,35 | 93001,7-6H | | M 24 | 3 | 93024-6H | 93024-6G | | | | |
| M 1,8 | 0,35 | 93001,8-6H | 93001,8-6G | M 27 | 3 | 93027-6H | 93027-6G | | | | |
| M 2 | 0,4 | 93002-6H | 93002-6G | M 30 | 3,5 | 93030-6H | 93030-6G | | | | |
| M 2,2 | 0,45 | 93002,2-6H | 93002,2-6G | M 33 | 3,5 | 93033-6H | 93033-6G | | | | |
| M 2,3 | 0,4 | 93002,3-6H | | M 36 | 4 | 93036-6H | 93036-6G | | | | |
| M 2,5 | 0,45 | 93002,5-6H | 93002,5-6G | M 39 | 4 | 93039-6H | 93039-6G | | | | |
| M 2,6 | 0,45 | 93002,6-6H | | M 42 | 4,5 | 93042-6H | 93042-6G | | | | |
| M 3 | 0,5 | 93003-6H | 93003-6G | M 45 | 4,5 | 93045-6H | 93045-6G | | | | |
| M 3,5 | 0,6 | 93003,5-6H | 93003,5-6G | M 48 | 5 | 93048-6H | 93048-6G | | | | |
| M 4 | 0,7 | 93004-6H | 93004-6G | M 52 | 5 | 93052-6H | 93052-6G | | | | |
| M 4,5 | 0,75 | 93004,5-6H | 93004,5-6G | M 56 | 5,5 | 93056-6H | 93056-6G | | | | |
| M 5 | 0,8 | 93005-6H | 93005-6G | M 60 | 5,5 | 93060-6H | 93060-6G | | | | |
| M 6 | 1 | 93006-6H | 93006-6G | M 64 | 6 | 93064-6H | 93064-6G | | | | |
| M 7 | 1 | 93007-6H | 93007-6G | M 68 | 6 | 93068-6H | 93068-6G | | | | |

Kalibry | Kalibre | Sprawdziany

METRICKÝ ZÁVIT - nestandardní stoupání
 METRICKÝ ZÁVIT - neštandardné stúpanie
 GWINT METRYCZNY - niestandardowy skok gwintu



Na objednávku dodáme i v provedení s levým závitem.
 Na objednávku dodáme aj v provedení s ľavým závitom.
 Na życzenie dostarczamy również wersję z lewym gwintem.

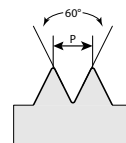
NESTANDARDNÍ STOUPÁNÍ
NEŠTANDARDNÉ STÚPANIE
NIESTANDARDOWY SKOK GWINTU

| | | 6H | | 6G | | | | 6H | | 6G | | | | 6H | | 6G | |
|-------|--------|--------------|--------------|-------------------|--------|-------------------|--------------|-------------------|--------|-------------------|-------------|---|--------|------|------|----|--|
| | | | | | | | | | | | | | | | | | |
| d | P [mm] | code | code | d | P [mm] | code | code | d | P [mm] | code | code | d | P [mm] | code | code | | |
| M 1 | 0,2 | 93001x02-5H | 93001x02-6G | M 5 | 0,35 | 93005x35-6H | 93005x35-6G | M 18 | 0,5 | 93018x05-6H | 93018x05-6G | | | | | | |
| M 1,2 | 0,2 | 93001,2x02-H | 93001,2x02-G | M 6 | 0,35 | 93006x35-6H | 93006x35-6G | M 19 | 0,5 | 93019x05-6H | 93019x05-6G | | | | | | |
| M 1,4 | 0,2 | 93001,4x02-H | 93001,4x02-G | M 6,5 | 0,35 | 93006,5x35-H | 93006,5x35-G | M 20 | 0,5 | 93020x05-6H | 93020x05-6G | | | | | | |
| M 1,6 | 0,2 | 93001,6x02-H | 93001,6x02-G | M 7 | 0,35 | 93007x35-6H | 93007x35-6G | M 21 | 0,5 | 93021x05-6H | 93021x05-6G | | | | | | |
| M 1,8 | 0,2 | 93001,8x02-H | 93001,8x02-G | M 7,5 | 0,35 | 93007,5x35-H | 93007,5x35-G | M 22 | 0,5 | 93022x05-6H | 93022x05-6G | | | | | | |
| M 2 | 0,2 | 93002x02-5H | 93002x02-6G | M 8 | 0,35 | 93008x35-6H | 93008x35-6G | M 23 | 0,5 | 93023x05-6H | 93023x05-6G | | | | | | |
| M 2,2 | 0,2 | 93002,2x2-5H | 93002,2x2-G | M 9 | 0,35 | 93009x35-6H | 93009x35-6G | M 24 | 0,5 | 93024x05-6H | 93024x05-6G | | | | | | |
| M 2,5 | 0,2 | 93002,5x02-H | 93002,5x02-G | M 9,5 | 0,35 | 93009,5x35-H | 93009,5x35-G | M 25 | 0,5 | 93025x05-6H | 93025x05-6G | | | | | | |
| M 3 | 0,2 | 93003x02-6H | 93003x02-6G | M 10 | 0,35 | 93010x35-6H | 93010x35-6G | M 26 | 0,5 | 93026x05-6H | 93026x05-6G | | | | | | |
| M 3,5 | 0,2 | 93003,5x02-H | 93003,5x02-G | M 2,3 0,4 | | 93002,3-6H | 93002,3-6G | M 27 | 0,5 | 93027x05-6H | 93027x05-6G | | | | | | |
| M 4 | 0,2 | 93004x02-6H | 93004x02-6G | M 2,5 0,45 | | 93002,5-6H | 93002,5-6G | M 28 | 0,5 | 93028x05-6H | 93028x05-6G | | | | | | |
| M 4,5 | 0,2 | 93004,5x02-H | 93004,5x02-G | M 2,6 0,45 | | 93002,6-6H | 93002,6-6G | M 29 | 0,5 | 93029x05-6H | 93029x05-6G | | | | | | |
| M 5 | 0,2 | 93005x02-6H | 93005x02-6G | M 3 0,5 | | 93003-6H | 93003-6G | M 30 | 0,5 | 93030x05-6H | 93030x05-6G | | | | | | |
| M 6 | 0,2 | 93006x02-6H | 93006x02-6G | M 3,5 | 0,5 | 93003,5x05-H | 93003,5x05-G | M 31 | 0,5 | 93031x05-6H | 93031x05-6G | | | | | | |
| M 1,4 | 0,25 | 93001,4x25-H | 93001,4x25-G | M 4 | 0,5 | 93004x05-6H | 93004x05-6G | M 32 | 0,5 | 93032x05-6H | 93032x05-6G | | | | | | |
| M 1,6 | 0,25 | 93001,6x25-H | 93001,6x25-G | M 4,5 | 0,5 | 93004,5x05-H | 93004,5x05-G | M 33 | 0,5 | 93033x05-6H | 93033x05-6G | | | | | | |
| M 1,8 | 0,25 | 93001,8x25-H | 93001,8x25-G | M 5 | 0,5 | 93005x05-6H | 93005x05-6G | M 34 | 0,5 | 93034x05-6H | 93034x05-6G | | | | | | |
| M 2 | 0,25 | 93002x25-6H | 93002x25-6G | M 5,5 | 0,5 | 93005,5x05-H | 93005,5x05-G | M 35 | 0,5 | 93035x05-6H | 93035x05-6G | | | | | | |
| M 2,2 | 0,25 | 93002,2x25-H | 93002,2x25-G | M 6 | 0,5 | 93006x05-6H | 93006x05-6G | M 36 | 0,5 | 93036x05-6H | 93036x05-6G | | | | | | |
| M 2,5 | 0,25 | 93002,5x25-H | 93002,5x25-G | M 6,5 | 0,5 | 93006,5x05-H | 93006,5x05-G | M 37 | 0,5 | 93037x05-6H | 93037x05-6G | | | | | | |
| M 3 | 0,25 | 93003x25-6H | 93003x25-6G | M 7 | 0,5 | 93007x05-6H | 93007x05-6G | M 38 | 0,5 | 93038x05-6H | 93038x05-6G | | | | | | |
| M 3,5 | 0,25 | 93003,5x25-H | 93003,5x25-G | M 7,5 | 0,5 | 93007,5x05-H | 93007,5x05-G | M 39 | 0,5 | 93039x05-6H | 93039x05-6G | | | | | | |
| M 4 | 0,25 | 93004x25-6H | 93004x25-6G | M 8 | 0,5 | 93008x05-6H | 93008x05-6G | M 40 | 0,5 | 93040x05-6H | 93040x05-6G | | | | | | |
| M 5 | 0,25 | 93005x25-6H | 93005x25-6G | M 9 | 0,5 | 93009x05-6H | 93009x05-6G | M 3,5 0,6 | | 93003,5-6H | 93003,5-6G | | | | | | |
| M 6 | 0,25 | 93006x25-6H | 93006x25-6G | M 10 | 0,5 | 93010x05-6H | 93010x05-6G | M 4 0,7 | | 93004-6H | 93004-6G | | | | | | |
| M 2 | 0,35 | 93002x35-6H | 93002x35-6G | M 11 | 0,5 | 93011x05-6H | 93011x05-6G | M 4,5 0,75 | | 93004,5-6H | 93004,5-6G | | | | | | |
| M 2,2 | 0,35 | 93002,2x35-H | 93002,2x25-G | M 12 | 0,5 | 93012x05-6H | 93012x05-6G | M 5 | 0,75 | 93005x75-6H | 93005x75-6G | | | | | | |
| M 2,5 | 0,35 | 93002,5x35-H | 93002,5x35-G | M 13 | 0,5 | 93013x05-6H | 93013x05-6G | M 6 | 0,75 | 93006x75-6H | 93006x75-6G | | | | | | |
| M 3 | 0,35 | 93003x35-6H | 93003x35-6G | M 14 | 0,5 | 93014x05-6H | 93014x05-6G | M 7 | 0,75 | 93007x75-6H | 93007x75-6G | | | | | | |
| M 3,5 | 0,35 | 93003,5x35-H | 93003,5x35-G | M 15 | 0,5 | 93015x05-6H | 93015x05-6G | M 8 | 0,75 | 93008x75-6H | 93008x75-6G | | | | | | |
| M 4 | 0,35 | 93004x35-6H | 93004x35-6G | M 16 | 0,5 | 93016x05-6H | 93016x05-6G | M 9 | 0,75 | 93009x75-6H | 93009x75-6G | | | | | | |
| M 4,5 | 0,35 | 93004,5x35-H | 93004,5x35-G | M 17 | 0,5 | 93017x05-6H | 93017x05-6G | M 10 | 0,75 | 93010x75-6H | 93010x75-6G | | | | | | |

Kalibry | Kalibre | Sprawdziany

METRICKÝ ZÁVIT - nestandardní stoupání
 METRICKÝ ZÁVIT - neštandardné stúpanie
 GWINT METRYCZNY - niestandardowy skok gwintu

DIN
13



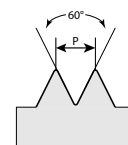
Na objednávku dodáme i v provedení s levým závitem.
 Na objednávku dodáme aj v provedení s ľavým závitom.
 Na życzenie dostarczamy również wersję z lewym gwintem.

NESTANDARDNÍ STROUPÁNÍ
NEŠTANDARDNÉ STÚPANIE
NIESTANDARDOWY SKOK GWINTU

| 6H | | | 6G | | | 6H | | | 6G | | | 6H | | | 6G | | | | |
|------|--------|-------------|-------------|------|--------|------------|------------|------|--------|-------------|-------------|------|--------|-------------|-------------|------|--------|-------------|-------------|
| | | | | | | | | | | | | | | | | | | | |
| d | P [mm] | code | code | d | P [mm] | code | code | d | P [mm] | code | code | d | P [mm] | code | code | d | P [mm] | code | code |
| M 11 | 0,75 | 93011x75-6H | 93011x75-6G | M 7 | 1 | 93007-6H | 93007-6G | M 42 | 1 | 93042x1-6H | 93042x1-6G | M 42 | 1 | 93042x1-6H | 93042x1-6G | M 42 | 1 | 93042x1-6H | 93042x1-6G |
| M 12 | 0,75 | 93012x75-6H | 93012x75-6G | M 8 | 1 | 93008x1-6H | 93008x1-6G | M 45 | 1 | 93045x1-6H | 93045x1-6G | M 45 | 1 | 93045x1-6H | 93045x1-6G | M 45 | 1 | 93045x1-6H | 93045x1-6G |
| M 13 | 0,75 | 93013x75-6H | 93013x75-6G | M 9 | 1 | 93009x1-6H | 93009x1-6G | M 48 | 1 | 93048x1-6H | 93048x1-6G | M 48 | 1 | 93048x1-6H | 93048x1-6G | M 48 | 1 | 93048x1-6H | 93048x1-6G |
| M 14 | 0,75 | 93014x75-6H | 93014x75-6G | M 10 | 1 | 93010x1-6H | 93010x1-6G | M 50 | 1 | 93050x1-6H | 93050x1-6G | M 50 | 1 | 93050x1-6H | 93050x1-6G | M 50 | 1 | 93050x1-6H | 93050x1-6G |
| M 15 | 0,75 | 93015x75-6H | 93015x75-6G | M 11 | 1 | 93011x1-6H | 93011x1-6G | M 52 | 1 | 93052x1-6H | 93052x1-6G | M 52 | 1 | 93052x1-6H | 93052x1-6G | M 52 | 1 | 93052x1-6H | 93052x1-6G |
| M 16 | 0,75 | 93016x75-6H | 93016x75-6G | M 12 | 1 | 93012x1-6H | 93012x1-6G | M 55 | 1 | 93055x1-6H | 93055x1-6G | M 55 | 1 | 93055x1-6H | 93055x1-6G | M 55 | 1 | 93055x1-6H | 93055x1-6G |
| M 17 | 0,75 | 93017x75-6H | 93017x75-6G | M 13 | 1 | 93013x1-6H | 93013x1-6G | M 56 | 1 | 93056x1-6H | 93056x1-6G | M 56 | 1 | 93056x1-6H | 93056x1-6G | M 56 | 1 | 93056x1-6H | 93056x1-6G |
| M 18 | 0,75 | 93018x75-6H | 93018x75-6G | M 14 | 1 | 93014x1-6H | 93014x1-6G | M 58 | 1 | 93058x1-6H | 93058x1-6G | M 58 | 1 | 93058x1-6H | 93058x1-6G | M 58 | 1 | 93058x1-6H | 93058x1-6G |
| M 19 | 0,75 | 93019x75-6H | 93019x75-6G | M 15 | 1 | 93015x1-6H | 93015x1-6G | M 60 | 1 | 93060x1-6H | 93060x1-6G | M 60 | 1 | 93060x1-6H | 93060x1-6G | M 60 | 1 | 93060x1-6H | 93060x1-6G |
| M 20 | 0,75 | 93020x75-6H | 93020x75-6G | M 16 | 1 | 93016x1-6H | 93016x1-6G | M 62 | 1 | 93062x1-6H | 93062x1-6G | M 62 | 1 | 93062x1-6H | 93062x1-6G | M 62 | 1 | 93062x1-6H | 93062x1-6G |
| M 21 | 0,75 | 93021x75-6H | 93021x75-6G | M 17 | 1 | 93017x1-6H | 93017x1-6G | M 64 | 1 | 93064x1-6H | 93064x1-6G | M 64 | 1 | 93064x1-6H | 93064x1-6G | M 64 | 1 | 93064x1-6H | 93064x1-6G |
| M 22 | 0,75 | 93022x75-6H | 93022x75-6G | M 18 | 1 | 93018x1-6H | 93018x1-6G | M 65 | 1 | 93065x1-6H | 93065x1-6G | M 65 | 1 | 93065x1-6H | 93065x1-6G | M 65 | 1 | 93065x1-6H | 93065x1-6G |
| M 23 | 0,75 | 93023x75-6H | 93023x75-6G | M 19 | 1 | 93019x1-6H | 93019x1-6G | M 68 | 1 | 93068x1-6H | 93068x1-6G | M 68 | 1 | 93068x1-6H | 93068x1-6G | M 68 | 1 | 93068x1-6H | 93068x1-6G |
| M 24 | 0,75 | 93024x75-6H | 93024x75-6G | M 20 | 1 | 93020x1-6H | 93020x1-6G | M 70 | 1 | 93070x1-6H | 93070x1-6G | M 70 | 1 | 93070x1-6H | 93070x1-6G | M 70 | 1 | 93070x1-6H | 93070x1-6G |
| M 25 | 0,75 | 93025x75-6H | 93025x75-6G | M 21 | 1 | 93021x1-6H | 93021x1-6G | M 72 | 1 | 93072x1-6H | 93072x1-6G | M 72 | 1 | 93072x1-6H | 93072x1-6G | M 72 | 1 | 93072x1-6H | 93072x1-6G |
| M 26 | 0,75 | 93026x75-6H | 93026x75-6G | M 22 | 1 | 93022x1-6H | 93022x1-6G | M 75 | 1 | 93075x1-6H | 93075x1-6G | M 75 | 1 | 93075x1-6H | 93075x1-6G | M 75 | 1 | 93075x1-6H | 93075x1-6G |
| M 27 | 0,75 | 93027x75-6H | 93027x75-6G | M 23 | 1 | 93023x1-6H | 93023x1-6G | M 76 | 1 | 93076x1-6H | 93076x1-6G | M 76 | 1 | 93076x1-6H | 93076x1-6G | M 76 | 1 | 93076x1-6H | 93076x1-6G |
| M 28 | 0,75 | 93028x75-6H | 93028x75-6G | M 24 | 1 | 93024x1-6H | 93024x1-6G | M 78 | 1 | 93078x1-6H | 93078x1-6G | M 78 | 1 | 93078x1-6H | 93078x1-6G | M 78 | 1 | 93078x1-6H | 93078x1-6G |
| M 29 | 0,75 | 93029x75-6H | 93029x75-6G | M 25 | 1 | 93025x1-6H | 93025x1-6G | M 80 | 1 | 93080x1-6H | 93080x1-6G | M 80 | 1 | 93080x1-6H | 93080x1-6G | M 80 | 1 | 93080x1-6H | 93080x1-6G |
| M 30 | 0,75 | 93030x75-6H | 93030x75-6G | M 26 | 1 | 93026x1-6H | 93026x1-6G | M 8 | 1,25 | 93008-6H | 93008-6G | M 8 | 1,25 | 93008-6H | 93008-6G | M 8 | 1,25 | 93008-6H | 93008-6G |
| M 31 | 0,75 | 93031x75-6H | 93031x75-6G | M 27 | 1 | 93027x1-6H | 93027x1-6G | M 9 | 1,25 | 93009-6H | 93009-6G | M 9 | 1,25 | 93009-6H | 93009-6G | M 9 | 1,25 | 93009-6H | 93009-6G |
| M 32 | 0,75 | 93032x75-6H | 93032x75-6G | M 28 | 1 | 93028x1-6H | 93028x1-6G | M 10 | 1,25 | 93010x125-H | 93010x125-G | M 10 | 1,25 | 93010x125-H | 93010x125-G | M 10 | 1,25 | 93010x125-H | 93010x125-G |
| M 33 | 0,75 | 93033x75-6H | 93033x75-6G | M 29 | 1 | 93029x1-6H | 93029x1-6G | M 12 | 1,25 | 93012x125-H | 93012x125-G | M 12 | 1,25 | 93012x125-H | 93012x125-G | M 12 | 1,25 | 93012x125-H | 93012x125-G |
| M 34 | 0,75 | 93034x75-6H | 93034x75-6G | M 30 | 1 | 93030x1-6H | 93030x1-6G | M 14 | 1,25 | 93014x125-H | 93014x125-G | M 14 | 1,25 | 93014x125-H | 93014x125-G | M 14 | 1,25 | 93014x125-H | 93014x125-G |
| M 35 | 0,75 | 93035x75-6H | 93035x75-6G | M 32 | 1 | 93032x1-6H | 93032x1-6G | M 16 | 1,25 | 93016x125-H | 93016x125-G | M 16 | 1,25 | 93016x125-H | 93016x125-G | M 16 | 1,25 | 93016x125-H | 93016x125-G |
| M 36 | 0,75 | 93036x75-6H | 93036x75-6G | M 33 | 1 | 93033x1-6H | 93033x1-6G | M 18 | 1,25 | 93018x125-H | 93018x125-G | M 18 | 1,25 | 93018x125-H | 93018x125-G | M 18 | 1,25 | 93018x125-H | 93018x125-G |
| M 37 | 0,75 | 93037x75-6H | 93037x75-6G | M 34 | 1 | 93034x1-6H | 93034x1-6G | M 20 | 1,25 | 93020x125-H | 93020x125-G | M 20 | 1,25 | 93020x125-H | 93020x125-G | M 20 | 1,25 | 93020x125-H | 93020x125-G |
| M 38 | 0,75 | 93038x75-6H | 93038x75-6G | M 35 | 1 | 93035x1-6H | 93035x1-6G | M 22 | 1,25 | 93022x125-H | 93022x125-G | M 22 | 1,25 | 93022x125-H | 93022x125-G | M 22 | 1,25 | 93022x125-H | 93022x125-G |
| M 39 | 0,75 | 93039x75-6H | 93039x75-6G | M 36 | 1 | 93036x1-6H | 93036x1-6G | M 24 | 1,25 | 93024x125-H | 93024x125-G | M 24 | 1,25 | 93024x125-H | 93024x125-G | M 24 | 1,25 | 93024x125-H | 93024x125-G |
| M 40 | 0,75 | 93040x75-6H | 93040x75-6G | M 38 | 1 | 93038x1-6H | 93038x1-6G | M 10 | 1,5 | 93010-6H | 93010-6G | M 10 | 1,5 | 93010-6H | 93010-6G | M 10 | 1,5 | 93010-6H | 93010-6G |
| M 5 | 0,8 | 93005-6H | 93005-6G | M 39 | 1 | 93039x1-6H | 93039x1-6G | M 11 | 1,5 | 93011-6H | 93011-6G | M 11 | 1,5 | 93011-6H | 93011-6G | M 11 | 1,5 | 93011-6H | 93011-6G |
| M 6 | 1 | 93006-6H | 93006-6G | M 40 | 1 | 93040x1-6H | 93040x1-6G | M 12 | 1,5 | 93012x15-6H | 93012x15-6G | M 12 | 1,5 | 93012x15-6H | 93012x15-6G | M 12 | 1,5 | 93012x15-6H | 93012x15-6G |

Kalibry | Kalibre | Sprawdziany

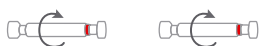
METRICKÝ ZÁVIT - nestandardní stoupání
 METRICKÝ ZÁVIT - neštandardné stúpanie
 GWINT METRYCZNY - niestandardowy skok gwintu



Na objednávku dodáme i v provedení s levým závitem.
 Na objednávku dodáme aj v provedení s ľavým závitom.
 Na życzenie dostarczamy również wersję z lewym gwintem.

NESTANDARDNÍ STROUPÁNÍ
NEŠTANDARDNÉ STÚPANIE
NIESTANDARDOWY SKOK GWINTU

6H 6G



| d | P [mm] | code | code |
|------|--------|-------------|-------------|
| M 13 | 1,5 | 93013x15-6H | 93013x15-6G |
| M 14 | 1,5 | 93014x15-6H | 93014x15-6G |
| M 15 | 1,5 | 93015x15-6H | 93015x15-6G |
| M 16 | 1,5 | 93016x15-6H | 93016x15-6G |
| M 17 | 1,5 | 93017x15-6H | 93017x15-6G |
| M 18 | 1,5 | 93018x15-6H | 93018x15-6G |
| M 19 | 1,5 | 93019x15-6H | 93019x15-6G |
| M 20 | 1,5 | 93020x15-6H | 93020x15-6G |
| M 21 | 1,5 | 93021x15-6H | 93021x15-6G |
| M 22 | 1,5 | 93022x15-6H | 93022x15-6G |
| M 24 | 1,5 | 93024x15-6H | 93024x15-6G |
| M 25 | 1,5 | 93025x15-6H | 93025x15-6G |
| M 26 | 1,5 | 93026x15-6H | 93026x15-6G |
| M 27 | 1,5 | 93027x15-6H | 93027x15-6G |
| M 28 | 1,5 | 93028x15-6H | 93028x15-6G |
| M 30 | 1,5 | 93030x15-6H | 93030x15-6G |
| M 32 | 1,5 | 93032x15-6H | 93032x15-6G |
| M 33 | 1,5 | 93033x15-6H | 93033x15-6G |
| M 34 | 1,5 | 93034x15-6H | 93034x15-6G |
| M 35 | 1,5 | 93035x15-6H | 93035x15-6G |
| M 36 | 1,5 | 93036x15-6H | 93036x15-6G |
| M 38 | 1,5 | 93038x15-6H | 93038x15-6G |
| M 39 | 1,5 | 93039x15-6H | 93039x15-6G |
| M 40 | 1,5 | 93040x15-6H | 93040x15-6G |
| M 42 | 1,5 | 93042x15-6H | 93042x15-6G |
| M 45 | 1,5 | 93045x15-6H | 93045x15-6G |
| M 48 | 1,5 | 93048x15-6H | 93048x15-6G |
| M 50 | 1,5 | 93050x15-6H | 93050x15-6G |
| M 52 | 1,5 | 93052x15-6H | 93052x15-6G |
| M 55 | 1,5 | 93055x15-6H | 93055x15-6G |
| M 56 | 1,5 | 93056x15-6H | 93056x15-6G |
| M 58 | 1,5 | 93058x15-6H | 93058x15-6G |

6H 6G



| d | P [mm] | code | code |
|-------|--------|-------------|-------------|
| M 60 | 1,5 | 93060x15-6H | 93060x15-6G |
| M 62 | 1,5 | 93062x15-6H | 93062x15-6G |
| M 64 | 1,5 | 93064x15-6H | 93064x15-6G |
| M 65 | 1,5 | 93065x15-6H | 93065x15-6G |
| M 68 | 1,5 | 93068x15-6H | 93068x15-6G |
| M 70 | 1,5 | 93070x15-6H | 93070x15-6G |
| M 72 | 1,5 | 93072x15-6H | 93072x15-6G |
| M 75 | 1,5 | 93075x15-6H | 93075x15-6G |
| M 76 | 1,5 | 93076x15-6H | 93076x15-6G |
| M 78 | 1,5 | 93078x15-6H | 93078x15-6G |
| M 80 | 1,5 | 93080x15-6H | 93080x15-6G |
| M 82 | 1,5 | 93082x15-6H | 93082x15-6G |
| M 85 | 1,5 | 93085x15-6H | 93085x15-6G |
| M 88 | 1,5 | 93088x15-6H | 93088x15-6G |
| M 90 | 1,5 | 93090x15-6H | 93090x15-6G |
| M 92 | 1,5 | 93092x15-6H | 93092x15-6G |
| M 95 | 1,5 | 93095x15-6H | 93095x15-6G |
| M 98 | 1,5 | 93098x15-6H | 93098x15-6G |
| M 100 | 1,5 | 93100x15-6H | 93100x15-6G |
| M 102 | 1,5 | 93102x15-6H | 93102x15-6G |
| M 105 | 1,5 | 93105x15-6H | 93105x15-6G |
| M 108 | 1,5 | 93108x15-6H | 93108x15-6G |
| M 110 | 1,5 | 93110x15-6H | 93110x15-6G |
| M 112 | 1,5 | 93112x15-6H | 93112x15-6G |
| M 115 | 1,5 | 93115x15-6H | 93115x15-6G |
| M 118 | 1,5 | 93118x15-6H | 93118x15-6G |
| M 120 | 1,5 | 93120x15-6H | 93120x15-6G |
| M 122 | 1,5 | 93122x15-6H | 93122x15-6G |
| M 125 | 1,5 | 93125x15-6H | 93125x15-6G |
| M 128 | 1,5 | 93128x15-6H | 93128x15-6G |
| M 130 | 1,5 | 93130x15-6H | 93130x15-6G |
| M 132 | 1,5 | 93132x15-6H | 93132x15-6G |

6H 6G

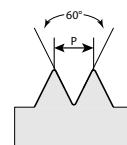


| d | P [mm] | code | code |
|-------|--------|-------------|-------------|
| M 135 | 1,5 | 93135x15-6H | 93135x15-6G |
| M 138 | 1,5 | 93138x15-6H | 93138x15-6G |
| M 140 | 1,5 | 93140x15-6H | 93140x15-6G |
| M 142 | 1,5 | 93142x15-6H | 93142x15-6G |
| M 145 | 1,5 | 93145x15-6H | 93145x15-6G |
| M 148 | 1,5 | 93148x15-6H | 93148x15-6G |
| M 150 | 1,5 | 93150x15-6H | 93150x15-6G |
| M 152 | 1,5 | 93152x15-6H | 93152x15-6G |
| M 155 | 1,5 | 93155x15-6H | 93155x15-6G |
| M 158 | 1,5 | 93158x15-6H | 93158x15-6G |
| M 160 | 1,5 | 93160x15-6H | 93160x15-6G |
| M 162 | 1,5 | 93162x15-6H | 93162x15-6G |
| M 165 | 1,5 | 93165x15-6H | 93165x15-6G |
| M 168 | 1,5 | 93168x15-6H | 93168x15-6G |
| M 170 | 1,5 | 93170x15-6H | 93170x15-6G |
| M 172 | 1,5 | 93172x15-6H | 93172x15-6G |
| M 175 | 1,5 | 93175x15-6H | 93175x15-6G |
| M 178 | 1,5 | 93178x15-6H | 93178x15-6G |
| M 180 | 1,5 | 93180x15-6H | 93180x15-6G |
| M 182 | 1,5 | 93182x15-6H | 93182x15-6G |
| M 185 | 1,5 | 93185x15-6H | 93185x15-6G |
| M 188 | 1,5 | 93188x15-6H | 93188x15-6G |
| M 190 | 1,5 | 93190x15-6H | 93190x15-6G |
| M 192 | 1,5 | 93192x15-6H | 93192x15-6G |
| M 192 | 1,5 | 93192x15-6H | 93192x15-6G |
| M 195 | 1,5 | 93195x15-6H | 93195x15-6G |
| M 195 | 1,5 | 93195x15-6H | 93195x15-6G |
| M 198 | 1,5 | 93198x15-6H | 93198x15-6G |
| M 198 | 1,5 | 93198x15-6H | 93198x15-6G |
| M 200 | 1,5 | 93200x15-6H | 93200x15-6G |
| M 200 | 1,5 | 93200x15-6H | 93200x15-6G |
| M 202 | 1,5 | 93202x15-6H | 93202x15-6G |

Kalibry | Kalibre | Sprawdziany

METRICKÝ ZÁVIT - nestandardní stoupání
 METRICKÝ ZÁVIT - neštandardné stúpanie
 GWINT METRYCZNY - niestandardowy skok gwintu

DIN
13



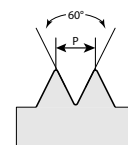
Na objednávku dodáme i v provedení s levým závitem.
 Na objednávku dodáme aj v prevedení s ľavým závitom.
 Na życzenie dostarczamy również wersję z lewym gwintem.

NESTANDARDNÍ STOUPÁNÍ
NEŠTANDARDNÉ STÚPANIE
NIESTANDARDOWY SKOK GWINTU

| | | | 6H | | 6G | | | | | 6H | | 6G | | | | | 6H | | 6G | |
|-------------|-------------|-----------------|-------------|------|--------|------------|------------|-------|--------|------------|------------|----|--------|------|------|---|--------|------|------|--|
| | | | | | | | | | | | | | | | | | | | | |
| d | P [mm] | code | code | d | P [mm] | code | code | d | P [mm] | code | code | d | P [mm] | code | code | d | P [mm] | code | code | |
| M 205 | 1,5 | 93205x15-6H | 93205x15-6G | M 33 | 2 | 93033x2-6H | 93033x2-6G | M 98 | 2 | 93098x2-6H | 93098x2-6G | | | | | | | | | |
| M 208 | 1,5 | 93208x15-6H | 93208x15-6G | M 34 | 2 | 93034x2-6H | 93034x2-6G | M 100 | 2 | 93100x2-6H | 93100x2-6G | | | | | | | | | |
| M 210 | 1,5 | 93210x15-6H | 93210x15-6G | M 35 | 2 | 93035x2-6H | 93035x2-6G | M 102 | 2 | 93102x2-6H | 93102x2-6G | | | | | | | | | |
| M 212 | 1,5 | 93212x15-6H | 93212x15-6G | M 36 | 2 | 93036x2-6H | 93036x2-6G | M 105 | 2 | 93105x2-6H | 93105x2-6G | | | | | | | | | |
| M 215 | 1,5 | 93215x15-6H | 93215x15-6G | M 38 | 2 | 93038x2-6H | 93038x2-6G | M 108 | 2 | 93108x2-6H | 93108x2-6G | | | | | | | | | |
| M 218 | 1,5 | 93218x15-6H | 93218x15-6G | M 39 | 2 | 93039x2-6H | 93039x2-6G | M 110 | 2 | 93110x2-6H | 93110x2-6G | | | | | | | | | |
| M 220 | 1,5 | 93220x15-6H | 93220x15-6G | M 40 | 2 | 93040x2-6H | 93040x2-6G | M 112 | 2 | 93112x2-6H | 93112x2-6G | | | | | | | | | |
| M 222 | 1,5 | 93222x15-6H | 93222x15-6G | M 42 | 2 | 93042x2-6H | 93042x2-6G | M 115 | 2 | 93115x2-6H | 93115x2-6G | | | | | | | | | |
| M 225 | 1,5 | 93225x15-6H | 93225x15-6G | M 45 | 2 | 93045x2-6H | 93045x2-6G | M 118 | 2 | 93118x2-6H | 93118x2-6G | | | | | | | | | |
| M 228 | 1,5 | 93228x15-6H | 93228x15-6G | M 48 | 2 | 93048x2-6H | 93048x2-6G | M 120 | 2 | 93120x2-6H | 93120x2-6G | | | | | | | | | |
| M 230 | 1,5 | 93230x15-6H | 93230x15-6G | M 50 | 2 | 93050x2-6H | 93050x2-6G | M 122 | 2 | 93122x2-6H | 93122x2-6G | | | | | | | | | |
| M 232 | 1,5 | 93232x15-6H | 93232x15-6G | M 52 | 2 | 93052x2-6H | 93052x2-6G | M 125 | 2 | 93125x2-6H | 93125x2-6G | | | | | | | | | |
| M 235 | 1,5 | 93235x15-6H | 93235x15-6G | M 55 | 2 | 93055x2-6H | 93055x2-6G | M 128 | 2 | 93128x2-6H | 93128x2-6G | | | | | | | | | |
| M 238 | 1,5 | 93238x15-6H | 93238x15-6G | M 56 | 2 | 93056x2-6H | 93056x2-6G | M 130 | 2 | 93130x2-6H | 93130x2-6G | | | | | | | | | |
| M 240 | 1,5 | 93240x15-6H | 93240x15-6G | M 58 | 2 | 93058x2-6H | 93058x2-6G | M 132 | 2 | 93132x2-6H | 93132x2-6G | | | | | | | | | |
| M 242 | 1,5 | 93242x15-6H | 93242x15-6G | M 60 | 2 | 93060x2-6H | 93060x2-6G | M 135 | 2 | 93135x2-6H | 93135x2-6G | | | | | | | | | |
| M 245 | 1,5 | 93245x15-6H | 93245x15-6G | M 62 | 2 | 93062x2-6H | 93062x2-6G | M 138 | 2 | 93138x2-6H | 93138x2-6G | | | | | | | | | |
| M 248 | 1,5 | 93248x15-6H | 93248x15-6G | M 64 | 2 | 93064x2-6H | 93064x2-6G | M 140 | 2 | 93140x2-6H | 93140x2-6G | | | | | | | | | |
| M 250 | 1,5 | 93250x15-6H | 93250x15-6G | M 65 | 2 | 93065x2-6H | 93065x2-6G | M 142 | 2 | 93142x2-6H | 93142x2-6G | | | | | | | | | |
| M 12 | 1,75 | 93012-6H | 93012-6G | M 68 | 2 | 93068x2-6H | 93068x2-6G | M 145 | 2 | 93145x2-6H | 93145x2-6G | | | | | | | | | |
| M 14 | 2 | 93014-6H | 93014-6G | M 70 | 2 | 93070x2-6H | 93070x2-6G | M 148 | 2 | 93148x2-6H | 93148x2-6G | | | | | | | | | |
| M 16 | 2 | 93016-6H | 93016-6G | M 72 | 2 | 93072x2-6H | 93072x2-6G | M 150 | 2 | 93150x2-6H | 93150x2-6G | | | | | | | | | |
| M 18 | 2 | 93018x2-6H | 93018x2-6G | M 75 | 2 | 93075x2-6H | 93075x2-6G | M 152 | 2 | 93152x2-6H | 93152x2-6G | | | | | | | | | |
| M 20 | 2 | 93020x2-6H | 93020x2-6G | M 76 | 2 | 93076x2-6H | 93076x2-6G | M 155 | 2 | 93155x2-6H | 93155x2-6G | | | | | | | | | |
| M 22 | 2 | 93022x2-6H | 93022x2-6G | M 78 | 2 | 93078x2-6H | 93078x2-6G | M 158 | 2 | 93158x2-6H | 93158x2-6G | | | | | | | | | |
| M 24 | 2 | 93024x2-6H | 93024x2-6G | M 80 | 2 | 93080x2-6H | 93080x2-6G | M 160 | 2 | 93160x2-6H | 93160x2-6G | | | | | | | | | |
| M 25 | 2 | 93025x2-6H | 93025x2-6G | M 82 | 2 | 93082x2-6H | 93082x2-6G | M 162 | 2 | 93162x2-6H | 93162x2-6G | | | | | | | | | |
| M 26 | 2 | 93026x2-6H | 93026x2-6G | M 85 | 2 | 93085x2-6H | 93085x2-6G | M 165 | 2 | 93165x2-6H | 93165x2-6G | | | | | | | | | |
| M 27 | 2 | 93027x2-6H | 93027x2-6G | M 88 | 2 | 93088x2-6H | 93088x2-6G | M 168 | 2 | 93168x2-6H | 93168x2-6G | | | | | | | | | |
| M 28 | 2 | 93028x2-6H | 93028x2-6G | M 90 | 2 | 93090x2-6H | 93090x2-6G | M 170 | 2 | 93170x2-6H | 93170x2-6G | | | | | | | | | |
| M 30 | 2 | 93030x2-6H | 93030x2-6G | M 92 | 2 | 93092x2-6H | 93092x2-6G | M 172 | 2 | 93172x2-6H | 93172x2-6G | | | | | | | | | |
| M 32 | 2 | 93032x2-6H | 93032x2-6G | M 95 | 2 | 93095x2-6H | 93095x2-6G | M 175 | 2 | 93175x2-6H | 93175x2-6G | | | | | | | | | |

Kalibry | Kalibre | Sprawdziany

METRICKÝ ZÁVIT - nestandardní stoupání
 METRICKÝ ZÁVIT - neštandardné stúpanie
 GWINT METRYCZNY - niestandardowy skok gwintu



Na objednávku dodáme i v provedení s levým závitem.
 Na objednávku dodáme aj v provedení s ľavým závitom.
 Na życzenie dostarczamy również wersję z lewym gwintem.

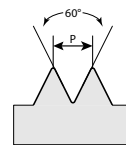
NESTANDARDNÍ STOUPÁNÍ
NEŠTANDARDNÉ STÚPANIE
NIESTANDARDOWY SKOK GWINTU

| | | 6H | | 6G | | | | 6H | | 6G | | | | 6H | | 6G | |
|-------|--------|------------|------------|-------|--------|------------|------------|-------|--------|------------|------------|---|--------|------|------|----|--|
| | | | | | | | | | | | | | | | | | |
| d | P [mm] | code | code | d | P [mm] | code | code | d | P [mm] | code | code | d | P [mm] | code | code | | |
| M 178 | 2 | 93178x2-6H | 93178x2-6G | M 22 | 2,5 | 93022-6H | 93022-6G | M 115 | 3 | 93115x3-6H | 93115x3-6G | | | | | | |
| M 180 | 2 | 93180x2-6H | 93180x2-6G | M 24 | 3 | 93024-6H | 93024-6G | M 120 | 3 | 93120x3-6H | 93120x3-6G | | | | | | |
| M 182 | 2 | 93182x2-6H | 93182x2-6G | M 27 | 3 | 93027-6H | 93027-6G | M 125 | 3 | 93125x3-6H | 93125x3-6G | | | | | | |
| M 185 | 2 | 93185x2-6H | 93185x2-6G | M 30 | 3 | 93030x3-6H | 93030x3-6G | M 130 | 3 | 93130x3-6H | 93130x3-6G | | | | | | |
| M 185 | 2 | 93185x2-6H | 93185x2-6G | M 33 | 3 | 93033x3-6H | 93033x3-6G | M 135 | 3 | 93135x3-6H | 93135x3-6G | | | | | | |
| M 188 | 2 | 93188x2-6H | 93188x2-6G | M 36 | 3 | 93036x3-6H | 93036x3-6G | M 140 | 3 | 93140x3-6H | 93140x3-6G | | | | | | |
| M 190 | 2 | 93190x2-6H | 93190x2-6G | M 39 | 3 | 93039x3-6H | 93039x3-6G | M 145 | 3 | 93145x3-6H | 93145x3-6G | | | | | | |
| M 192 | 2 | 93192x2-6H | 93192x2-6G | M 40 | 3 | 93040x3-6H | 93040x3-6G | M 150 | 3 | 93150x3-6H | 93150x3-6G | | | | | | |
| M 198 | 2 | 93198x2-6H | 93198x2-6G | M 42 | 3 | 93042x3-6H | 93042x3-6G | M 155 | 3 | 93155x3-6H | 93155x3-6H | | | | | | |
| M 200 | 2 | 93200x2-6H | 93200x2-6G | M 45 | 3 | 93045x3-6H | 93045x3-6G | M 160 | 3 | 93160x3-6H | 93160x3-6H | | | | | | |
| M 202 | 2 | 93202x2-6H | 93202x2-6G | M 48 | 3 | 93048x3-6H | 93048x3-6G | M 165 | 3 | 93165x3-6H | 93165x3-6H | | | | | | |
| M 205 | 2 | 93205x2-6H | 93205x2-6G | M 50 | 3 | 93050x3-6H | 93050x3-6G | M 170 | 3 | 93170x3-6H | 93170x3-6H | | | | | | |
| M 208 | 2 | 93208x2-6H | 93208x2-6G | M 52 | 3 | 93052x3-6H | 93052x3-6G | M 175 | 3 | 93175x3-6H | 93175x3-6H | | | | | | |
| M 210 | 2 | 93210x2-6H | 93210x2-6G | M 55 | 3 | 93055x3-6H | 93055x3-6G | M 180 | 3 | 93180x3-6H | 93180x3-6H | | | | | | |
| M 212 | 2 | 93212x2-6H | 93212x2-6G | M 56 | 3 | 93056x3-6H | 93056x3-6G | M 185 | 3 | 93185x3-6H | 93185x3-6H | | | | | | |
| M 215 | 2 | 93215x2-6H | 93215x2-6G | M 58 | 3 | 93058x3-6H | 93058x3-6G | M 190 | 3 | 93190x3-6H | 93190x3-6H | | | | | | |
| M 218 | 2 | 93218x2-6H | 93218x2-6G | M 60 | 3 | 93060x3-6H | 93060x3-6G | M 195 | 3 | 93195x3-6H | 93195x3-6H | | | | | | |
| M 220 | 2 | 93220x2-6H | 93220x2-6G | M 62 | 3 | 93062x3-6H | 93062x3-6G | M 200 | 3 | 93200x3-6H | 93200x3-6H | | | | | | |
| M 222 | 2 | 93222x2-6H | 93222x2-6G | M 64 | 3 | 93064x3-6H | 93064x3-6G | M 205 | 3 | 93205x3-6H | 93205x3-6H | | | | | | |
| M 225 | 2 | 93225x2-6H | 93225x2-6G | M 65 | 3 | 93065x3-6H | 93065x3-6G | M 210 | 3 | 93210x3-6H | 93210x3-6H | | | | | | |
| M 228 | 2 | 93228x2-6H | 93228x2-6G | M 68 | 3 | 93068x3-6H | 93068x3-6G | M 215 | 3 | 93215x3-6H | 93215x3-6H | | | | | | |
| M 230 | 2 | 93230x2-6H | 93230x2-6G | M 70 | 3 | 93070x3-6H | 93070x3-6G | M 220 | 3 | 93220x3-6H | 93220x3-6H | | | | | | |
| M 232 | 2 | 93232x2-6H | 93232x2-6G | M 72 | 3 | 93072x3-6H | 93072x3-6G | M 225 | 3 | 93225x3-6H | 93225x3-6H | | | | | | |
| M 235 | 2 | 93235x2-6H | 93235x2-6G | M 74 | 3 | 93074x3-6H | 93074x3-6G | M 230 | 3 | 93230x3-6H | 93230x3-6H | | | | | | |
| M 238 | 2 | 93238x2-6H | 93238x2-6G | M 76 | 3 | 93076x3-6H | 93076x3-6G | M 235 | 3 | 93235x3-6H | 93235x3-6H | | | | | | |
| M 240 | 2 | 93240x2-6H | 93240x2-6G | M 80 | 3 | 93080x3-6H | 93080x3-6G | M 240 | 3 | 93240x3-6H | 93240x3-6H | | | | | | |
| M 242 | 2 | 93242x2-6H | 93242x2-6G | M 85 | 3 | 93085x3-6H | 93085x3-6G | M 245 | 3 | 93245x3-6H | 93245x3-6H | | | | | | |
| M 245 | 2 | 93245x2-6H | 93245x2-6G | M 90 | 3 | 93090x3-6H | 93090x3-6G | M 250 | 3 | 93250x3-6H | 93250x3-6H | | | | | | |
| M 248 | 2 | 93248x2-6H | 93248x2-6G | M 95 | 3 | 93095x3-6H | 93095x3-6G | M 30 | 3,5 | 93030-6H | 93030-6G | | | | | | |
| M 250 | 2 | 93250x2-6H | 93250x2-6G | M 100 | 3 | 93100x3-6H | 93100x3-6G | M 33 | 3,5 | 93033-6H | 93033-6G | | | | | | |
| M 18 | 2,5 | 93018-6H | 93018-6G | M 105 | 3 | 93105x3-6H | 93105x3-6G | M 36 | 4 | 93036-6H | 93036-6G | | | | | | |
| M 20 | 2,5 | 93020-6H | 93020-6G | M 110 | 3 | 93110x3-6H | 93110x3-6G | M 39 | 4 | 93039-6H | 93039-6G | | | | | | |

Kalibry | Kalibre | Sprawdziany

METRICKÝ ZÁVIT - nestandardní stoupání
 METRICKÝ ZÁVIT - neštandardné stúpanie
 GWINT METRYCZNY - niestandardowy skok gwintu

DIN
13



Na objednávku dodáme i v provedení s levým závitem.
 Na objednávku dodáme aj v provedení s ľavým závitom.
 Na życzenie dostarczamy również wersję z lewym gwintem.

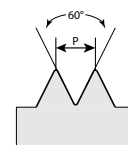
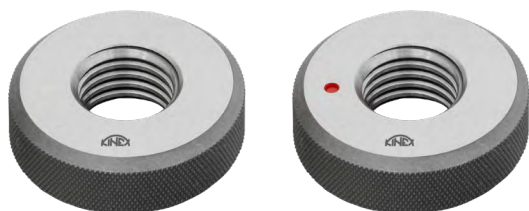
NESTANDARDNÍ STOUPÁNÍ
NEŠTANDARDNÉ STÚPANIE
NIESTANDARDOWY SKOK GWINTU

| 6H | | | 6G | | | 6H | | | 6G | | | 6H | | | 6G | | | | |
|-------|--------|------------|------------|-------------|------------|-----------------|------------|-------|--------|------------|------------|----|--------|------|------|---|--------|------|------|
| | | | | | | | | | | | | | | | | | | | |
| d | P [mm] | code | code | d | P [mm] | code | code | d | P [mm] | code | code | d | P [mm] | code | code | d | P [mm] | code | code |
| M 52 | 4 | 93052x4-6H | 93052x4-6G | M 175 | 4 | 93175x4-6H | 93175x4-6G | M 105 | 6 | 93105x6-6H | 93105x6-6G | | | | | | | | |
| M 55 | 4 | 93055x4-6H | 93055x4-6G | M 180 | 4 | 93180x4-6H | 93180x4-6G | M 110 | 6 | 93110x6-6H | 93110x6-6G | | | | | | | | |
| M 56 | 4 | 93056x4-6H | 93056x4-6G | M 185 | 4 | 93185x4-6H | 93185x4-6G | M 115 | 6 | 93115x6-6H | 93115x6-6G | | | | | | | | |
| M 58 | 4 | 93058x4-6H | 93058x4-6G | M 190 | 4 | 93190x4-6H | 93190x4-6G | M 120 | 6 | 93120x6-6H | 93120x6-6G | | | | | | | | |
| M 60 | 4 | 93060x4-6H | 93060x4-6G | M 195 | 4 | 93195x4-6H | 93195x4-6G | M 125 | 6 | 93125x6-6H | 93125x6-6G | | | | | | | | |
| M 62 | 4 | 93062x4-6H | 93062x4-6G | M 200 | 4 | 93200x4-6H | 93200x4-6G | M 130 | 6 | 93130x6-6H | 93130x6-6G | | | | | | | | |
| M 64 | 4 | 93064x4-6H | 93064x4-6G | M 205 | 4 | 93205x4-6H | 93205x4-6G | M 135 | 6 | 93135x6-6H | 93135x6-6G | | | | | | | | |
| M 65 | 4 | 93065x4-6H | 93065x4-6G | M 210 | 4 | 93210x4-6H | 93210x4-6G | M 140 | 6 | 93140x6-6H | 93140x6-6G | | | | | | | | |
| M 68 | 4 | 93068x4-6H | 93068x4-6G | M 215 | 4 | 93215x4-6H | 93215x4-6G | M 145 | 6 | 93145x6-6H | 93145x6-6G | | | | | | | | |
| M 70 | 4 | 93070x4-6H | 93070x4-6G | M 220 | 4 | 93220x4-6H | 93220x4-6G | M 150 | 6 | 93150x6-6H | 93150x6-6G | | | | | | | | |
| M 72 | 4 | 93072x4-6H | 93072x4-6G | M 225 | 4 | 93225x4-6H | 93225x4-6G | M 155 | 6 | 93155x6-6H | 93155x6-6G | | | | | | | | |
| M 75 | 4 | 93075x4-6H | 93075x4-6G | M 230 | 4 | 93230x4-6H | 93230x4-6G | M 160 | 6 | 93160x6-6H | 93160x6-6G | | | | | | | | |
| M 76 | 4 | 93076x4-6H | 93076x4-6G | M 235 | 4 | 93235x4-6H | 93235x4-6G | M 165 | 6 | 93165x6-6H | 93165x6-6G | | | | | | | | |
| M 80 | 4 | 93080x4-6H | 93080x4-6G | M 240 | 4 | 93240x4-6H | 93240x4-6G | M 170 | 6 | 93170x6-6H | 93170x6-6G | | | | | | | | |
| M 85 | 4 | 93085x4-6H | 93085x4-6G | M 245 | 4 | 93245x4-6H | 93245x4-6G | M 175 | 6 | 93175x6-6H | 93175x6-6G | | | | | | | | |
| M 90 | 4 | 93090x4-6H | 93090x4-6G | M 250 | 4 | 93250x4-6H | 93250x4-6G | M 180 | 6 | 93180x6-6H | 93180x6-6G | | | | | | | | |
| M 95 | 4 | 93095x4-6H | 93095x4-6G | M 42 | 4,5 | 93042-6H | 93042-6G | M 185 | 6 | 93185x6-6H | 93185x6-6G | | | | | | | | |
| M 100 | 4 | 93100x4-6H | 93100x4-6G | M 45 | 4,5 | 93045-6H | 93045-6G | M 190 | 6 | 93190x6-6H | 93190x6-6G | | | | | | | | |
| M 105 | 4 | 93105x4-6H | 93105x4-6G | M 48 | 5 | 93048-6H | 93048-6G | M 195 | 6 | 93195x6-6H | 93195x6-6G | | | | | | | | |
| M 110 | 4 | 93110x4-6H | 93110x4-6G | M 52 | 5 | 93052-6H | 93052-6G | M 200 | 6 | 93200x6-6H | 93200x6-6G | | | | | | | | |
| M 115 | 4 | 93115x4-6H | 93115x4-6G | M 56 | 5,5 | 93056-6H | 93056-6G | M 205 | 6 | 93205x6-6H | 93205x6-6G | | | | | | | | |
| M 120 | 4 | 93120x4-6H | 93120x4-6G | M 60 | 5,5 | 93060-6H | 93060-6G | M 210 | 6 | 93210x6-6H | 93210x6-6G | | | | | | | | |
| M 125 | 4 | 93125x4-6H | 93125x4-6G | M 64 | 6 | 93064-6H | 93064-6G | M 215 | 6 | 93215x6-6H | 93215x6-6G | | | | | | | | |
| M 130 | 4 | 93130x4-6H | 93130x4-6G | M 68 | 6 | 93068-6H | 93068-6G | M 220 | 6 | 93220x6-6H | 93220x6-6G | | | | | | | | |
| M 135 | 4 | 93135x4-6H | 93135x4-6G | M 70 | 6 | 93070x6-6H | 93070x6-6G | M 225 | 6 | 93225x6-6H | 93225x6-6G | | | | | | | | |
| M 140 | 4 | 93140x4-6H | 93140x4-6G | M 72 | 6 | 93072x6-6H | 93072x6-6G | M 230 | 6 | 93230x6-6H | 93230x6-6G | | | | | | | | |
| M 145 | 4 | 93145x4-6H | 93145x4-6G | M 76 | 6 | 93076x6-6H | 93076x6-6G | M 235 | 6 | 93235x6-6H | 93235x6-6G | | | | | | | | |
| M 150 | 4 | 93150x4-6H | 93150x4-6G | M 80 | 6 | 93080x6-6H | 93080x6-6G | M 240 | 6 | 93240x6-6H | 93240x6-6G | | | | | | | | |
| M 155 | 4 | 93155x4-6H | 93155x4-6G | M 85 | 6 | 93085x6-6H | 93085x6-6G | M 245 | 6 | 93245x6-6H | 93245x6-6G | | | | | | | | |
| M 160 | 4 | 93160x4-6H | 93160x4-6G | M 90 | 6 | 93090x6-6H | 93090x6-6G | M 250 | 6 | 93250x6-6H | 93250x6-6G | | | | | | | | |
| M 165 | 4 | 93165x4-6H | 93165x4-6G | M 95 | 6 | 93095x6-6H | 93095x6-6G | | | | | | | | | | | | |
| M 170 | 4 | 93170x4-6H | 93170x4-6G | M 100 | 6 | 93100x6-6H | 93100x6-6G | | | | | | | | | | | | |

Kalibry | Kalibre | Sprawdziany

METRICKÝ ZÁVIT - standardní stoupání
 METRICKÝ ZÁVIT - štandardné stúpanie
 GWINT METRYCZNY - standardowy skok gwintu

DIN
13



Na objednávku dodáme i v provedení s levým závitem.
 Na objednávku dodáme aj v provedení s ľavým závitom.
 Na życzenie dostarczamy również wersję z lewym gwintem.

STANDARDNÍ STOUPÁNÍ
ŠTANDARDNÉ STÚPANIE
STANDARDOWY SKOK GWINTU

6g Go **6g NoGo** **6h Go** **6h NoGo**

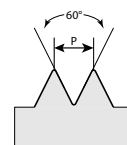
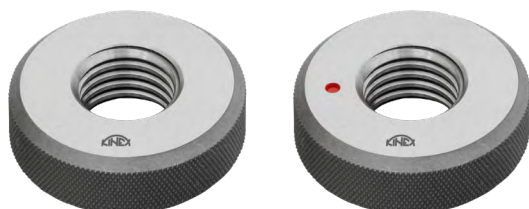


| | d | P [mm] | code | code | | |
|---|-----|--------|-------------|-------------|-------------|-------------|
| M | 1 | 0,25 | | | 94001-6hD | 94001-6hZ |
| M | 1,1 | 0,25 | | | 94001,1-6hD | 94001,1-6hZ |
| M | 1,2 | 0,25 | | | 94001,2-6hD | 94001,2-6hZ |
| M | 1,4 | 0,3 | | | 94001,4-6hD | 94001,4-6hZ |
| M | 1,6 | 0,35 | 94001,6-6gD | 94001,6-6gZ | 94001,6-6hD | 94001,6-6hZ |
| M | 1,7 | 0,35 | 94001,7-6gD | 94001,7-6gZ | | |
| M | 1,8 | 0,35 | 94001,8-6gD | 94001,8-6gZ | 94001,8-6hD | 94001,8-6hZ |
| M | 2 | 0,4 | 94002-6gD | 94002-6gZ | 94002-6hD | 94002-6hZ |
| M | 2,2 | 0,45 | 94002,2-6gD | 94002,2-6gZ | 94002,2-6hD | 94002,2-6hZ |
| M | 2,3 | 0,4 | 94002,3-6gD | 94002,3-6gZ | | |
| M | 2,5 | 0,45 | 94002,5-6gD | 94002,5-6gZ | 94002,5-6hD | 94002,5-6hZ |
| M | 2,6 | 0,45 | 94002,6-6gD | 94002,6-6gZ | 94002,6-6hD | 94002,6-6hZ |
| M | 3 | 0,5 | 94003-6gD | 94003-6gZ | 94003-6hD | 94003-6hZ |
| M | 3,5 | 0,6 | 94003,5-6gD | 94003,5-6gZ | 94003,5-6hD | 94003,5-6hZ |
| M | 4 | 0,7 | 94004-6gD | 94004-6gZ | 94004-6hD | 94004-6hZ |
| M | 4,5 | 0,75 | 94004,5-6gD | 94004,5-6gZ | 94004,5-6hD | 94004,5-6hZ |
| M | 5 | 0,8 | 94005-6gD | 94005-6gZ | 94005-6hD | 94005-6hZ |
| M | 6 | 1 | 94006-6gD | 94006-6gZ | 94006-6hD | 94006-6hZ |
| M | 7 | 1 | 94007-6gD | 94007-6gZ | 94007-6hD | 94007-6hZ |
| M | 8 | 1,25 | 94008-6gD | 94008-6gZ | 94008-6hD | 94008-6hZ |
| M | 9 | 1,25 | 94009-6gD | 94009-6gZ | 94009-6hD | 94009-6hZ |
| M | 10 | 1,5 | 94010-6gD | 94010-6gZ | 94010-6hD | 94010-6hZ |

Kalibry | Kalibre | Sprawdziany

METRICKÝ ZÁVIT - standardní stoupání
 METRICKÝ ZÁVIT - štandardné stúpanie
 GWINT METRYCZNY - standardowy skok gwintu

DIN
13



Na objednávku dodáme i v provedení s levým závitem.
 Na objednávku dodáme aj v provedení s ľavým závitom.
 Na życzenie dostarczamy również wersję z lewym gwintem.

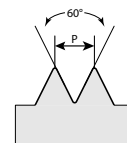
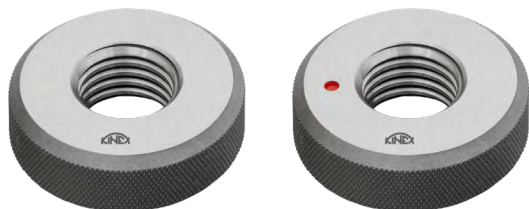
STANDARDNÍ STOUPÁNÍ
ŠTANDARDNÉ STÚPANIE
STANDARDOWY SKOK GWINTU

| | | 6g Go | 6g NoGo | 6h Go | 6h NoGo |
|------|--------|-----------|-----------|-----------|-----------|
| | | | | | |
| d | P [mm] | code | code | code | code |
| M 11 | 1,5 | 94011-6gD | 94011-6gZ | 94011-6hD | 94011-6hZ |
| M 12 | 1,75 | 94012-6gD | 94012-6gZ | 94012-6hD | 94012-6hZ |
| M 14 | 2 | 94014-6gD | 94014-6gZ | 94014-6hD | 94014-6hZ |
| M 16 | 2 | 94016-6gD | 94016-6gZ | 94016-6hD | 94016-6hZ |
| M 18 | 2,5 | 94018-6gD | 94018-6gZ | 94018-6hD | 94018-6hZ |
| M 20 | 2,5 | 94020-6gD | 94020-6gZ | 94020-6hD | 94020-6hZ |
| M 22 | 2,5 | 94022-6gD | 94022-6gZ | 94022-6hD | 94022-6hZ |
| M 24 | 3 | 94024-6gD | 94024-6gZ | 94024-6hD | 94024-6hZ |
| M 27 | 3 | 94027-6gD | 94027-6gZ | 94027-6hD | 94027-6hZ |
| M 30 | 3,5 | 94030-6gD | 94030-6gZ | 94030-6hD | 94030-6hZ |
| M 33 | 3,5 | 94033-6gD | 94033-6gZ | 94033-6hD | 94033-6hZ |
| M 36 | 4 | 94036-6gD | 94036-6gZ | 94036-6hD | 94036-6hZ |
| M 39 | 4 | 94039-6gD | 94039-6gZ | 94039-6hD | 94039-6hZ |
| M 42 | 4,5 | 94042-6gD | 94042-6gZ | 94042-6hD | 94042-6hZ |
| M 45 | 4,5 | 94045-6gD | 94045-6gZ | 94045-6hD | 94045-6hZ |
| M 48 | 5 | 94048-6gD | 94048-6gZ | 94048-6hD | 94048-6hZ |
| M 52 | 5 | 94052-6gD | 94052-6gZ | 94052-6hD | 94052-6hZ |
| M 56 | 5,5 | 94056-6gD | 94056-6gZ | | |
| M 60 | 5,5 | 94060-6gD | 94060-6gZ | | |
| M 64 | 6 | 94064-6gD | 94064-6gZ | | |
| M 68 | 6 | 94068-6gD | 94068-6gZ | | |

Kalibry | Kalibre | Sprawdziany

METRICKÝ ZÁVIT - nestandardní stoupání
 METRICKÝ ZÁVIT - neštandardné stúpanie
 GWINT METRYCZNY - niestandardowy skok gwintu

DIN
13



Na objednávku dodáme i v provedení s levým závitem.
 Na objednávku dodáme aj v prevedení s ľavým závitem.
 Na życzenie dostarczamy również wersję z lewym gwintem.

NESTANDARDNÍ STROUPÁNÍ
NEŠTANDARDNÉ STÚPANIE
NIESTANDARDOWY SKOK GWINTU

| 6g Go | 6g NoGo | 6h Go | 6h NoGo |
|-------|---------|-------|---------|
|-------|---------|-------|---------|

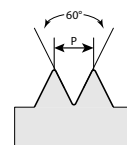
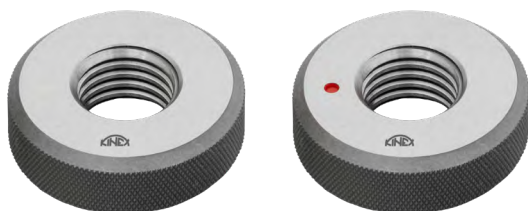


| | d | P [mm] | code | code | code | code |
|----|-----|--------|--------------|--------------|--------------|--------------|
| M | 1 | 0,2 | | | 94001x02-6hD | 94001x02-6hZ |
| M | 1,2 | 0,2 | | | 94001,2x02hD | 94001,2x02hZ |
| Mi | 1,4 | 0,2 | | | 94001,4x02hD | 94001,4x02hZ |
| M | 1,6 | 0,2 | 94001,6x02gD | 94001,6x02gZ | 94001,6x02hD | 94001,6x02hZ |
| M | 1,8 | 0,2 | 94001,8x02gD | 94001,8x02gZ | 94001,8x02hD | 94001,8x02hZ |
| M | 2 | 0,2 | 94002x02-6gD | 94002x02-6gZ | 94002x02-6hD | 94002x02-6hZ |
| M | 2,2 | 0,2 | 94002,2x02gD | 94002,2x02gZ | 94002,2x02hD | 94002,2x02hZ |
| M | 2,5 | 0,2 | 94002,5x02gD | 94002,5x02gZ | 94002,5x02hD | 94002,5x02hZ |
| M | 3 | 0,2 | 94003x02-6gD | 94003x02-6gZ | 94003x02-6hD | 94003x02-6hZ |
| M | 3,5 | 0,2 | 94003,5x02gD | 94003,5x02gZ | 94003,5x02hD | 94003,5x02hZ |
| M | 4 | 0,2 | 94004x02-6gD | 94004x02-6gZ | 94004x02-6hD | 94004x02-6hZ |
| M | 4,5 | 0,2 | 94004,5x02gD | 94004,5x02gZ | 94004,5x02hD | 94004,5x02hZ |
| M | 5 | 0,2 | 94005x02-6gD | 94005x02-6gZ | 94005x02-6hD | 94005x02-6hZ |
| M | 6 | 0,2 | 94006x02-6gD | 94006x02-6gZ | 94006x02-6hD | 94006x02-6hZ |
| M | 1 | 0,25 | | | 94001-6hD | 94001-6hZ |
| M | 1,1 | 0,25 | | | 94001,1-6hD | 94001,1-6hZ |
| M | 1,2 | 0,25 | | | 94001,2-6hD | 94001,2-6hZ |
| M | 1,4 | 0,25 | | | 94001,4x25hD | 94001,4x25hZ |
| M | 1,6 | 0,25 | 94001,6x25gD | 94001,6x25gZ | 94001,6x25hD | 94001,6x25hZ |
| M | 1,8 | 0,25 | 94001,8x25gD | 94001,8x25gZ | 94001,8x25hD | 94001,8x25hZ |
| M | 2 | 0,25 | 94002x25-6gD | 94002x25-6gZ | 94002x25-6hD | 94002x25-6hZ |
| Mi | 2,2 | 0,25 | 94002,2x25gD | 94002,2x25gZ | 94002,2x25hD | 94002,2x25hZ |
| M | 2,5 | 0,25 | 94002,5x25gD | 94002,5x25gZ | 94002,5x25hD | 94002,5x25hZ |
| M | 3 | 0,25 | 94003x25-6gD | 94003x25-6gZ | 94003x25-6hD | 94003x25-6hZ |
| M | 3,5 | 0,25 | 94003,5x25gD | 94003,5x25gZ | 94003,5x25hD | 94003,5x25hZ |
| M | 4 | 0,25 | 94004x25-6gD | 94004x25-6gZ | 94004x25-6hD | 94004x25-6hZ |
| M | 5 | 0,25 | 94005x25-6gD | 94005x25-6gZ | 94005x25-6hD | 94005x25-6hZ |
| M | 6 | 0,25 | 94006x25-6gD | 94006x25-6gZ | 94006x25-6hD | 94006x25-6hZ |
| M | 1,4 | 0,3 | | | 94001,4-6hD | 94001,4-6hZ |
| M | 1,6 | 0,35 | 94001,6-6gD | 94001,6-6gZ | 94001,6-6hD | 94001,6-6hZ |

Kalibry | Kalibre | Sprawdziany

METRICKÝ ZÁVIT - nestandardní stoupání
 METRICKÝ ZÁVIT - neštandardné stúpanie
 GWINT METRYCZNY - niestandardowy skok gwintu

DIN
13



Na objednávku dodáme i v provedení s levým závitem.
 Na objednávku dodáme aj v prevedení s ľavým závitom.
 Na życzenie dostarczamy również wersję z lewym gwintem.

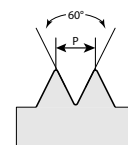
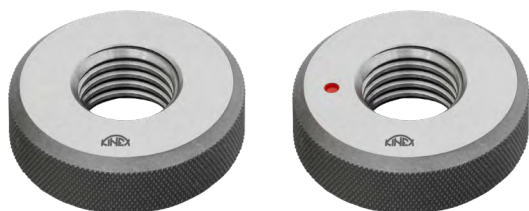
NESTANDARDNÍ STROUPÁNÍ
NEŠTANDARDNÉ STÚPANIE
NIESTANDARDOWY SKOK GWINTU

| | | 6g Go | 6g NoGo | 6h Go | 6h NoGo |
|--------------|-------------|--------------------|--------------------|--------------|--------------|
| | | | | | |
| | d P [mm] | code | code | code | code |
| M 1,7 | 0,35 | 94001,7-6gD | 94001,7-6gZ | | |
| M 1,8 | 0,35 | 94001,8-6gD | 94001,8-6gZ | 94001,8-6hD | 94001,8-6hZ |
| M 2 | 0,35 | 94002x35-6gD | 94002x35-6gZ | | |
| M 2,2 | 0,35 | 94002,2x35gD | 94002,2x35gZ | | |
| M 2,5 | 0,35 | 94002,5x35gD | 94002,5x35gZ | 94002,5x35hD | 94002,5x35hZ |
| M 3 | 0,35 | 94003x35-6gD | 94003x35-6gZ | 94003x35-6hD | 94003x35-6hZ |
| M 3,5 | 0,35 | 94003,5x35gD | 94003,5x35gZ | 94003,5x35hD | 94003,5x35hZ |
| M 4 | 0,35 | 94004x35-6gD | 94004x35-6gZ | 94004x35-6hD | 94004x35-6hZ |
| M 4,5 | 0,35 | 94004,5x35gD | 94004,5x35gZ | | |
| M 5 | 0,35 | 94005x35-6gD | 94005x35-6gZ | | |
| M 5,5 | 0,35 | 94005,5x35gD | 94005,5x35gZ | | |
| M 6 | 0,35 | 94006x35-6gD | 94006x35-6gZ | | |
| M 6,5 | 0,35 | 94006,5x35gD | 94006,5x35gZ | | |
| M 7 | 0,35 | 94007x35-6gD | 94007x35-6gZ | | |
| M 7,5 | 0,35 | 94007,5x35gD | 94007,5x35gZ | | |
| M 8 | 0,35 | 94008x35-6gD | 94008x35-6gZ | | |
| M 9 | 0,35 | 94009x35-6gD | 94009x35-6gZ | | |
| M 9,5 | 0,35 | 94009,5x35gD | 94009,5x35gZ | | |
| M 10 | 0,35 | 94010x35-6gD | 94010x35-6gZ | | |
| M 2 | 0,4 | 94002-6gD | 94002-6gZ | 94002-6hD | 94002-6hZ |
| M 2,3 | 0,4 | 94002,3-6gD | 94002,3-6gZ | | |
| M 2,2 | 0,45 | 94002,2-6gD | 94002,2-6gZ | 94002,2-6hD | 94002,2-6hZ |
| M 2,5 | 0,45 | 94002,5-6gD | 94002,5-6gZ | 94002,5-6hD | 94002,5-6hZ |
| M 2,6 | 0,45 | 94002,6-6gD | 94002,6-6gZ | | |
| M 3 | 0,5 | 94003-6gD | 94003-6gZ | 94003-6hD | 94003-6hZ |
| M 3,5 | 0,5 | 94003,5x05gD | 94003,5x05gZ | 94003,5x05hD | 94003,5x05hD |
| M 4 | 0,5 | 94004x05-6gD | 94004x05-6gZ | 94004x,5-6hD | 94004x05-6hD |
| M 4,5 | 0,5 | 94004,5x05gD | 94004,5x05gZ | 94004,5x05hD | 94004,5x05hD |
| M 5 | 0,5 | 94005x05-6gD | 94005x05-6gZ | 94005x05-6hD | 94005x05-6hD |
| M 5,5 | 0,5 | 94005,5x05gD | 94005,5x05gZ | | |

Kalibry | Kalibre | Sprawdziany

METRICKÝ ZÁVIT - nestandardní stoupání
 METRICKÝ ZÁVIT - neštandardné stúpanie
 GWINT METRYCZNY - niestandardowy skok gwintu

DIN
13



Na objednávku dodáme i v provedení s levým závitem.
 Na objednávku dodáme aj v prevedení s ľavým závitom.
 Na życzenie dostarczamy również wersję z lewym gwintem.

NESTANDARDNÍ STROUPÁNÍ
NEŠTANDARDNÉ STÚPANIE
NIESTANDARDOWY SKOK GWINTU

6g Go

6g NoGo

6h Go

6h NoGo

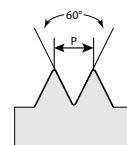
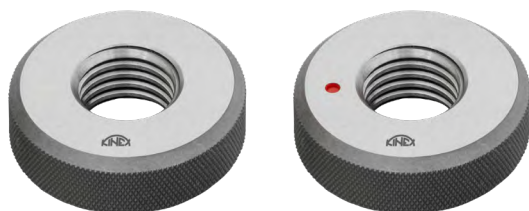


| | d | P [mm] | code | code | code | code |
|-------|-----|--------|--------------|--------------|--------------|--------------|
| M 6 | 6 | 0,5 | 94006x05-6gD | 94006x05-6gZ | 94006x05-6hD | 94006x05-6hZ |
| M 6,5 | 6,5 | 0,5 | 94006,5x05gD | 94006,5x05gZ | | |
| M 7 | 7 | 0,5 | 94007x05-6gD | 94007x05-6gZ | 94007x05-6hD | 94007x05-6hZ |
| M 7,5 | 7,5 | 0,5 | 94007,5x05gD | 94007,5x05gZ | | |
| M 8 | 8 | 0,5 | 94008x05-6gD | 94008x05-6gZ | 94008x05-6hD | 94008x05-6hZ |
| M 8,5 | 8,5 | 0,5 | 94008,5x05gD | 94008,5x05gZ | | |
| M 9 | 9 | 0,5 | 94009x05-6gD | 94009x05-6gZ | 94009x05-6hD | 94009x05-6hZ |
| M 10 | 10 | 0,5 | 94010x05-6gD | 94010x05-6gZ | 94010x05-6hD | 94010x05-6hZ |
| M 11 | 11 | 0,5 | 90011x05-6gD | 94011x05-6gZ | 94011x05-6hD | 94011x05-6hZ |
| M 12 | 12 | 0,5 | 94012x05-6gD | 94012x05-6gZ | 94012x05-6hD | 94012x05-6hZ |
| M 13 | 13 | 0,5 | 94013x05-6gD | 94013x05-6gZ | 94013x05-6hD | 94013x05-6hZ |
| M 14 | 14 | 0,5 | 94014x05-6gD | 94014x05-6gZ | 94014x05-6hD | 94014x05-6hZ |
| M 15 | 15 | 0,5 | 94015x05-6gD | 94015x05-6gZ | 94015x05-6hD | 94015x05-6hZ |
| M 16 | 16 | 0,5 | 94016x05-6gD | 94016x05-6gZ | 94016x05-6hD | 94016x05-6hZ |
| M 17 | 17 | 0,5 | 94017x05-6gD | 94017x05-6gZ | 94017x05-6hD | 94017x05-6hZ |
| M 18 | 18 | 0,5 | 94018x05-6gD | 94018x05-6gZ | 94018x05-6hD | 94018x05-6hZ |
| M 19 | 19 | 0,5 | 94019x05-6gD | 94019x05-6gZ | 94019x05-6hD | 94019x05-6hZ |
| M 20 | 20 | 0,5 | 94020x05-6gD | 94020x05-6gZ | 94020x05-6hD | 94020x05-6hZ |
| M 21 | 21 | 0,5 | 94021x05-6gD | 94021x05-6gZ | | |
| M 22 | 22 | 0,5 | 94022x05-6gD | 94022x05-6gZ | | |
| M 23 | 23 | 0,5 | 94023x05-6gD | 94023x05-6gZ | | |
| M 24 | 24 | 0,5 | 94024x05-6gD | 94024x05-6gZ | | |
| M 25 | 25 | 0,5 | 94025x05-6gD | 94025x05-6gZ | | |
| M 26 | 26 | 0,5 | 94026x05-6gD | 94026x05-6gZ | | |
| M 27 | 27 | 0,5 | 94027x05-6gD | 94027x05-6gZ | | |
| M 28 | 28 | 0,5 | 94028x05-6gD | 94028x05-6gZ | | |
| M 29 | 29 | 0,5 | 94029x05-6gD | 94029x05-6gZ | | |
| M 30 | 30 | 0,5 | 94030x05-6gD | 94030x05-6gZ | | |
| M 31 | 31 | 0,5 | 94031x05-6gD | 94031x05-6gZ | | |
| M 32 | 32 | 0,5 | 94032x05-6gD | 94032x05-6gZ | | |

Kalibry | Kalibre | Sprawdziany

METRICKÝ ZÁVIT - nestandardní stoupání
 METRICKÝ ZÁVIT - neštandardné stúpanie
 GWINT METRYCZNY - niestandardowy skok gwintu

DIN
13



Na objednávku dodáme i v provedení s levým závitem.
 Na objednávku dodáme aj v prevedení s ľavým závitom.
 Na życzenie dostarczamy również wersję z lewym gwintem.

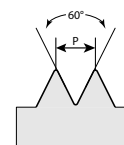
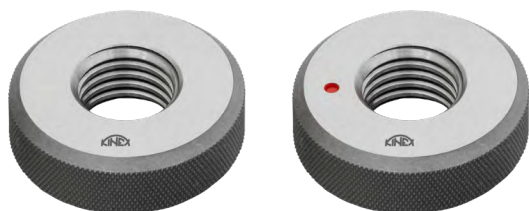
NESTANDARDNÍ STROUPÁNÍ
NEŠTANDARDNÉ STÚPANIE
NIESTANDARDOWY SKOK GWINTU

| | | 6g Go | 6g NoGo | 6h Go | 6h NoGo |
|--------------|-------------|--------------------|--------------------|--------------|--------------|
| | | | | | |
| d | P [mm] | code | code | code | code |
| M 33 | 0,5 | 94033x05-6gD | 94033x05-6gZ | | |
| M 34 | 0,5 | 94034x05-6gD | 94034x05-6gZ | | |
| M 35 | 0,5 | 94035x05-6gD | 94035x05-6gZ | | |
| M 36 | 0,5 | 94036x05-6gD | 94036x05-6gZ | | |
| M 37 | 0,5 | 94037x05-6gD | 94037x05-6gZ | | |
| M 38 | 0,5 | 94038x05-6gD | 94038x05-6gZ | | |
| M 39 | 0,5 | 94039x05-6gD | 94039x05-6gZ | | |
| M 40 | 0,5 | 94040x05-6gD | 94040x05-6gZ | | |
| M 3,5 | 0,6 | 94003,5-6gD | 94003,5-6gZ | 94003,5-6hD | 94003,5-6hZ |
| M 4 | 0,7 | 94004-6gD | 94004-6gZ | 94004-6hD | 94004-6hZ |
| M 4,5 | 0,75 | 94004,5-6gD | 94004,5-6gZ | 94004,5-6hD | 94004,5-6hZ |
| M 5 | 0,75 | 94005x75-6gD | 94005x75-6gZ | 94005x75-6hD | 94005x75-6hZ |
| M 6 | 0,75 | 94006x75-6gD | 94006x75-6gZ | 94006x75-6hD | 94006x75-6hZ |
| M 7 | 0,75 | 94007x75-6gD | 94007x75-6gZ | 94007x75-6hD | 94007x75-6hZ |
| M 8 | 0,75 | 94008x75-6gD | 94008x75-6gZ | 94008x75-6hD | 94008x75-6hZ |
| M 9 | 0,75 | 94009x75-6gD | 94009x75-6gZ | 94009x75-6hD | 94009x75-6hZ |
| M 10 | 0,75 | 94010x75-6gD | 94010x75-6gZ | 94010x75-6hD | 94010x75-6hZ |
| M 11 | 0,75 | 94011x75-6gD | 94011x75-6gZ | 94011x75-6hD | 94011x75-6hZ |
| M 12 | 0,75 | 94012x75-6gD | 94012x75-6gZ | 94012x75-6hD | 94012x75-6hZ |
| M 13 | 0,75 | 94013x75-6gD | 94013x75-6gZ | 94013x75-6hD | 94013x75-6hZ |
| M 14 | 0,75 | 94014x75-6gD | 94014x75-6gZ | 94014x75-6hD | 94014x75-6hZ |
| M 15 | 0,75 | 94015x75-6gD | 94015x75-6gZ | 94015x75-6hD | 94015x75-6hZ |
| M 16 | 0,75 | 94016x75-6gD | 94016x75-6gZ | 94016x75-6hD | 94016x75-6hZ |
| M 17 | 0,75 | 94017x75-6gD | 94017x75-6gZ | 94017x75-6hD | 94017x75-6hZ |
| M 18 | 0,75 | 94018x75-6gD | 94018x75-6gZ | 94018x75-6hD | 94018x75-6hZ |
| M 19 | 0,75 | 94019x75-6gD | 94019x75-6gZ | 94019x75-6hD | 94019x75-6hZ |
| M 20 | 0,75 | 94020x75-6gD | 94020x75-6gZ | 94020x75-6hD | 94020x75-6hZ |
| M 21 | 0,75 | 94021x75-6gD | 94021x75-6gZ | | |
| M 22 | 0,75 | 94022x75-6gD | 94022x75-6gZ | 94022x75-6hD | 94022x75-6hZ |
| M 23 | 0,75 | 94023x75-6gD | 94023x75-6gZ | 94023x75-6hD | 94023x75-6hZ |

Kalibry | Kalibre | Sprawdziany

METRICKÝ ZÁVIT - nestandardní stoupání
 METRICKÝ ZÁVIT - neštandardné stúpanie
 GWINT METRYCZNY - niestandardowy skok gwintu

DIN
13



Na objednávku dodáme i v provedení s levým závitem.
 Na objednávku dodáme aj v prevedení s ľavým závitem.
 Na życzenie dostarczamy również wersję z lewym gwintem.

NESTANDARDNÍ STROUPÁNÍ
NEŠTANDARDNÉ STÚPANIE
NIESTANDARDOWY SKOK GWINTU

6g Go

6g NoGo

6h Go

6h NoGo

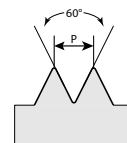
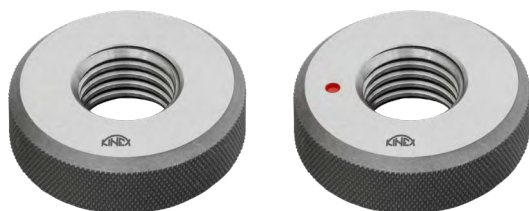


| | d | P [mm] | code | code | code | code |
|------------|----------|------------|------------------|------------------|--------------|--------------|
| M 24 | 24 | 0,75 | 94024x75-6gD | 94024x75-6gZ | 94024x75-6hD | 94024x75-6hZ |
| M 25 | 25 | 0,75 | 94025x75-6gD | 94025x75-6gZ | 94025x75-6hD | 94025x75-6hZ |
| M 26 | 26 | 0,75 | 94026x75-6gD | 94026x75-6gZ | 94026x75-6hD | 94026x75-6hZ |
| M 27 | 27 | 0,75 | 94027x75-6gD | 94027x75-6gZ | | |
| M 28 | 28 | 0,75 | 94028x75-6gD | 94028x75-6gZ | | |
| M 29 | 29 | 0,75 | 94029x75-6gD | 94029x75-6gZ | | |
| M 30 | 30 | 0,75 | 94030x75-6gD | 94030x75-6gZ | 94030x75-6hD | 94030x75-6hZ |
| M 31 | 31 | 0,75 | 94031x75-6gD | 94031x75-6gZ | | |
| M 32 | 32 | 0,75 | 94032x75-6gD | 94032x75-6gZ | | |
| M 33 | 33 | 0,75 | 94033x75-6gD | 94033x75-6gZ | | |
| M 34 | 34 | 0,75 | 94034x75-6gD | 94034x75-6gZ | | |
| M 35 | 35 | 0,75 | 94035x75-6gD | 94035x75-6gZ | | |
| M 36 | 36 | 0,75 | 94036x75-6gD | 94036x75-6gZ | | |
| M 37 | 37 | 0,75 | 94037x75-6gD | 94037x75-6gZ | | |
| M 38 | 38 | 0,75 | 94038x75-6gD | 94038x75-6gZ | | |
| M 39 | 39 | 0,75 | 94039x75-6gD | 94039x75-6gZ | | |
| M 40 | 40 | 0,75 | 94040x75-6gD | 94040x75-6gZ | | |
| M 5 | 5 | 0,8 | 94005-6gD | 94005-6gZ | 94005-6hD | 94005-6hZ |
| M 6 | 6 | 1 | 94006-6gD | 94006-6gZ | 94006-6hD | 94006-6hZ |
| M 7 | 7 | 1 | 94007-6gD | 94007-6gZ | 94007-6hD | 94007-6hZ |
| M 8 | 8 | 1 | 94008x1-6gD | 94008x1-6gZ | 94008x1-6hD | 94008x1-6hZ |
| M 9 | 9 | 1 | 94009x1-6gD | 94009x1-6gZ | 94009x1-6hD | 94009x1-6hZ |
| M 10 | 10 | 1 | 94010x1-6gD | 94010x1-6gZ | 94010x1-6hD | 94010x1-6hZ |
| M 11 | 11 | 1 | 94011x1-6gD | 94011x1-6gZ | 94011x1-6hD | 94011x1-6hZ |
| M 12 | 12 | 1 | 94012x1-6gD | 94012x1-6gZ | 94012x1-6hD | 94012x1-6hZ |
| M 13 | 13 | 1 | 94013x1-6gD | 94013x1-6gZ | 94013x1-6hD | 94013x1-6hZ |
| M 14 | 14 | 1 | 94014x1-6gD | 94014x1-6gZ | 94014x1-6hD | 94014x1-6hZ |
| M 15 | 15 | 1 | 94015x1-6gD | 94015x1-6gZ | 94015x1-6hD | 94015x1-6hZ |
| M 16 | 16 | 1 | 94016x1-6gD | 94016x1-6gZ | 94016x1-6hD | 94016x1-6hZ |
| M 17 | 17 | 1 | 94017x1-6gD | 94017x1-6gZ | 94017x1-6hD | 94017x1-6hZ |

Kalibry | Kalibre | Sprawdziany

METRICKÝ ZÁVIT - nestandardní stoupání
 METRICKÝ ZÁVIT - neštandardné stúpanie
 GWINT METRYCZNY - niestandardowy skok gwintu

DIN
13



Na objednávku dodáme i v provedení s levým závitem.
 Na objednávku dodáme aj v prevedení s ľavým závitem.
 Na życzenie dostarczamy również wersję z lewym gwintem.

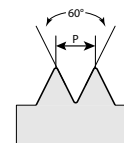
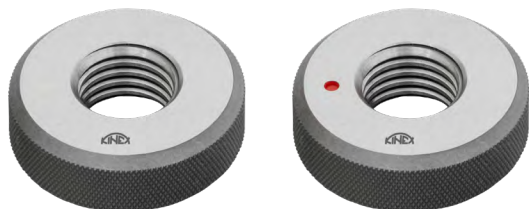
NESTANDARDNÍ STROUPÁNÍ
NEŠTANDARDNÉ STÚPANIE
NIESTANDARDOWY SKOK GWINTU

| | | 6g Go | 6g NoGo | 6h Go | 6h NoGo |
|------|--------|-------------|-------------|-------------|-------------|
| | | | | | |
| d | P [mm] | code | code | code | code |
| M 18 | 1 | 94018x1-6gD | 94018x1-6gZ | 94018x1-6hD | 94018x1-6hZ |
| M 19 | 1 | 94019x1-6gD | 94019x1-6gZ | 94019x1-6hD | 94019x1-6hZ |
| M 20 | 1 | 94020x1-6gD | 94020x1-6gZ | 94020x1-6hD | 94020x1-6hZ |
| M 21 | 1 | 94021x1-6gD | 94021x1-6gZ | 94021x1-6hD | 94021x1-6hZ |
| M 22 | 1 | 94022x1-6gD | 94022x1-6gZ | 94022x1-6hD | 94022x1-6hZ |
| M 23 | 1 | 94023x1-6gD | 94023x1-6gZ | 94023x1-6hD | 94023x1-6hZ |
| M 24 | 1 | 94024x1-6gD | 94024x1-6gZ | 94024x1-6hD | 94024x1-6hZ |
| M 25 | 1 | 94025x1-6gD | 94025x1-6gZ | 94025x1-6hD | 94025x1-6hZ |
| M 26 | 1 | 94026x1-6gD | 94026x1-6gZ | 94026x1-6hD | 94026x1-6hZ |
| M 27 | 1 | 94027x1-6gD | 94027x1-6gZ | 94027x1-6hD | 94027x1-6hZ |
| M 28 | 1 | 94028x1-6gD | 94028x1-6gZ | 94028x1-6hD | 94028x1-6hZ |
| M 29 | 1 | 94029x1-6gD | 94029x1-6gZ | | |
| M 30 | 1 | 94030x1-6gD | 94030x1-6gZ | 94030x1-6hD | 94030x1-6hZ |
| M 32 | 1 | 94032x1-6gD | 94032x1-6gZ | 94032x1-6hD | 94032x1-6hZ |
| M 33 | 1 | 94033x1-6gD | 94033x1-6gZ | 94033x1-6hD | 94033x1-6hZ |
| M 34 | 1 | 94034x1-6gD | 94034x1-6gZ | 94034x1-6hD | 94034x1-6hZ |
| M 35 | 1 | 94035x1-6gD | 94035x1-6gZ | 94035x1-6hD | 94035x1-6hZ |
| M 36 | 1 | 94036x1-6gD | 94036x1-6gZ | 94036x1-6hD | 94036x1-6hZ |
| M 38 | 1 | 94038x1-6gD | 94038x1-6gZ | 94038x1-6hD | 94038x1-6hZ |
| M 39 | 1 | 94039x1-6gD | 94039x1-6gZ | | |
| M 40 | 1 | 94040x1-6gD | 94040x1-6gZ | 94040x1-6hD | 94040x1-6hZ |
| M 42 | 1 | 94042x1-6gD | 94042x1-6gZ | 94042x1-6hD | 94042x1-6hZ |
| M 45 | 1 | 94045x1-6gD | 94045x1-6gZ | 94045x1-6hD | 94045x1-6hZ |
| M 48 | 1 | 94048x1-6gD | 94048x1-6gZ | 94048x1-6hD | 94048x1-6hZ |
| M 50 | 1 | 94050x1-6gD | 94050x1-6gZ | 94050x1-6hD | 94050x1-6hZ |
| M 52 | 1 | 94052x1-6gD | 94052x1-6gZ | 94052x1-6hD | 94052x1-6hZ |
| M 55 | 1 | 94055x1-6gD | 94055x1-6gZ | 94055x1-6hD | 94055x1-6hZ |
| M 56 | 1 | 94056x1-6gD | 94056x1-6gZ | 94056x1-6hD | 94056x1-6hZ |
| M 58 | 1 | 94058x1-6gD | 94058x1-6gZ | 94058x1-6hD | 94058x1-6hZ |
| M 60 | 1 | 94060x1-6gD | 94060x1-6gZ | 94060x1-6hD | 94060x1-6hZ |

Kalibry | Kalibre | Sprawdziany

METRICKÝ ZÁVIT - nestandardní stoupání
 METRICKÝ ZÁVIT - neštandardné stúpanie
 GWINT METRYCZNY - niestandardowy skok gwintu

DIN
13



Na objednávku dodáme i v provedení s levým závitem.
 Na objednávku dodáme aj v prevedení s ľavým závitem.
 Na życzenie dostarczamy również wersję z lewym gwintem.

NESTANDARDNÍ STROUPÁNÍ
NEŠTANDARDNÉ STÚPANIE
NIESTANDARDOWY SKOK GWINTU

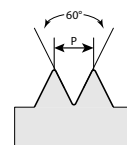
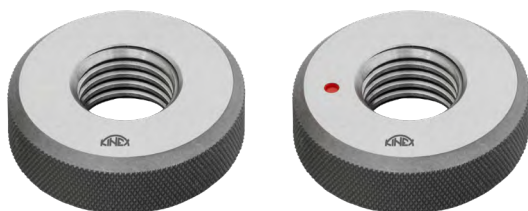
| 6g Go | 6g NoGo | 6h Go | 6h NoGo |
|-------|---------|-------|---------|
| | | | |

| | d | P [mm] | code | code | code | code |
|----------|-----------|-------------|------------------|------------------|--------------|--------------|
| M | 62 | 1 | 94062x1-6gD | 94062x1-6gZ | | |
| M | 64 | 1 | 94064x1-6gD | 94064x1-6gZ | | |
| M | 65 | 1 | 94065x1-6gD | 94065x1-6gZ | | |
| M | 68 | 1 | 94068x1-6gD | 94068x1-6gZ | | |
| M | 70 | 1 | 94070x1-6gD | 94070x1-6gZ | | |
| M | 72 | 1 | 94072x1-6gD | 94072x1-6gZ | | |
| M | 75 | 1 | 94075x1-6gD | 94075x1-6gZ | | |
| M | 76 | 1 | 94076x1-6gD | 94076x1-6gZ | | |
| M | 78 | 1 | 94078x1-6gD | 94078x1-6gZ | | |
| M | 80 | 1 | 94080x1-6gD | 94080x1-6gZ | | |
| M | 8 | 1,25 | 94008-6gD | 94008-6gZ | 94008-6hD | 94008-6hZ |
| M | 9 | 1,25 | 94009-6gD | 94009-6gZ | 94009-6hD | 94009-6hZ |
| M | 10 | 1,25 | 94010x125-gD | 94010x125-gZ | 94010x125-hD | 94010x125-hZ |
| M | 12 | 1,25 | 94012x125-gD | 94012x125-gZ | 94012x125-hD | 94012x125-hZ |
| M | 14 | 1,25 | 94014x125-gD | 94014x125-gZ | 94014x125-hD | 94014x125-hZ |
| M | 16 | 1,25 | 94016x125-gD | 94016x125-gZ | | |
| M | 18 | 1,25 | 94018x125-gD | 94018x125-gZ | | |
| M | 20 | 1,25 | 94020x125-gD | 94020x125-gZ | | |
| M | 22 | 1,25 | 94022x125-gD | 94022x125-gZ | | |
| M | 24 | 1,25 | 94024x125-gD | 94024x125-gZ | | |
| M | 10 | 1,5 | 94010-6gD | 94010-6gZ | 94010-6hD | 94010-6hZ |
| M | 11 | 1,5 | 94011-6gD | 94011-6gZ | 94011-6hD | 94011-6hZ |
| M | 12 | 1,5 | 94012x15-6gD | 94012x15-6gZ | 94012x15-6hD | 94012x15-6hZ |
| M | 13 | 1,5 | 94013x15-6gD | 94013x15-6gZ | 94013x15-6hD | 94013x15-6hZ |
| M | 14 | 1,5 | 94014x15-6gD | 94014x15-6gZ | 94014x15-6hD | 94014x15-6hZ |
| M | 15 | 1,5 | 94015x15-6gD | 94015x15-6gZ | 94015x15-6hD | 94015x15-6hZ |
| M | 16 | 1,5 | 94016x15-6gD | 94016x15-6gZ | 94016x15-6hD | 94016x15-6hZ |
| M | 17 | 1,5 | 94017x15-6gD | 94017x15-6gZ | 94017x15-6hD | 94017x15-6hZ |
| M | 18 | 1,5 | 94018x15-6gD | 94018x15-6gZ | 94018x15-6hD | 94018x15-6hZ |
| M | 19 | 1,5 | 94019x15-6gD | 94019x15-6gZ | | |

Kalibry | Kalibre | Sprawdziany

METRICKÝ ZÁVIT - nestandardní stoupání
 METRICKÝ ZÁVIT - neštandardné stúpanie
 GWINT METRYCZNY - niestandardowy skok gwintu

DIN
13



Na objednávku dodáme i v provedení s levým závitem.
 Na objednávku dodáme aj v prevedení s ľavým závitom.
 Na życzenie dostarczamy również wersję z lewym gwintem.

NESTANDARDNÍ STROUPÁNÍ
NEŠTANDARDNÉ STÚPANIE
NIESTANDARDOWY SKOK GWINTU

6g Go

6g NoGo

6h Go

6h NoGo

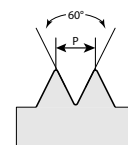
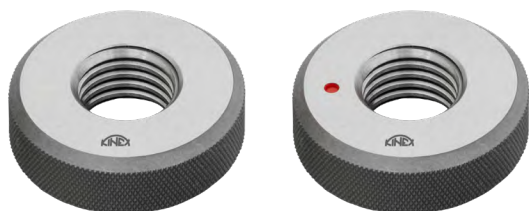


| | d | P [mm] | code | code | code | code |
|---|----|--------|--------------|--------------|--------------|--------------|
| M | 20 | 1,5 | 94020x15-6gD | 94020x15-6gZ | 94020x15-6hD | 94020x15-6hZ |
| M | 21 | 1,5 | 94021x15-6gD | 94021x15-6gZ | | |
| M | 22 | 1,5 | 94022x15-6gD | 94022x15-6gZ | 94022x15-6hD | 94022x15-6hZ |
| M | 24 | 1,5 | 94024x15-6gD | 94024x15-6gZ | 94024x15-6hD | 94024x15-6hZ |
| M | 25 | 1,5 | 94025x15-6gD | 94025x15-6gZ | 94025x15-6hD | 94025x15-6hZ |
| M | 26 | 1,5 | 94026x15-6gD | 94026x15-6gZ | 94026x15-6hD | 94026x15-6hZ |
| M | 27 | 1,5 | 94027x15-6gD | 94027x15-6gZ | 94027x15-6hD | 94027x15-6hZ |
| M | 28 | 1,5 | 94028x15-6gD | 94028x15-6gZ | 94028x15-6hD | 94028x15-6hZ |
| M | 30 | 1,5 | 94030x15-6gD | 94030x15-6gZ | 94030x15-6hD | 94030x15-6hZ |
| M | 32 | 1,5 | 94032x15-6gD | 94032x15-6gZ | 94032x15-6hD | 94032x15-6hZ |
| M | 33 | 1,5 | 94033x15-6gD | 94033x15-6gZ | 94033x15-6hD | 94033x15-6hZ |
| M | 34 | 1,5 | 94034x15-6gD | 94034x15-6gZ | 94034x15-6hD | 94034x15-6hZ |
| M | 35 | 1,5 | 94035x15-6gD | 94035x15-6gZ | 94035x15-6hD | 94035x15-6hZ |
| M | 36 | 1,5 | 94036x15-6gD | 94036x15-6gZ | 94036x15-6hD | 94036x15-6hZ |
| M | 38 | 1,5 | 94038x15-6gD | 94038x15-6gZ | 94038x15-6hD | 94038x15-6hZ |
| M | 39 | 1,5 | 94039x15-6gD | 94039x15-6gZ | 94039x15-6hD | 94039x15-6hZ |
| M | 40 | 1,5 | 94040x15-6gD | 94040x15-6gZ | 94040x15-6hD | 94040x15-6hZ |
| M | 42 | 1,5 | 94042x15-6gD | 94042x15-6gZ | 94042x15-6hD | 94042x15-6hZ |
| M | 45 | 1,5 | 94045x15-6gD | 94045x15-6gZ | 94045x15-6hD | 94045x15-6hZ |
| M | 48 | 1,5 | 94048x15-6gD | 94048x15-6gZ | 94048x15-6hD | 94048x15-6hZ |
| M | 50 | 1,5 | 94050x15-6gD | 94050x15-6gZ | 94050x15-6hD | 94050x15-6hZ |
| M | 52 | 1,5 | 94052x15-6gD | 94052x15-6gZ | 94052x15-6hD | 94052x15-6hZ |
| M | 55 | 1,5 | 94055x15-6gD | 94055x15-6gZ | 94055x15-6hD | 94055x15-6hZ |
| M | 56 | 1,5 | 94056x15-6gD | 94056x15-6gZ | 94056x15-6hD | 94056x15-6hZ |
| M | 58 | 1,5 | 94058x15-6gD | 94058x15-6gZ | 94058x15-6hD | 94058x15-6hZ |
| M | 60 | 1,5 | 94060x15-6gD | 94060x15-6gZ | 94060x15-6hD | 94060x15-6hZ |
| M | 62 | 1,5 | 94062x15-6gD | 94062x15-6gZ | 94062x15-6hD | 94062x15-6hZ |
| M | 64 | 1,5 | 94064x15-6gD | 94064x15-6gZ | 94064x15-6hD | 94064x15-6hZ |
| M | 65 | 1,5 | 94065x15-6gD | 94065x15-6gZ | 94065x15-6hD | 94065x15-6hZ |
| M | 68 | 1,5 | 94068x15-6gD | 94068x15-6gZ | 94068x15-6hD | 94068x15-6hZ |

Kalibry | Kalibre | Sprawdziany

METRICKÝ ZÁVIT - nestandardní stoupání
 METRICKÝ ZÁVIT - neštandardné stúpanie
 GWINT METRYCZNY - niestandardowy skok gwintu

DIN
13



Na objednávku dodáme i v provedení s levým závitem.
 Na objednávku dodáme aj v prevedení s ľavým závitem.
 Na życzenie dostarczamy również wersję z lewym gwintem.

NESTANDARDNÍ STROUPÁNÍ
NEŠTANDARDNÉ STÚPANIE
NIESTANDARDOWY SKOK GWINTU

6g Go

6g NoGo

6h Go

6h NoGo

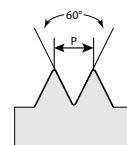
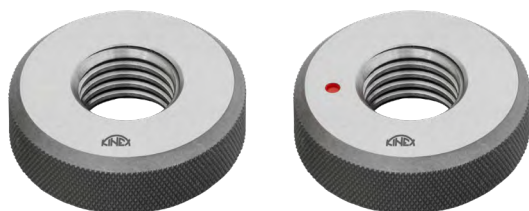


| | d | P [mm] | code | code | code | code |
|---|-----|--------|--------------|--------------|--------------|--------------|
| M | 70 | 1,5 | 94070x15-6gD | 94070x15-6gZ | 94070x15-6hD | 94070x15-6hZ |
| M | 72 | 1,5 | 94072x15-6gD | 94072x15-6gZ | 94072x15-6hD | 94072x15-6hZ |
| M | 75 | 1,5 | 94075x15-6gD | 94075x15-6gZ | 94075x15-6hD | 94075x15-6hZ |
| M | 76 | 1,5 | 94076x15-6gD | 94076x15-6gZ | | |
| M | 78 | 1,5 | 94078x15-6gD | 94078x15-6gZ | 94078x15-6hD | 94078x15-6hZ |
| M | 80 | 1,5 | 94080x15-6gD | 94080x15-6gZ | 94080x15-6hD | 94080x15-6hZ |
| M | 82 | 1,5 | 94082x15-6gD | 94082x15-6gZ | 94082x15-6hD | 94082x15-6hZ |
| M | 85 | 1,5 | 94085x15-6gD | 94085x15-6gZ | 94085x15-6hD | 94085x15-6hZ |
| M | 88 | 1,5 | 94088x15-6gD | 94088x15-6gZ | | |
| M | 90 | 1,5 | 94090x15-6gD | 94090x15-6gZ | | |
| M | 92 | 1,5 | 94092x15-6gD | 94092x15-6gZ | | |
| M | 95 | 1,5 | 94095x15-6gD | 94095x15-6gZ | | |
| M | 98 | 1,5 | 94098x15-6gD | 94098x15-6gZ | | |
| M | 100 | 1,5 | 94100x15-6gD | 94100x15-6gZ | | |
| M | 102 | 1,5 | 94102x15-6gD | 94102x15-6gZ | | |
| M | 105 | 1,5 | 94105x15-6gD | 94105x15-6gZ | | |
| M | 108 | 1,5 | 94108x15-6gD | 94108x15-6gZ | | |
| M | 110 | 1,5 | 94110x15-6gD | 94110x15-6gZ | | |
| M | 112 | 1,5 | 94112x15-6gD | 94112x15-6gZ | | |
| M | 115 | 1,5 | 94115x15-6gD | 94115x15-6gZ | | |
| M | 118 | 1,5 | 94118x15-6gD | 94118x15-6gZ | | |
| M | 120 | 1,5 | 94120x15-6gD | 94120x15-6gZ | | |
| M | 122 | 1,5 | 94122x15-6gD | 94122x15-6gZ | | |
| M | 125 | 1,5 | 94125x15-6gD | 94125x15-6gZ | | |
| M | 128 | 1,5 | 94128x15-6gD | 94128x15-6gZ | | |
| M | 130 | 1,5 | 94130x15-6gD | 94130x15-6gZ | | |
| M | 132 | 1,5 | 94132x15-6gD | 94132x15-6gZ | | |
| M | 135 | 1,5 | 94135x15-6gD | 94135x15-6gZ | | |
| M | 138 | 1,5 | 94138x15-6gD | 94138x15-6gZ | | |
| M | 140 | 1,5 | 94140x15-6gD | 94140x15-6gZ | | |

Kalibry | Kalibre | Sprawdziany

METRICKÝ ZÁVIT - nestandardní stoupání
 METRICKÝ ZÁVIT - neštandardné stúpanie
 GWINT METRYCZNY - niestandardowy skok gwintu

DIN
13



Na objednávku dodáme i v provedení s levým závitom.
 Na objednávku dodáme aj v provedení s ľavým závitom.
 Na życzenie dostarczamy również wersję z lewym gwintem.

NESTANDARDNÍ STROUPÁNÍ
NEŠTANDARDNÉ STÚPANIE
NIESTANDARDOWY SKOK GWINTU

6g Go

6g NoGo

6h Go

6h NoGo

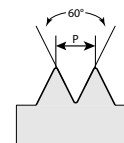
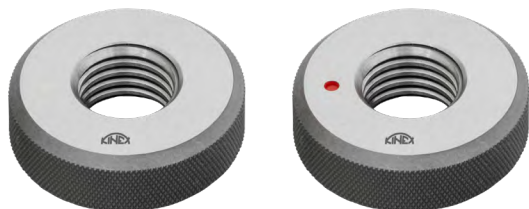


| | d | P [mm] | code | code | code | code |
|---|-----|--------|--------------|--------------|------|------|
| M | 142 | 1,5 | 94142x15-6gD | 94142x15-6gZ | | |
| M | 145 | 1,5 | 94145x15-6gD | 94145x15-6gZ | | |
| M | 148 | 1,5 | 94148x15-6gD | 94148x15-6gZ | | |
| M | 150 | 1,5 | 94150x15-6gD | 94150x15-6gZ | | |
| M | 152 | 1,5 | 94152x15-6gD | 94152x15-6gZ | | |
| M | 155 | 1,5 | 94155x15-6gD | 94155x15-6gZ | | |
| M | 158 | 1,5 | 94158x15-6gD | 94158x15-6gZ | | |
| M | 160 | 1,5 | 94160x15-6gD | 94160x15-6gZ | | |
| M | 162 | 1,5 | 94162x15-6gD | 94162x15-6gZ | | |
| M | 165 | 1,5 | 94165x15-6gD | 94165x15-6gZ | | |
| M | 168 | 1,5 | 94168x15-6gD | 94168x15-6gZ | | |
| M | 170 | 1,5 | 94170x15-6gD | 94170x15-6gZ | | |
| M | 172 | 1,5 | 94172x15-6gD | 94172x15-6gZ | | |
| M | 175 | 1,5 | 94175x15-6gD | 94175x15-6gZ | | |
| M | 178 | 1,5 | 94178x15-6gD | 94178x15-6gZ | | |
| M | 180 | 1,5 | 94180x15-6gD | 94180x15-6gZ | | |
| M | 182 | 1,5 | 94182x15-6gD | 94182x15-6gZ | | |
| M | 185 | 1,5 | 94185x15-6gD | 94185x15-6gZ | | |
| M | 188 | 1,5 | 94188x15-6gD | 94188x15-6gZ | | |
| M | 190 | 1,5 | 94190x15-6gD | 94190x15-6gZ | | |
| M | 192 | 1,5 | 94192x15-6gD | 94192x15-6gZ | | |
| M | 195 | 1,5 | 94195x15-6gD | 94195x15-6gZ | | |
| M | 198 | 1,5 | 94198x15-6gD | 94198x15-6gZ | | |
| M | 200 | 1,5 | 94200x15-6gD | 94200x15-6gZ | | |
| M | 202 | 1,5 | 94202x15-6gD | 94202x15-6gZ | | |
| M | 205 | 1,5 | 94205x15-6gD | 94205x15-6gZ | | |
| M | 210 | 1,5 | 94210x15-6gD | 94210x15-6gZ | | |
| M | 212 | 1,5 | 94212x15-6gD | 94212x15-6gZ | | |
| M | 215 | 1,5 | 94215x15-6gD | 94215x15-6gZ | | |
| M | 218 | 1,5 | 94218x15-6gD | 94218x15-6gZ | | |

Kalibry | Kalibre | Sprawdziany

METRICKÝ ZÁVIT - nestandardní stoupání
 METRICKÝ ZÁVIT - neštandardné stúpanie
 GWINT METRYCZNY - niestandardowy skok gwintu

DIN
13



Na objednávku dodáme i v provedení s levým závitem.
 Na objednávku dodáme aj v prevedení s ľavým závitem.
 Na życzenie dostarczamy również wersję z lewym gwintem.

NESTANDARDNÍ STROUPÁNÍ
NEŠTANDARDNÉ STÚPANIE
NIESTANDARDOWY SKOK GWINTU

6g Go

6g NoGo

6h Go

6h NoGo

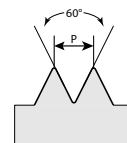
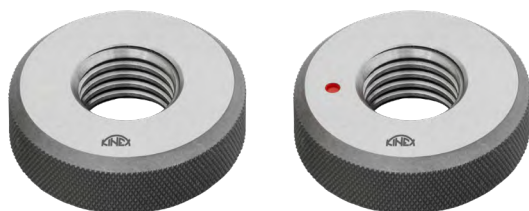


| | d | P [mm] | code | code | code | code |
|----------|-----------|-------------|------------------|------------------|-------------|-------------|
| M | 220 | 1,5 | 94220x15-6gD | 94220x15-6gZ | | |
| M | 222 | 1,5 | 94222x15-6gD | 94222x15-6gZ | | |
| M | 225 | 1,5 | 94225x15-6gD | 94225x15-6gZ | | |
| M | 228 | 1,5 | 94228x15-6gD | 94228x15-6gZ | | |
| M | 230 | 1,5 | 94230x15-6gD | 94230x15-6gZ | | |
| M | 232 | 1,5 | 94232x15-6gD | 94232x15-6gZ | | |
| M | 235 | 1,5 | 94235x15-6gD | 94235x15-6gZ | | |
| M | 238 | 1,5 | 94238x15-6gD | 94238x15-6gZ | | |
| M | 240 | 1,5 | 94240x15-6gD | 94240x15-6gZ | | |
| M | 242 | 1,5 | 94242x15-6gD | 94242x15-6gZ | | |
| M | 245 | 1,5 | 94245x1 5-6gD | 94245x1 5-6gZ | | |
| M | 248 | 1,5 | 94248x1 5-6gD | 94248x1 5-6gZ | | |
| M | 250 | 1,5 | 94250x1 5-6gD | 94250x15-6gZ | | |
| M | 12 | 1,75 | 94012-6gD | 94012-6gZ | 94012-6hD | 94012-6hZ |
| M | 14 | 2 | 94014-6gD | 94014-6gZ | 94014-6hD | 94014-6hZ |
| M | 16 | 2 | 94016-6gD | 94016-6gZ | 94016-6hD | 94016-6hZ |
| M | 18 | 2 | 94018x2-6gD | 94018x2-6gZ | 94018x2-6hD | 94018x2-6hZ |
| M | 20 | 2 | 94020x2-6gD | 94020x2-6gZ | 94020x2-6hD | 94020x2-6hZ |
| M | 22 | 2 | 94022x2-6gD | 94022x2-6gZ | 94022x2-6hD | 94022x2-6hZ |
| M | 24 | 2 | 94024x2-6gD | 94024x2-6gZ | 94024x2-6hD | 94024x2-6hZ |
| M | 25 | 2 | 94025x2-6gD | 94025x2-6gZ | 94025x2-6hD | 94025x2-6hZ |
| M | 26 | 2 | 94026x2-6gD | 94026x2-6gZ | 94026x2-6hD | 94026x2-6hZ |
| M | 27 | 2 | 94027x2-6gD | 94027x2-6gZ | 94027x2-6hD | 94027x2-6hZ |
| M | 28 | 2 | 94028x2-6gD | 94028x2-6gZ | 94028x2-6hD | 94028x2-6hZ |
| M | 30 | 2 | 94030x2-6gD | 94030x2-6gZ | 94030x2-6hD | 94030x2-6hZ |
| M | 32 | 2 | 94032x2-6gD | 94032x2-6gZ | 94032x2-6hD | 94032x2-6hZ |
| M | 33 | 2 | 94033x2-6gD | 94033x2-6gZ | 94033x2-6hD | 94033x2-6hZ |
| M | 34 | 2 | 94034x2-6gD | 94034x2-6gZ | | |
| M | 35 | 2 | 94035x2-6gD | 94035x2-6gZ | | |
| M | 36 | 2 | 94036x2-6gD | 94036x2-6gZ | 94036x2-6hD | 94036x2-6hZ |

Kalibry | Kalibre | Sprawdziany

METRICKÝ ZÁVIT - nestandardní stoupání
 METRICKÝ ZÁVIT - neštandardné stúpanie
 GWINT METRYCZNY - niestandardowy skok gwintu

DIN
13



Na objednávku dodáme i v provedení s levým závitem.
 Na objednávku dodáme aj v prevedení s ľavým závitom.
 Na życzenie dostarczamy również wersję z lewym gwintem.

NESTANDARDNÍ STROUPÁNÍ
NEŠTANDARDNÉ STÚPANIE
NIESTANDARDOWY SKOK GWINTU

6g Go

6g NoGo

6h Go

6h NoGo

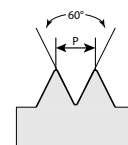
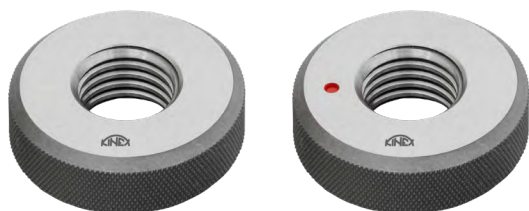


| | d | P [mm] | code | code | code | code |
|---|-----|--------|-------------|-------------|-------------|-------------|
| M | 38 | 2 | 94038x2-6gD | 94038x2-6gZ | 94038x2-6hD | 94038x2-6hZ |
| M | 39 | 2 | 94039x2-6gD | 94039x2-6gZ | 94039x2-6hD | 94039x2-6hZ |
| M | 40 | 2 | 94040x2-6gD | 94040x2-6gZ | 94040x2-6hD | 94040x2-6hZ |
| M | 42 | 2 | 94042x2-6gD | 94042x2-6gZ | 94042x2-6hD | 94042x2-6hZ |
| M | 45 | 2 | 94045x2-6gD | 94045x2-6gZ | 94045x2-6hD | 94045x2-6hZ |
| M | 48 | 2 | 94048x2-6gD | 94048x2-6gZ | 94048x2-6hD | 94048x2-6hZ |
| M | 50 | 2 | 94050x2-6gD | 94050x2-6gZ | 94050x2-6hD | 94050x2-6hZ |
| M | 52 | 2 | 94052x2-6gD | 94052x2-6gZ | 94052x2-6hD | 94052x2-6hZ |
| M | 55 | 2 | 94055x2-6gD | 94055x2-6gZ | 94055x2-6hD | 94055x2-6hZ |
| M | 56 | 2 | 94056x2-6gD | 94056x2-6gZ | 94056x2-6hD | 94056x2-6hZ |
| M | 58 | 2 | 94058x2-6gD | 94058x2-6gZ | 94058x2-6hD | 94058x2-6hZ |
| M | 60 | 2 | 94060x2-6gD | 94060x2-6gZ | 94060x2-6hD | 94060x2-6hZ |
| M | 62 | 2 | 94062x2-6gD | 94062x2-6gZ | 94062x2-6hD | 94062x2-6hZ |
| M | 64 | 2 | 94064x2-6gD | 94064x2-6gZ | 94064x2-6hD | 94064x2-6hZ |
| M | 65 | 2 | 94065x2-6gD | 94065x2-6gZ | 94065x2-6hD | 94065x2-6hZ |
| M | 68 | 2 | 94068x2-6gD | 94068x2-6gZ | | |
| M | 70 | 2 | 94070x2-6gD | 94070x2-6gZ | | |
| M | 72 | 2 | 94072x2-6gD | 94072x2-6gZ | | |
| M | 75 | 2 | 94075x2-6gD | 94075x2-6gZ | | |
| M | 76 | 2 | 94076x2-6gD | 94076x2-6gZ | | |
| M | 78 | 2 | 94078x2-6gD | 94078x2-6gZ | | |
| M | 80 | 2 | 94080x2-6gD | 94080x2-6gZ | | |
| M | 82 | 2 | 94082x2-6gD | 94082x2-6gZ | | |
| M | 85 | 2 | 94085x2-6gD | 94085x2-6gZ | | |
| M | 88 | 2 | 94088x2-6gD | 94088x2-6gZ | | |
| M | 90 | 2 | 94090x2-6gD | 94090x2-6gZ | | |
| M | 92 | 2 | 94092x2-6gD | 94092x2-6gZ | | |
| M | 95 | 2 | 94095x2-6gD | 94095x2-6gZ | | |
| M | 98 | 2 | 94098x2-6gD | 94098x2-6gZ | | |
| M | 100 | 2 | 94100x2-6gD | 94100x2-6gZ | | |

Kalibry | Kalibre | Sprawdziany

METRICKÝ ZÁVIT - nestandardní stoupání
 METRICKÝ ZÁVIT - neštandardné stúpanie
 GWINT METRYCZNY - niestandardowy skok gwintu

DIN
13



Na objednávku dodáme i v provedení s levým závitem.
 Na objednávku dodáme aj v prevedení s ľavým závitem.
 Na życzenie dostarczamy również wersję z lewym gwintem.

NESTANDARDNÍ STROUPÁNÍ
NEŠTANDARDNÉ STÚPANIE
NIESTANDARDOWY SKOK GWINTU

6g Go

6g NoGo

6h Go

6h NoGo

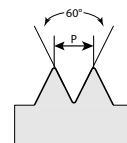
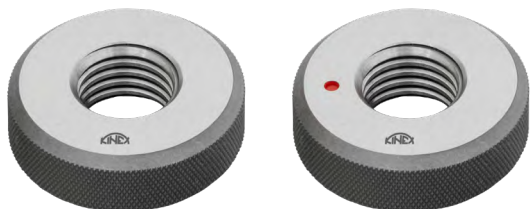


| | d | P [mm] | code | code | code | code |
|---|-----|--------|-------------|-------------|------|------|
| M | 102 | 2 | 94102x2-6gD | 94102x2-6gZ | | |
| M | 105 | 2 | 94105x2-6gD | 94105x2-6gZ | | |
| M | 108 | 2 | 94108x2-6gD | 94108x2-6gZ | | |
| M | 110 | 2 | 94110x2-6gD | 94110x2-6gZ | | |
| M | 112 | 2 | 94112x2-6gD | 94112x2-6gZ | | |
| M | 115 | 2 | 94115x2-6gD | 94115x2-6gZ | | |
| M | 118 | 2 | 94118x2-6gD | 94118x2-6gZ | | |
| M | 120 | 2 | 94120x2-6gD | 94120x2-6gZ | | |
| M | 122 | 2 | 94122x2-6gD | 94122x2-6gZ | | |
| M | 125 | 2 | 94125x2-6gD | 94125x2-6gZ | | |
| M | 128 | 2 | 94128x2-6gD | 94128x2-6gZ | | |
| M | 130 | 2 | 94130x2-6gD | 94130x2-6gZ | | |
| M | 132 | 2 | 94132x2-6gD | 94132x2-6gZ | | |
| M | 135 | 2 | 94135x2-6gD | 94135x2-6gZ | | |
| M | 138 | 2 | 94138x2-6gD | 94138x2-6gZ | | |
| M | 140 | 2 | 94140x2-6gD | 94140x2-6gZ | | |
| M | 142 | 2 | 94142x2-6gD | 94142x2-6gZ | | |
| M | 145 | 2 | 94145x2-6gD | 94145x2-6gZ | | |
| M | 148 | 2 | 94148x2-6gD | 94148x2-6gZ | | |
| M | 150 | 2 | 94150x2-6gD | 94150x2-6gZ | | |
| M | 152 | 2 | 94152x2-6gD | 94152x2-6gZ | | |
| M | 155 | 2 | 94155x2-6gD | 94155x2-6gZ | | |
| M | 158 | 2 | 94158x2-6gD | 94158x2-6gZ | | |
| M | 160 | 2 | 94160x2-6gD | 94160x2-6gZ | | |
| M | 162 | 2 | 94162x2-6gD | 94162x2-6gZ | | |
| M | 165 | 2 | 94165x2-6gD | 94165x2-6gZ | | |
| M | 168 | 2 | 94168x2-6gD | 94168x2-6gZ | | |
| M | 170 | 2 | 94170x2-6gD | 94170x2-6gZ | | |
| M | 172 | 2 | 94172x2-6gD | 94172x2-6gZ | | |
| M | 175 | 2 | 94175x2-6gD | 94175x2-6gZ | | |

Kalibry | Kalibre | Sprawdziany

METRICKÝ ZÁVIT - nestandardní stoupání
 METRICKÝ ZÁVIT - neštandardné stúpanie
 GWINT METRYCZNY - niestandardowy skok gwintu

DIN
13



Na objednávku dodáme i v provedení s levým závitem.
 Na objednávku dodáme aj v prevedení s ľavým závitem.
 Na życzenie dostarczamy również wersję z lewym gwintem.

NESTANDARDNÍ STROUPÁNÍ
NEŠTANDARDNÉ STÚPANIE
NIESTANDARDOWY SKOK GWINTU

6g Go

6g NoGo

6h Go

6h NoGo

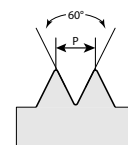
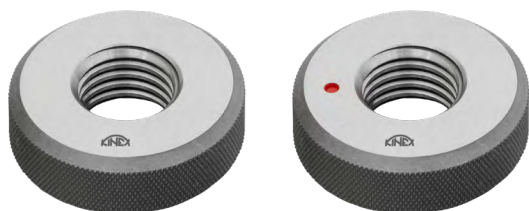


| | d | P [mm] | code | code | code | code |
|---|-----|--------|-------------|-------------|------|------|
| M | 178 | 2 | 94178x2-6gD | 94178x2-6gZ | | |
| M | 180 | 2 | 94180x2-6gD | 94180x2-6gZ | | |
| M | 182 | 2 | 94182x2-6gD | 94182x2-6gZ | | |
| M | 185 | 2 | 94185x2-6gD | 94185x2-6gZ | | |
| M | 188 | 2 | 94188x2-6gD | 94188x2-6gZ | | |
| M | 190 | 2 | 94190x2-6gD | 94190x2-6gZ | | |
| M | 192 | 2 | 94192x2-6gD | 94192x2-6gZ | | |
| M | 195 | 2 | 94195x2-6gD | 94195x2-6gZ | | |
| M | 198 | 2 | 94198x2-6gD | 94198x2-6gZ | | |
| M | 200 | 2 | 94200x2-6gD | 94200x2-6gZ | | |
| M | 202 | 2 | 94202x2-6gD | 94202x2-6gZ | | |
| M | 205 | 2 | 94205x2-6gD | 94205x2-6gZ | | |
| M | 208 | 2 | 94208x2-6gD | 94208x2-6gZ | | |
| M | 210 | 2 | 94210x2-6gD | 94210x2-6gZ | | |
| M | 212 | 2 | 94212x2-6gD | 94212x2-6gZ | | |
| M | 215 | 2 | 94215x2-6gD | 94215x2-6gZ | | |
| M | 218 | 2 | 94218x2-6gD | 94218x2-6gZ | | |
| M | 220 | 2 | 94220x2-6gD | 94220x2-6gZ | | |
| M | 222 | 2 | 94222x2-6gD | 94222x2-6gZ | | |
| M | 225 | 2 | 94225x2-6gD | 94225x2-6gZ | | |
| M | 228 | 2 | 94228x2-6gD | 94228x2-6gZ | | |
| M | 230 | 2 | 94230x2-6gD | 94230x2-6gZ | | |
| M | 232 | 2 | 94232x2-6gD | 94232x2-6gZ | | |
| M | 235 | 2 | 94235x2-6gD | 94235x2-6gZ | | |
| M | 238 | 2 | 94238x2-6gD | 94238x2-6gZ | | |
| M | 240 | 2 | 94240x2-6gD | 94240x2-6gZ | | |
| M | 242 | 2 | 94242x2-6gD | 94242x2-6gZ | | |
| M | 245 | 2 | 94245x2-6gD | 94245x2-6gZ | | |
| M | 248 | 2 | 94248x2-6gD | 94248x2-6gZ | | |
| M | 250 | 2 | 94250x2-6gD | 94250x2-6gZ | | |

Kalibry | Kalibre | Sprawdziany

METRICKÝ ZÁVIT - nestandardní stoupání
 METRICKÝ ZÁVIT - neštandardné stúpanie
 GWINT METRYCZNY - niestandardowy skok gwintu

DIN
13



Na objednávku dodáme i v provedení s levým závitem.
 Na objednávku dodáme aj v prevedení s ľavým závitom.
 Na życzenie dostarczamy również wersję z lewym gwintem.

NESTANDARDNÍ STROUPÁNÍ
NEŠTANDARDNÉ STÚPANIE
NIESTANDARDOWY SKOK GWINTU

6g Go

6g NoGo

6h Go

6h NoGo

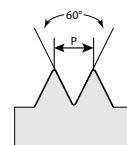
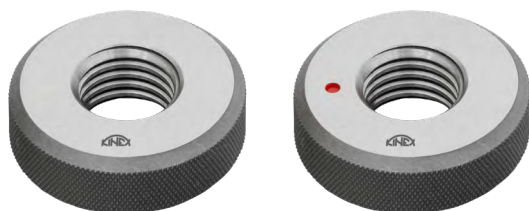


| | d | P [mm] | code | code | code | code |
|---|----|--------|-------------|-------------|-----------|-----------|
| M | 18 | 2,5 | 94018-6gD | 94018-6gZ | 94018-6hD | 94018-6hZ |
| M | 20 | 2,5 | 94020-6gD | 94020-6gZ | 94020-6hD | 94020-6hZ |
| M | 22 | 2,5 | 94022-6gD | 94022-6gZ | 94022-6hD | 94022-6hZ |
| M | 24 | 3 | 94024-6gD | 94024-6gZ | 94024-6hD | 94024-6hZ |
| M | 27 | 3 | 94027-6gD | 94027-6gZ | 94027-6hD | 94027-6hZ |
| M | 30 | 3 | 94030x3-6gD | 94030x3-6gZ | | |
| M | 33 | 3 | 94033x3-6gD | 94033x3-6gZ | | |
| M | 36 | 3 | 94036x3-6gD | 94036x3-6gZ | | |
| M | 39 | 3 | 94039x3-6gD | 94039x3-6gZ | | |
| M | 40 | 3 | 94040x3-6gD | 94040x3-6gZ | | |
| M | 42 | 3 | 94042x3-6gD | 94042x3-6gZ | | |
| M | 45 | 3 | 94045x3-6gD | 94045x3-6gZ | | |
| M | 48 | 3 | 94048x3-6gD | 94048x3-6gZ | | |
| M | 50 | 3 | 94050x3-6gD | 94050x3-6gZ | | |
| M | 52 | 3 | 94052x3-6gD | 94052x3-6gZ | | |
| M | 55 | 3 | 94055x3-6gD | 94055x3-6gZ | | |
| M | 56 | 3 | 94056x3-6gD | 94056x3-6gZ | | |
| M | 58 | 3 | 94058x3-6gD | 94058x3-6gZ | | |
| M | 60 | 3 | 94060x3-6gD | 94060x3-6gZ | | |
| M | 62 | 3 | 94062x3-6gD | 94062x3-6gZ | | |
| M | 64 | 3 | 94064x3-6gD | 94064x3-6gZ | | |
| M | 65 | 3 | 94065x3-6gD | 94065x3-6gZ | | |
| M | 68 | 3 | 94068x3-6gD | 94068x3-6gZ | | |
| M | 70 | 3 | 94070x3-6gD | 94070x3-6gZ | | |
| M | 72 | 3 | 94072x3-6gD | 94072x3-6gZ | | |
| M | 75 | 3 | 94075x3-6gD | 94075x3-6gZ | | |
| M | 76 | 3 | 94076x3-6gD | 94076x3-6gZ | | |
| M | 80 | 3 | 94080x3-6gD | 94080x3-6gZ | | |
| M | 85 | 3 | 94085x3-6gD | 94085x3-6gZ | | |
| M | 90 | 3 | 94090x3-6gD | 94090x3-6gZ | | |

Kalibry | Kalibre | Sprawdziany

METRICKÝ ZÁVIT - nestandardní stoupání
 METRICKÝ ZÁVIT - neštandardné stúpanie
 GWINT METRYCZNY - niestandardowy skok gwintu

DIN
13



Na objednávku dodáme i v provedení s levým závitem.
 Na objednávku dodáme aj v provedení s ľavým závitem.
 Na życzenie dostarczamy również wersję z lewym gwintem.

NESTANDARDNÍ STROUPÁNÍ
NEŠTANDARDNÉ STÚPANIE
NIESTANDARDOWY SKOK GWINTU

6g Go

6g NoGo

6h Go

6h NoGo

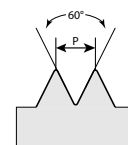
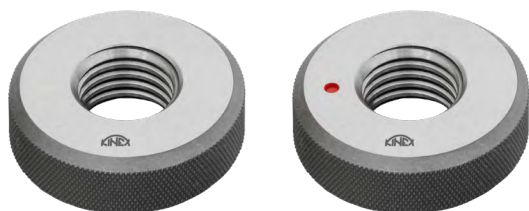


| | d | P [mm] | code | code | code | code |
|---|-----|--------|-------------|-------------|------|------|
| M | 95 | 3 | 94095x3-6gD | 94095x3-6gZ | | |
| M | 100 | 3 | 94100x3-6gD | 94100x3-6gZ | | |
| M | 105 | 3 | 94105x3-6gD | 94105x3-6gZ | | |
| M | 110 | 3 | 94110x3-6gD | 94110x3-6gZ | | |
| M | 115 | 3 | 94115x3-6gD | 94115x3-6gZ | | |
| M | 120 | 3 | 94120x3-6gD | 94120x3-6gZ | | |
| M | 125 | 3 | 94125x3-6gD | 94125x3-6gZ | | |
| M | 130 | 3 | 94130x3-6gD | 94130x3-6gZ | | |
| M | 135 | 3 | 94135x3-6gD | 94135x3-6gZ | | |
| M | 140 | 3 | 94140x3-6gD | 94140x3-6gZ | | |
| M | 145 | 3 | 94145x3-6gD | 94145x3-6gZ | | |
| M | 150 | 3 | 94150x3-6gD | 94150x3-6gZ | | |
| M | 155 | 3 | 94155x3-6gD | 94155x3-6gZ | | |
| M | 160 | 3 | 94160x3-6gD | 94160x3-6gZ | | |
| M | 165 | 3 | 94165x3-6gD | 94165x3-6gZ | | |
| M | 170 | 3 | 94170x3-6gD | 94170x3-6gZ | | |
| M | 175 | 3 | 94175x3-6gD | 94175x3-6gZ | | |
| M | 180 | 3 | 94180x3-6gD | 94180x3-6gZ | | |
| M | 185 | 3 | 94185x3-6gD | 94185x3-6gZ | | |
| M | 190 | 3 | 94190x3-6gD | 94190x3-6gZ | | |
| M | 195 | 3 | 94195x3-6gD | 94195x3-6gZ | | |
| M | 200 | 3 | 94200x3-6gD | 94200x3-6gZ | | |
| M | 205 | 3 | 94205x3-6gD | 94205x3-6gZ | | |
| M | 210 | 3 | 94210x3-6gD | 94210x3-6gZ | | |
| M | 215 | 3 | 94215x3-6gD | 94215x3-6gZ | | |
| M | 220 | 3 | 94220x3-6gD | 94220x3-6gZ | | |
| M | 225 | 3 | 94225x3-6gD | 94225x3-6gZ | | |
| M | 230 | 3 | 94230x3-6gD | 94230x3-6gZ | | |
| M | 235 | 3 | 94235x3-6gD | 94235x3-6gZ | | |
| M | 240 | 3 | 94240x3-6gD | 94240x3-6gZ | | |

Kalibry | Kalibre | Sprawdziany

METRICKÝ ZÁVIT - nestandardní stoupání
 METRICKÝ ZÁVIT - neštandardné stúpanie
 GWINT METRYCZNY - niestandardowy skok gwintu

DIN
13



Na objednávku dodáme i v provedení s levým závitem.
 Na objednávku dodáme aj v prevedení s ľavým závitom.
 Na życzenie dostarczamy również wersję z lewym gwintem.

NESTANDARDNÍ STROUPÁNÍ
NEŠTANDARDNÉ STÚPANIE
NIESTANDARDOWY SKOK GWINTU

6g Go

6g NoGo

6h Go

6h NoGo

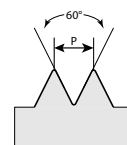
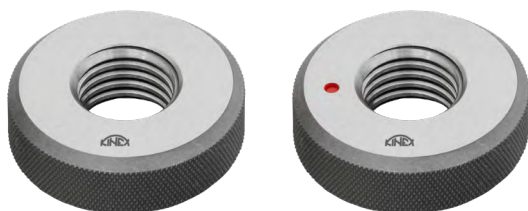


| | d | P [mm] | code | code | code | code |
|----------|-----------|------------|--------------------|--------------------|-----------|-----------|
| M | 245 | 3 | 94245x3-6gD | 94245x3-6gZ | | |
| M | 250 | 3 | 94250x3-6gD | 94250x3-6gZ | | |
| M | 30 | 3,5 | 94030-6gD | 94030-6gZ | 94030-6hD | 94030-6hZ |
| M | 33 | 3,5 | 94033-6gD | 94033-6gZ | 94033-6hD | 94033-6hZ |
| M | 36 | 4 | 94036-6gD | 94036-6gZ | 94036-6hD | 94036-6hZ |
| M | 39 | 4 | 94039-6gD | 94039-6gZ | 94039-6hD | 94039-6hZ |
| M | 52 | 4 | 94052x4-6gD | 94052x4-6gZ | | |
| M | 55 | 4 | 94055x4-6gD | 94055x4-6gZ | | |
| M | 56 | 4 | 94056x4-6gD | 94056x4-6gZ | | |
| M | 58 | 4 | 94058x4-6gD | 94058x4-6gZ | | |
| M | 60 | 4 | 94060x4-6gD | 94060x4-6gZ | | |
| M | 62 | 4 | 94062x4-6gD | 94062x4-6gZ | | |
| M | 64 | 4 | 94064x4-6gD | 94064x4-6gZ | | |
| M | 65 | 4 | 94065x4-6gD | 94065x4-6gZ | | |
| M | 68 | 4 | 94068x4-6gD | 94068x4-6gZ | | |
| M | 70 | 4 | 94070x4-6gD | 94070x4-6gZ | | |
| M | 72 | 4 | 94072x4-6gD | 94072x4-6gZ | | |
| M | 75 | 4 | 94075x4-6gD | 94075x4-6gZ | | |
| M | 76 | 4 | 94076x4-6gD | 94076x4-6gZ | | |
| M | 80 | 4 | 94080x4-6gD | 94080x4-6gZ | | |
| M | 85 | 4 | 94085x4-6gD | 94085x4-6gZ | | |
| M | 90 | 4 | 94090x4-6gD | 94090x4-6gZ | | |
| M | 95 | 4 | 94095x4-6gD | 94095x4-6gZ | | |
| M | 100 | 4 | 94100x4-6gD | 94100x4-6gZ | | |
| M | 105 | 4 | 94105x4-6gD | 94105x4-6gZ | | |
| M | 110 | 4 | 94110x4-6gD | 94110x4-6gZ | | |
| M | 115 | 4 | 94115x4-6gD | 94115x4-6gZ | | |
| M | 120 | 4 | 94120x4-6gD | 94120x4-6gZ | | |
| M | 125 | 4 | 94125x4-6gD | 94125x4-6gZ | | |
| M | 130 | 4 | 94130x4-6gD | 94130x4-6gZ | | |

Kalibry | Kalibre | Sprawdziany

METRICKÝ ZÁVIT - nestandardní stoupání
 METRICKÝ ZÁVIT - neštandardné stúpanie
 GWINT METRYCZNY - niestandardowy skok gwintu

DIN
13



Na objednávku dodáme i v provedení s levým závitem.
 Na objednávku dodáme aj v prevedení s ľavým závitem.
 Na życzenie dostarczamy również wersję z lewym gwintem.

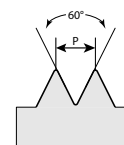
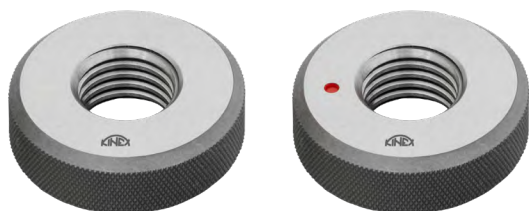
NESTANDARDNÍ STROUPÁNÍ
NEŠTANDARDNÉ STÚPANIE
NIESTANDARDOWY SKOK GWINTU

| | | 6g Go | 6g NoGo | 6h Go | 6h NoGo |
|-------------|------------|------------------|------------------|-----------|-----------|
| | | | | | |
| d | P [mm] | code | code | code | code |
| M 135 | 4 | 94135x4-6gD | 94135x4-6gZ | | |
| M 140 | 4 | 94140x4-6gD | 94140x4-6gZ | | |
| M 145 | 4 | 94145x4-6gD | 94145x4-6gZ | | |
| M 150 | 4 | 94150x4-6gD | 94150x4-6gZ | | |
| M 155 | 4 | 94155x4-6gD | 94155x4-6gZ | | |
| M 160 | 4 | 94160x4-6gD | 94160x4-6gZ | | |
| M 165 | 4 | 94165x4-6gD | 94165x4-6gZ | | |
| M 170 | 4 | 94170x4-6gD | 94170x4-6gZ | | |
| M 175 | 4 | 94175x4-6gD | 94175x4-6gZ | | |
| M 180 | 4 | 94180x4-6gD | 94180x4-6gZ | | |
| M 185 | 4 | 94185x4-6gD | 94185x4-6gZ | | |
| M 190 | 4 | 94190x4-6gD | 94190x4-6gZ | | |
| M 195 | 4 | 94195x4-6gD | 94195x4-6gZ | | |
| M 200 | 4 | 94200x4-6gD | 94200x4-6gZ | | |
| M 205 | 4 | 94205x4-6gD | 94205x4-6gZ | | |
| M 210 | 4 | 94210x4-6gD | 94210x4-6gZ | | |
| M 215 | 4 | 94215x4-6gD | 94215x4-6gZ | | |
| M 220 | 4 | 94220x4-6gD | 94220x4-6gZ | | |
| M 225 | 4 | 94225x4-6gD | 94225x4-6gZ | | |
| M 230 | 4 | 94230x4-6gD | 94230x4-6gZ | | |
| M 235 | 4 | 94235x4-6gD | 94235x4-6gZ | | |
| M 240 | 4 | 94240x4-6gD | 94240x4-6gZ | | |
| M 245 | 4 | 94245x4-6gD | 94245x4-6gZ | | |
| M 250 | 4 | 94250x4-6gD | 94250x4-6gZ | | |
| M 42 | 4,5 | 94042-6gD | 94042-6gZ | 94042-6hD | 94042-6hZ |
| M 45 | 4,5 | 94045-6gD | 94045-6gZ | 94045-6hD | 94045-6hZ |
| M 48 | 5 | 94048-6gD | 94048-6gZ | 94048-6hD | 94048-6hZ |
| M 52 | 5 | 94052-6gD | 94052-6gZ | 94052-6hD | 94052-6hZ |
| M 56 | 5,5 | 94056-6gD | 94056-6gZ | | |
| M 60 | 5,5 | 94060-6gD | 94060-6gZ | | |

Kalibry | Kalibre | Sprawdziany

METRICKÝ ZÁVIT - nestandardní stoupání
 METRICKÝ ZÁVIT - neštandardné stúpanie
 GWINT METRYCZNY - niestandardowy skok gwintu

DIN
13



Na objednávku dodáme i v provedení s levým závitem.
 Na objednávku dodáme aj v prevedení s ľavým závitem.
 Na życzenie dostarczamy również wersję z lewym gwintem.

NESTANDARDNÍ STOUPÁNÍ
NEŠTANDARDNÉ STÚPANIE
NIESTANDARDOWY SKOK GWINTU

6g Go

6g NoGo

6h Go

6h NoGo

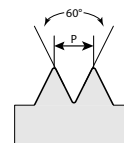
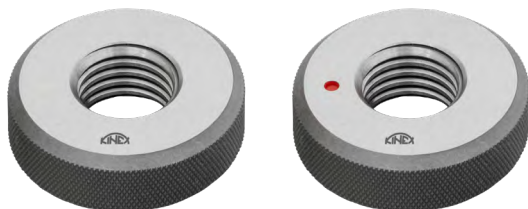


| | d | P [mm] | code | code | code | code |
|---|-----|--------|-------------|-------------|------|------|
| M | 64 | 6 | 94064-6gD | 94064-6gZ | | |
| M | 68 | 6 | 94068-6gD | 94068-6gZ | | |
| M | 70 | 6 | 94070x6-6gD | 94070x6-6gZ | | |
| M | 72 | 6 | 94072x6-6gD | 94072x6-6gZ | | |
| M | 76 | 6 | 94076x6-6gD | 94076x6-6gZ | | |
| M | 80 | 6 | 94080x6-6gD | 94080x6-6gZ | | |
| M | 85 | 6 | 94085x6-6gD | 94085x6-6gZ | | |
| M | 90 | 6 | 94090x6-6gD | 94090x6-6gZ | | |
| M | 95 | 6 | 94095x6-6gD | 94095x6-6gZ | | |
| M | 100 | 6 | 94100x6-6gD | 94100x6-6gZ | | |
| M | 105 | 6 | 94105x6-6gD | 94105x6-6gZ | | |
| M | 110 | 6 | 94110x6-6gD | 94110x6-6gZ | | |
| M | 115 | 6 | 94115x6-6gD | 94115x6-6gZ | | |
| M | 120 | 6 | 94120x6-6gD | 94120x6-6gZ | | |
| M | 125 | 6 | 94125x6-6gD | 94125x6-6gZ | | |
| M | 130 | 6 | 94130x6-6gD | 94130x6-6gZ | | |
| M | 135 | 6 | 94135x6-6gD | 94135x6-6gZ | | |
| M | 140 | 6 | 94140x6-6gD | 94140x6-6gZ | | |
| M | 145 | 6 | 94145x6-6gD | 94145x6-6gZ | | |
| M | 150 | 6 | 94150x6-6gD | 94150x6-6gZ | | |
| M | 155 | 6 | 94155x6-6gD | 94155x6-6gZ | | |
| M | 160 | 6 | 94160x6-6gD | 94160x6-6gZ | | |
| M | 165 | 6 | 94165x6-6gD | 94165x6-6gZ | | |
| M | 170 | 6 | 94170x6-6gD | 94170x6-6gZ | | |
| M | 175 | 6 | 94175x6-6gD | 94175x6-6gZ | | |
| M | 180 | 6 | 94180x6-6gD | 94180x6-6gZ | | |
| M | 185 | 6 | 94185x6-6gD | 94185x6-6gZ | | |
| M | 190 | 6 | 94190x6-6gD | 94190x6-6gZ | | |
| M | 195 | 6 | 94195x6-6gD | 94195x6-6gZ | | |
| M | 200 | 6 | 94200x6-6gD | 94200x6-6gZ | | |

Kalibry | Kalibre | Sprawdziany

METRICKÝ ZÁVIT - nestandardní stoupání
 METRICKÝ ZÁVIT - neštandardné stúpanie
 GWINT METRYCZNY - niestandardowy skok gwintu

DIN
13



Na objednávku dodáme i v provedení s levým závitom.
 Na objednávku dodáme aj v prevedení s ľavým závitom.
 Na życzenie dostarczamy również wersję z lewym gwintem.

NESTANDARDNÍ STROUPÁNÍ
NEŠTANDARDNÉ STÚPANIE
NIESTANDARDOWY SKOK GWINTU

6g Go

6g NoGo

6h Go

6h NoGo

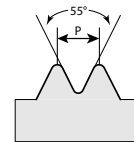
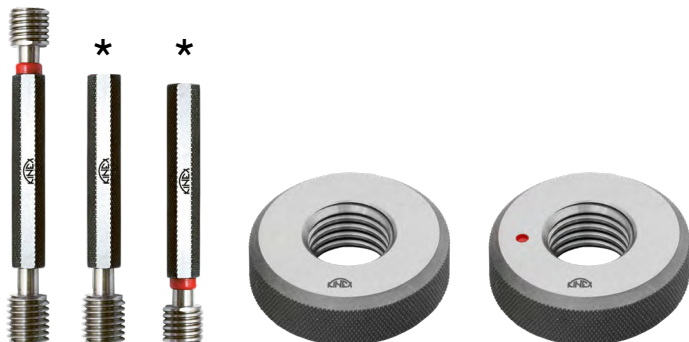


| | d | P [mm] | code | code | code | code |
|---|-----|--------|-------------|-------------|------|------|
| M | 205 | 6 | 94205x6-6gD | 94205x6-6gZ | | |
| M | 210 | 6 | 94210x6-6gD | 94210x6-6gZ | | |
| M | 215 | 6 | 94215x6-6gD | 94215x6-6gZ | | |
| M | 220 | 6 | 94220x6-6gD | 94220x6-6gZ | | |
| M | 225 | 6 | 94225x6-6gD | 94225x6-6gZ | | |
| M | 230 | 6 | 94230x6-6gD | 94230x6-6gZ | | |
| M | 235 | 6 | 94235x6-6gD | 94235x6-6gZ | | |
| M | 240 | 6 | 94240x6-6gD | 94240x6-6gZ | | |
| M | 245 | 6 | 94245x6-6gD | 94245x6-6gZ | | |
| M | 250 | 6 | 94250x6-6gD | 94250x6-6gZ | | |

Kalibry | Kalibre | Sprawdziany

TRUBKOVÝ ZÁVIT VÁLCOVÝ
RÚRKOVÝ ZÁVIT VALCOVÝ
GWINT CYLINDRYCZNY RUROWY

DIN
EN ISO
228



Na objednávku dodáme i v provedení s levým závitem.
Na objednávku dodáme aj v prevedení s ľavým závitom.
Na życzenie dostarczamy również wersję z lewym gwintem.



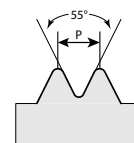
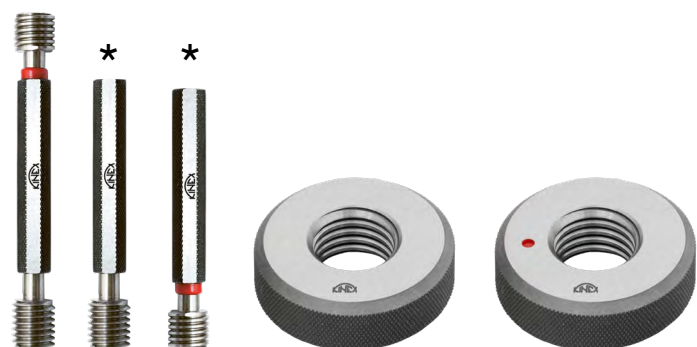
| | d | P [mm] | code | code | code |
|---|--------|--------|---------|--------|--------|
| G | 1/16" | 28 | 93301 | 94301D | 94301Z |
| G | 1/8" | 28 | 93302 | 94302D | 94302Z |
| G | 1/4" | 19 | 93303 | 94303D | 94303Z |
| G | 3/8" | 19 | 93304 | 94304D | 94304Z |
| G | 1/2" | 14 | 93305 | 94305D | 94305Z |
| G | 5/8" | 14 | 93306 | 94306D | 94306Z |
| G | 3/4" | 14 | 93307 | 94307D | 94307Z |
| G | 7/8" | 14 | 93308 | 94308D | 94308Z |
| G | 1" | 11 | 93309 | 94309D | 94309Z |
| G | 1 1/8" | 11 | 93310 | 94310D | 94310Z |
| G | 1 1/4" | 11 | 93311 | 94311D | 94311Z |
| G | 1 1/2" | 11 | 93312 | 94312D | 94312Z |
| G | 1 3/4" | 11 | 93313 | 94313D | 94313Z |
| G | 2" | 11 | 93314 | 94314D | 94314Z |
| G | 2 1/4" | 11 | 93315 | 94315D | 94315Z |
| G | 2 1/2" | 11 | 93316 | 94316D | 94316Z |
| G | 2 3/4" | 11 | 93317 * | 94317D | 94317Z |
| G | 3" | 11 | 93318 * | 94318D | 94318Z |
| G | 3 1/2" | 11 | 93319 * | 94319D | 94319Z |
| G | 4" | 11 | 93320 * | 94320D | 94320Z |
| G | 4 1/2" | 11 | 93321 * | 94321D | 94321Z |
| G | 5" | 11 | 93322 * | 94322D | 94322Z |
| G | 5 1/2" | 11 | 93323 * | 94323D | 94323Z |
| G | 6" | 11 | 93324 * | 94324D | 94324Z |

- * dobrá i zmetková strana se samostatnou rukojetí
- * dobrá aj zmetková strana so samostatnou rukoväťou
- * przechodnia i nieprzechodnia część sprawdzianu z oddzielnym uchwytem

Kalibry | Kalibre | Sprawdziany

WHITWORTHŮV ZÁVIT
WHITWORTHOV ZÁVIT
GWINT WHITWORTHA

BS
84



STANDARDNÍ STOUPÁNÍ
ŠTANDARDNÉ STÚPANIE
STANDARDOWY SKOK GWINTU

| | d | P [mm] | code | code | code |
|-----|--------|--------|---------|--------|--------|
| BSW | 1/8" | 40 | 96401 | 97401D | 97401Z |
| BSW | 3/16" | 24 | 96402 | 97402D | 97402Z |
| BSW | 1/4" | 20 | 96403 | 97403D | 97403Z |
| BSW | 5/16" | 18 | 96404 | 97404D | 97404Z |
| BSW | 3/8" | 16 | 96405 | 97405D | 97405Z |
| BSW | 7/16" | 14 | 96406 | 97406D | 97406Z |
| BSW | 1/2" | 12 | 96407 | 97407D | 97407Z |
| BSW | 9/16" | 12 | 96408 | 97408D | 97408Z |
| BSW | 5/8" | 11 | 96409 | 97409D | 97409Z |
| BSW | 11/16" | 11 | 96410 | 97410D | 97410Z |
| BSW | 3/4" | 10 | 96411 | 97411D | 97411Z |
| BSW | 7/8" | 9 | 96412 | 97412D | 97412Z |
| BSW | 1" | 8 | 96413 | 97413D | 97413Z |
| BSW | 1 1/8" | 7 | 96414 | 97414D | 97414Z |
| BSW | 1 1/4" | 7 | 96415 | 97415D | 97415Z |
| BSW | 1 3/8" | 6 | 96416 | 97416D | 97416Z |
| BSW | 1 1/2" | 6 | 96417 | 97417D | 97417Z |
| BSW | 1 3/4" | 5 | 96418 * | 97418D | 97418Z |
| BSW | 2" | 4 1/2 | 96419 * | 97419D | 97419Z |
| BSW | 2 1/4" | 4 | 96420 * | 97420D | 97420Z |
| BSW | 2 1/2" | 4 | 96421 * | 97421D | 97421Z |
| BSW | 2 3/4" | 3 1/2 | 96422 * | 97422D | 97422Z |
| BSW | 3" | 3 1/2 | 96423 * | 97423D | 97423Z |
| BSW | 3 1/4" | 3 1/4 | 96424 * | 97424D | 97424Z |
| BSW | 3 1/2" | 3 1/4 | 96425 * | 97425D | 97425Z |
| BSW | 3 3/4" | 3 | 96426 * | 97426D | 97426Z |
| BSW | 4" | 3 | 96427 * | 97427D | 97427Z |
| BSW | 4 1/4" | 2 7/8 | 96428 * | 97428D | 97428Z |
| BSW | 4 1/2" | 2 7/8 | 96429 * | 97429D | 97429Z |
| BSW | 4 3/4" | 2 3/4 | 96430 * | 97430D | 97430Z |

- * dobrá i zmetková strana se samostatnou rukojetí
- * dobrá aj zmetková strana so samostatnou rukoväťou
- * przechodnia i nieprzechodnia część sprawdzianu z oddzielnym uchwytem

Kalibry | Kalibre | Sprawdziany

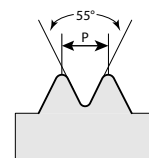
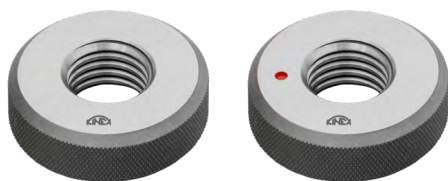
WHITWORTHŮV ZÁVIT
WHITWORTHOV ZÁVIT
GWINT WHITWORTHA

BS
84

| | d | P [mm] | code | code | code |
|-----|--------|--------|---------|--------|--------|
| BSW | 5" | 2 3/4 | 96431 * | 97431D | 97431Z |
| BSW | 5 1/4" | 2 5/8 | 96432 * | 97432D | 97432Z |
| BSW | 5 1/2" | 2 5/8 | 96433 * | 97433D | 97433Z |
| BSW | 5 3/4" | 2 1/2 | 96434 * | 97434D | 97434Z |
| BSW | 6" | 2 1/2 | 96435 * | 97435D | 97435Z |

WHITWORTHŮV ZÁVIT
WHITWORTHOV ZÁVIT
GWINT WHITWORTHA

BS
84



**NESTANDARDNÍ STOUPÁNÍ
NEŠTANDARDNÉ STÚPANIE
NIESTANDARDOWY SKOK GWINTU**

- * dobrá i zmetková strana se samostatnou rukojetí
- * dobrá aj zmetková strana so samostatnou rukoväťou
- * przechodnia i nieprzechodnia część z oddzielnym uchwytem



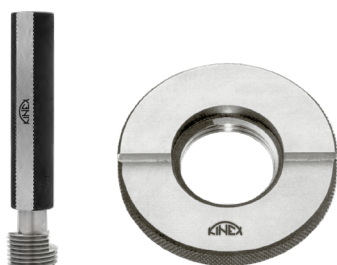
| | d | P [mm] | code | code | code | | d | P [mm] | code | code | code |
|-----|--------|--------|-------|--------|--------|-----|--------|--------|---------|--------|--------|
| BSF | 3/16" | 32 | 96451 | 97451D | 97451Z | BSF | 1 1/4" | 9 | 96466 | 97466D | 97466Z |
| BSF | 7/32" | 28 | 96452 | 97452D | 97452Z | BSF | 1 3/8" | 8 | 96467 | 97467D | 97467Z |
| BSF | 1/4" | 26 | 96453 | 97453D | 97453Z | BSF | 1 1/2" | 8 | 96468 | 97468D | 97468Z |
| BSF | 9/32" | 26 | 96454 | 97454D | 97454Z | BSF | 1 5/8" | 8 | 96469 * | 97469D | 97469Z |
| BSF | 5/16" | 22 | 96455 | 97455D | 97455Z | BSF | 1 3/4" | 7 | 96470 * | 97470D | 97470Z |
| BSF | 3/8" | 20 | 96456 | 97456D | 97456Z | BSF | 2" | 7 | 96471 * | 97471D | 97471Z |
| BSF | 7/16" | 18 | 96457 | 97457D | 97457Z | BSF | 2 1/4" | 6 | 96472 * | 97472D | 97472Z |
| BSF | 1/2" | 16 | 96458 | 97458D | 97458Z | BSF | 2 1/2" | 6 | 96473 * | 97473D | 97473Z |
| BSF | 9/16" | 16 | 96459 | 97459D | 97459Z | BSF | 2 3/4" | 6 | 96474 * | 97474D | 97474Z |
| BSF | 5/8" | 14 | 96460 | 97460D | 97460Z | BSF | 3" | 5 | 96475 * | 97475D | 97475Z |
| BSF | 11/16" | 14 | 96461 | 97461D | 97461Z | BSF | 3 1/4" | 5 | 96476 * | 97476D | 97476Z |
| BSF | 3/4" | 12 | 96462 | 97462D | 97462Z | BSF | 3 1/2" | 5 | 96477 * | 97477D | 97477Z |
| BSF | 7/8" | 11 | 96463 | 97463D | 97463Z | BSF | 3 3/4" | 4 1/2 | 96478 * | 97478D | 97478Z |
| BSF | 1" | 10 | 96464 | 97464D | 97464Z | BSF | 4" | 4 1/2 | 96479 * | 97479D | 97479Z |
| BSF | 1 1/8" | 9 | 96465 | 97465D | 97465Z | BSF | 4 1/4" | 4 | 96480 * | 97480D | 97480Z |

Kalibry | Kalibre | Sprawdziany

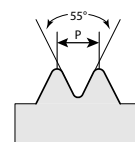
WHITWORTHŮV ZÁVIT TRUBKOVÝ KUŽELOVÝ
WHITWORTHOV ZÁVIT RÚRKOVÝ KUŽELOVÝ
GWINT WHITWORTHA RUROWY STOŻKOWY

DIN
2999

DIN EN
10226
/ISO 7



DIN
2999



DIN EN
10226/ISO 7

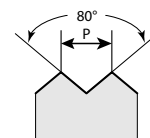


| | d | P [mm] | code | code |
|---|--------|--------|-------|-------|
| R | 1/16" | 28 | 96501 | 97501 |
| R | 1/8" | 28 | 96502 | 97502 |
| R | 1/4" | 19 | 96503 | 97503 |
| R | 3/8" | 19 | 96504 | 97504 |
| R | 1/2" | 14 | 96505 | 97505 |
| R | 3/4" | 14 | 96506 | 97506 |
| R | 1" | 11 | 96507 | 97507 |
| R | 1 1/4" | 11 | 96508 | 97508 |
| R | 1 1/2" | 11 | 96509 | 97509 |
| R | 2" | 11 | 96510 | 97510 |
| R | 2 1/2" | 11 | 96511 | 97511 |
| R | 3" | 11 | 96512 | 97512 |
| R | 4" | 11 | 96513 | 97513 |
| R | 5" | 11 | 96514 | 97514 |
| R | 6" | 11 | 96515 | 97515 |

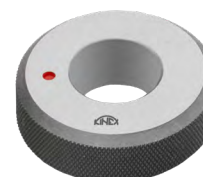
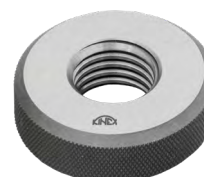
| | d | P [mm] | code | code |
|---|--------|--------|-------|-------|
| R | 1/16" | 28 | 96551 | 97551 |
| R | 1/8" | 28 | 96552 | 97552 |
| R | 1/4" | 19 | 96553 | 97553 |
| R | 3/8" | 19 | 96554 | 97554 |
| R | 1/2" | 14 | 96555 | 97555 |
| R | 3/4" | 14 | 96556 | 97556 |
| R | 1" | 11 | 96557 | 97557 |
| R | 1 1/4" | 11 | 96558 | 97558 |
| R | 1 1/2" | 11 | 96559 | 97559 |
| R | 2" | 11 | 96560 | 97560 |
| R | 2 1/2" | 11 | 96561 | 97561 |
| R | 3" | 11 | 96562 | 97562 |
| R | 4" | 11 | 96563 | 97563 |
| R | 5" | 11 | 96564 | 97564 |
| R | 6" | 11 | 96565 | 97565 |

PANCÉŘOVÝ ZÁVIT
PANCIEROVÝ ZÁVIT
GWINT PANCERNY

DIN
40430



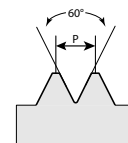
| | d | P [mm] | code | code | code |
|----|------|--------|-------|--------|--------|
| Pg | 7 | 20 | 96951 | 97951D | 97951Z |
| Pg | 9 | 18 | 96952 | 97952D | 97952Z |
| Pg | 11 | 18 | 96953 | 97953D | 97953Z |
| Pg | 13,5 | 18 | 96954 | 97954D | 97954Z |
| Pg | 16 | 18 | 96955 | 97955D | 97955Z |
| Pg | 21 | 16 | 96956 | 97956D | 97956Z |
| Pg | 29 | 16 | 96957 | 97957D | 97957Z |
| Pg | 36 | 16 | 96958 | 97958D | 97958Z |
| Pg | 42 | 16 | 96959 | 97959D | 97959Z |
| Pg | 48 | 16 | 96960 | 97960D | 97960Z |



Kalibry | Kalibre | Sprawdziany

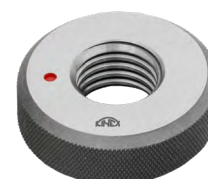
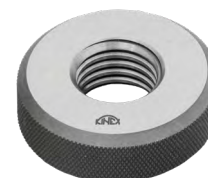
PALCOVÝ UNIFIKOVANÝ ZÁVIT UNC
 PALCOVÝ UNIFIKOVANÝ ZÁVIT UNC
 CALOWY GWINT UNC

**ANSI
 B1.1**



**STANDARDNÍ STOUPÁNÍ
 ŠTANDARDNÉ STÚPANIE
 STANDARDOWY SKOK GWINTU**

| | d | P/" | code | code | code |
|-----|--------|-------|---------|--------|--------|
| UNC | n. 1 | 64 | 96851 | 97851D | 97851Z |
| UNC | n. 2 | 56 | 96852 | 97852D | 97852Z |
| UNC | n. 3 | 48 | 96853 | 97853D | 97853Z |
| UNC | n. 4 | 40 | 96854 | 97854D | 97854Z |
| UNC | n. 5 | 40 | 96855 | 97855D | 97855Z |
| UNC | n. 6 | 32 | 96856 | 97856D | 97856Z |
| UNC | n. 8 | 32 | 96857 | 97857D | 97857Z |
| UNC | n. 10 | 24 | 96858 | 97858D | 97858Z |
| UNC | n. 12 | 24 | 96859 | 97859D | 97859Z |
| UNC | 1/4" | 20 | 96860 | 97860D | 97860Z |
| UNC | 5/16" | 18 | 96861 | 97861D | 97861Z |
| UNC | 3/8" | 16 | 96862 | 97862D | 97862Z |
| UNC | 7/16" | 14 | 96863 | 97863D | 97863Z |
| UNC | 1/2" | 13 | 96864 | 97864D | 97864Z |
| UNC | 9/16" | 12 | 96865 | 97865D | 97865Z |
| UNC | 5/8" | 11 | 96866 | 97866D | 97866Z |
| UNC | 3/4" | 10 | 96867 | 97867D | 97867Z |
| UNC | 7/8" | 9 | 96868 | 97868D | 97868Z |
| UNC | 1" | 8 | 96869 | 97869D | 97869Z |
| UNC | 1 1/8" | 7 | 96870 | 97870D | 97870Z |
| UNC | 1 1/4" | 7 | 96871 | 97871D | 97871Z |
| UNC | 1 3/8" | 6 | 96872 | 97872D | 97872Z |
| UNC | 1 1/2" | 6 | 96873 | 97873D | 97873Z |
| UNC | 1 3/4" | 5 | 96874 * | 97874D | 97874Z |
| UNC | 2" | 4 1/2 | 96875 * | 97875D | 97875Z |
| UNC | 2 1/4" | 4 1/2 | 96876 * | 97876D | 97876Z |
| UNC | 2 1/2" | 4 | 96877 * | 97877D | 97877Z |
| UNC | 2 3/4" | 4 | 96878 * | 97878D | 97878Z |
| UNC | 3" | 4 | 96879 * | 97879D | 97879Z |
| UNC | 3 1/4" | 4 | 96880 * | 97880D | 97880Z |
| UNC | 3 1/2" | 4 | 96881 * | 97881D | 97881Z |
| UNC | 3 3/4" | 4 | 96882 * | 97882D | 97882Z |
| UNC | 4" | 4 | 96883 * | 97883D | 97883Z |

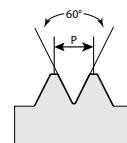


* dobrá i zmetková strana se samostatnou rukojetí
 * dobrá aj zmetková strana so samostatnou rukoväťou
 * przechodnia i nieprzechodnia część sprawdzianu z oddzielnym uchwytem

Kalibry | Kalibre | Sprawdziany

PALCOVÝ UNIFIKOVANÝ ZÁVIT UNF
 PALCOVÝ UNIFIKOVANÝ ZÁVIT UNF
 CALOWY GWINT UNF

**ANSI
 B1.1**



**NESTANDARDNÍ STOUPÁNÍ
 NEŠTANDARDNÉ STÚPANIE
 NIESTANDARDOWY SKOK GWINTU**

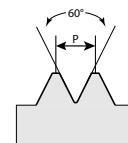


| | d | P/“ | code | code | code | | d | P/“ | code | code | code |
|-----|-------|-----|-------|--------|--------|-----|--------|-----|-------|--------|--------|
| UNF | n. 0 | 80 | 96901 | 97901D | 97901Z | UNF | 3/8" | 24 | 96913 | 97913D | 97913Z |
| UNF | n. 1 | 72 | 96902 | 97902D | 97902Z | UNF | 7/16" | 20 | 96914 | 97914D | 97914Z |
| UNF | n. 2 | 64 | 96903 | 97903D | 97903Z | UNF | 1/2" | 20 | 96915 | 97915D | 97915Z |
| UNF | n. 3 | 56 | 96904 | 97904D | 97904Z | UNF | 9/16" | 18 | 96916 | 97916D | 97916Z |
| UNF | n. 4 | 48 | 96905 | 97905D | 97905Z | UNF | 5/8" | 18 | 96917 | 97917D | 97917Z |
| UNF | n. 5 | 44 | 96906 | 97906D | 97906Z | UNF | 3/4" | 16 | 96918 | 97918D | 97918Z |
| UNF | n. 6 | 40 | 96907 | 97907D | 97907Z | UNF | 7/8" | 14 | 96919 | 97919D | 97919Z |
| UNF | n. 8 | 36 | 96908 | 97908D | 97908Z | UNF | 1" | 12 | 96920 | 97920D | 97920Z |
| UNF | n. 10 | 32 | 96909 | 97909D | 97909Z | UNF | 1 1/8" | 12 | 96921 | 97921D | 97921Z |
| UNF | n. 12 | 28 | 96910 | 97910D | 97910Z | UNF | 1 1/4" | 12 | 96922 | 97922D | 97922Z |
| UNF | 1/4" | 28 | 96911 | 97911D | 97911Z | UNF | 1 3/8" | 12 | 96923 | 97923D | 97923Z |
| UNF | 5/16" | 24 | 96912 | 97912D | 97912Z | UNF | 1 1/2" | 12 | 96924 | 97924D | 97924Z |

Kalibry | Kalibre | Sprawdziany

PALCOVÝ UNIFIKOVANÝ ZÁVIT UNEF
 PALCOVÝ UNIFIKOVANÝ ZÁVIT UNEF
 CALOWY GWINT UNEF

**ANSI
 B1.1**



**NESTANDARDNÍ STOUPÁNÍ
 NEŠTANDARDNÉ STÚPANIE
 NIESTANDARDOWY SKOK GWINTU**

2B 2A 2A



| | d | P/" | code | code | code |
|------|----------|-----|-------|--------|--------|
| UNEF | n. 12 | 32 | 96751 | 97751D | 97751Z |
| UNEF | 1/4" | 32 | 96752 | 97752D | 97752Z |
| UNEF | 5/16" | 32 | 96753 | 97753D | 97753Z |
| UNEF | 3/8" | 32 | 96754 | 97754D | 97754Z |
| UNEF | 7/16" | 28 | 96755 | 97755D | 97755Z |
| UNEF | 1/2" | 28 | 96756 | 97756D | 97756Z |
| UNEF | 9/16" | 24 | 96757 | 97757D | 97757Z |
| UNEF | 5/8" | 24 | 96758 | 97758D | 97758Z |
| UNEF | 11/16" | 24 | 96759 | 97759D | 97759Z |
| UNEF | 3/4" | 20 | 96760 | 97760D | 97760Z |
| UNEF | 13/16" | 20 | 96761 | 97761D | 97761Z |
| UNEF | 7/8" | 20 | 96762 | 97762D | 97762Z |
| UNEF | 15/16" | 20 | 96763 | 97763D | 97763Z |
| UNEF | 1" | 20 | 96764 | 97764D | 97764Z |
| UNEF | 1 1/16" | 18 | 96765 | 97765D | 97765Z |
| UNEF | 1 1/8" | 18 | 96766 | 97766D | 97766Z |
| UNEF | 1 3/16" | 18 | 96767 | 97767D | 97767Z |
| UNEF | 1 1/4" | 18 | 96768 | 97768D | 97768Z |
| UNEF | 1 5/16" | 18 | 96769 | 97769D | 97769Z |
| UNEF | 1 3/8" | 18 | 96770 | 97770D | 97770Z |
| UNEF | 1 7/16" | 18 | 96771 | 97771D | 97771Z |
| UNEF | 1 1/2" | 18 | 96772 | 97772D | 97772Z |
| UNEF | 1 9/16" | 18 | 96773 | 97773D | 97773Z |
| UNEF | 1 5/8" | 18 | 96774 | 97774D | 97774Z |
| UNEF | 1 11/16" | 18 | 96775 | 97775D | 97775Z |

Kalibry | Kalibre | Sprawdziany

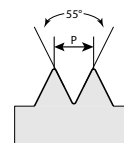
UNIFIKOVANÝ PALCOVÝ ZÁVIT UNS/UN
UNIFIKOVANÝ PALCOVÝ ZÁVIT UNS / UN
GWINT CALOWY UNS / UN

**ANSI
B1.2**



UNS

UN



**NESTANDARDNÍ STOUPÁNÍ
NEŠTANDARDNÉ STÚPANIE
NIESTANDARDOWY SKOK GWINTU**

2B

2A

2A



| | d | P/“ | code | code | code |
|-----|----------|------------|-------------|-------------|-------------|
| UNS | 1/4" | 36 | 96701 | 97701D | 97701Z |
| UN | 1" | 32 | 96702 | 97702D | 97702Z |
| UN | 11/16" | 16 | 96703 | 97703D | 97703Z |
| UN | 13/16" | 16 | 96704 | 97704D | 97704Z |
| UN | 7/8" | 16 | 96705 | 97705D | 97705Z |
| UN | 1" | 14 | 96706 | 97706D | 97706Z |
| UN | 1 1/16" | 12 | 96707 | 97707D | 97707Z |
| UN | 1 3/16" | 12 | 96708 | 97708D | 97708Z |
| UN | 1 5/16" | 12 | 96709 | 97709D | 97709Z |
| UN | 1 5/8" | 12 | 96710 | 97710D | 97710Z |
| UN | 1 3/4" | 12 | 96711 | 97711D | 97711Z |
| UN | 1 7/8" | 12 | 96712 | 97712D | 97712Z |
| UN | 2" | 12 | 96713 | 97713D | 97713Z |
| UN | 1 1/8" | 8 | 96714 | 97714D | 97714Z |
| UN | 1 1/4" | 8 | 96715 | 97715D | 97715Z |
| UN | 1 3/8" | 8 | 96716 | 97716D | 97716Z |
| UN | 1 1/2" | 8 | 96717 | 97717D | 97717Z |
| UN | 1 5/8" | 8 | 96718 | 97718D | 97718Z |
| UN | 1 3/4" | 8 | 96719 | 97719D | 97719Z |
| UN | 2" | 8 | 96720 | 97720D | 97720Z |

Kalibry | Kalibre | Sprawdziany

UNIFIKOVANÝ PALCOVÝ ZÁVIT UNJC
UNIFIKOVANÝ PALCOVÝ ZÁVIT UNJC
GWINT CALOWY UNJC

**ANSI
B1.2**



**NESTANDARDNÍ STOUPÁNÍ
NEŠTANDARDNÉ STÚPANIE
NIESTANDARDOWY SKOK GWINTU**



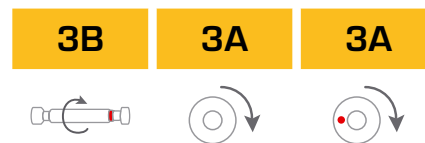
| | d | P/" | code | code | code |
|------|-------|-----|-------|--------|--------|
| UNJC | n. 2 | 56 | 96801 | 97801D | 97801Z |
| UNJC | n. 4 | 40 | 96802 | 97802D | 97802Z |
| UNJC | n. 6 | 32 | 96803 | 97803D | 97803Z |
| UNJC | n. 8 | 32 | 96804 | 97804D | 97804Z |
| UNJC | n. 10 | 24 | 96805 | 97805D | 97805Z |
| UNJC | 1/4" | 20 | 96806 | 97806D | 97806Z |
| UNJC | 5/16" | 18 | 96807 | 97807D | 97807Z |
| UNJC | 3/8" | 16 | 96808 | 97808D | 97808Z |
| UNJC | 7/16" | 14 | 96809 | 97809D | 97809Z |

UNIFIKOVANÝ PALCOVÝ ZÁVIT UNJF
UNIFIKOVANÝ PALCOVÝ ZÁVIT UNJF
GWINT CALOWY UNJF

**ANSI
B1.2**



**NESTANDARDNÍ STOUPÁNÍ
NEŠTANDARDNÉ STÚPANIE
NIESTANDARDOWY SKOK GWINTU**



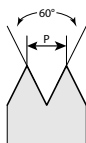
| | d | P/" | code | code | code |
|------|-------|-----|-------|--------|--------|
| UNJF | n. 4 | 48 | 96821 | 97821D | 97821Z |
| UNJF | n. 6 | 40 | 96822 | 97822D | 97822Z |
| UNJF | n. 8 | 36 | 96823 | 97823D | 97823Z |
| UNJF | n. 10 | 32 | 96824 | 97824D | 97824Z |
| UNJF | n. 12 | 28 | 96825 | 97825D | 97825Z |
| UNJF | 1/4" | 28 | 96826 | 97826D | 97826Z |
| UNJF | 5/16" | 24 | 96827 | 97827D | 97827Z |
| UNJF | 3/8" | 24 | 96828 | 97828D | 97828Z |
| UNJF | 7/16" | 20 | 96829 | 97829D | 97829Z |
| UNJF | 1/2" | 20 | 96830 | 97830D | 97830Z |
| UNJF | 9/16" | 18 | 96831 | 97831D | 97831Z |
| UNJF | 5/8" | 18 | 96832 | 97832D | 97832Z |
| UNJF | 3/4" | 16 | 96833 | 97833D | 97833Z |
| UNJF | 7/8" | 14 | 96834 | 97834D | 97834Z |
| UNJF | 1" | 12 | 96835 | 97835D | 97835Z |

Kalibry | Kalibre | Sprawdziany

TRUBKOVÝ ZÁVIT KUŽELOVÝ NPT
RÚRKOVÝ ZÁVIT KUŽELOVÝ NPT
GWINT RUROWY STOŻKOWY NPT

ANSI
B1.20.1

NPT



**STANDARDNÍ STOUPÁNÍ
ŠTANDARDNÉ STÚPANIE
STANDARDOWY SKOK GWINTU**

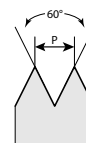


| | d | P/" | code | code |
|-----|--------|--------|-------|-------|
| NPT | 1/16" | 27 | 96651 | 97651 |
| NPT | 1/8" | 27 | 96652 | 97652 |
| NPT | 1/4" | 18 | 96653 | 97653 |
| NPT | 3/8" | 18 | 96654 | 97654 |
| NPT | 1/2" | 14 | 96655 | 97655 |
| NPT | 3/4" | 14 | 96656 | 97656 |
| NPT | 1" | 11 1/2 | 96657 | 97657 |
| NPT | 1 1/4" | 11 1/2 | 96658 | 97658 |
| NPT | 1 1/2" | 11 1/2 | 96659 | 97659 |
| NPT | 2" | 11 1/2 | 96660 | 97660 |
| NPT | 2 1/2" | 8 | 96661 | 97661 |
| NPT | 3" | 8 | 96662 | 97662 |
| NPT | 3 1/2" | 8 | 96663 | 97663 |
| NPT | 4" | 8 | 96664 | 97664 |

TRUBKOVÝ ZÁVIT KUŽELOVÝ NPTF
RÚRKOVÝ ZÁVIT KUŽELOVÝ NPTF
GWINT RUROWY STOŻKOWY NPTF

ANSI
B1.20.3

NPTF



**NESTANDARDNÍ STOUPÁNÍ
NEŠTANDARDNÉ STÚPANIE
NIESTANDARDOWY SKOK GWINTU**



| | d | P/" | code | code |
|------|--------|--------|-------|-------|
| NPTF | 1/16" | 27 | 96681 | 97681 |
| NPTF | 1/8" | 27 | 96682 | 97682 |
| NPTF | 1/4" | 18 | 96683 | 97683 |
| NPTF | 3/8" | 18 | 96684 | 97684 |
| NPTF | 1/2" | 14 | 96685 | 97685 |
| NPTF | 3/4" | 14 | 96686 | 97686 |
| NPTF | 1" | 11 1/2 | 96687 | 97687 |
| NPTF | 1 1/4" | 11 1/2 | 96688 | 97688 |
| NPTF | 1 1/2" | 11 1/2 | 96689 | 97689 |
| NPTF | 2" | 11 1/2 | 96690 | 97690 |
| NPTF | 2 1/2" | 8 | 96691 | 97691 |
| NPTF | 3" | 8 | 96692 | 97692 |

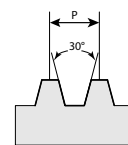
Kalibry | Kalibre | Sprawdziany

LICHOBĚŽNÍKOVÝ ROVNORAMENNÝ ZÁVIT (TRAPÉZOVÝ)
 LICHOBĚŽNÍKOVÝ ROVNORAMENNÝ ZÁVIT (TRAPÉZOVÝ)
 TRAPEZOWY RÓWNORAMIENNY GWINT (TRAPEZOWY)

DIN
103



Tr



7H **7e** **7e**



| | d | P [mm] | code | code | code |
|----|----|--------|-------|--------|--------|
| Tr | 8 | 1,5 | 96308 | 97308D | 97308Z |
| Tr | 10 | 2 | 96310 | 97310D | 97310Z |
| Tr | 11 | 2 | 96311 | 97311D | 97311Z |
| Tr | 12 | 3 | 96312 | 97312D | 97312Z |
| Tr | 14 | 3 | 96314 | 97314D | 97314Z |
| Tr | 16 | 4 | 96316 | 97316D | 97316Z |
| Tr | 18 | 4 | 96318 | 97318D | 97318Z |
| Tr | 20 | 4 | 96320 | 97320D | 97320Z |
| Tr | 22 | 5 | 96322 | 97322D | 97322Z |
| Tr | 24 | 5 | 96324 | 97324D | 97324Z |
| Tr | 26 | 5 | 96326 | 97326D | 97326Z |
| Tr | 28 | 5 | 96328 | 97328D | 97328Z |
| Tr | 30 | 6 | 96330 | 97330D | 97330Z |

7H **7e** **7e**



| | d | P [mm] | code | code | code |
|----|----|--------|---------|--------|--------|
| Tr | 32 | 6 | 96332 | 97332D | 97332Z |
| Tr | 34 | 6 | 96334 | 97334D | 97334Z |
| Tr | 36 | 6 | 96336 | 97336D | 97336Z |
| Tr | 38 | 7 | 96338 | 97338D | 97338Z |
| Tr | 40 | 7 | 96340 | 97340D | 97340Z |
| Tr | 42 | 7 | 96342 * | 97342D | 97342Z |
| Tr | 44 | 7 | 96344 * | 97344D | 97344Z |
| Tr | 46 | 8 | 96346 * | 97346D | 97346Z |
| Tr | 48 | 8 | 96348 * | 97348D | 97348Z |
| Tr | 50 | 8 | 96350 * | 97350D | 97350Z |
| Tr | 52 | 8 | 96352 * | 97352D | 97352Z |
| Tr | 55 | 9 | 96355 * | 97355D | 97355Z |
| Tr | 60 | 9 | 96360 * | 97360D | 97360Z |

- * dobrá i zmetková strana se samostatnou rukojetí
- * dobrá aj zmetková strana so samostatnou rukoväťou
- * przechodnia i nieprzechodnia część z oddzielnym uchwytem

Kalibry | Kalibre | Sprawdziany

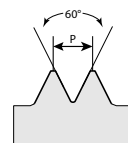
MEZNÍ ZÁVITOVÝ TRN PRO OPRAVU ZÁVITŮ
MEDZNY ZÁVITOVÝ TRŇ PRE OPRAVU ZÁVITOV
SPRAWDZIAN GRANICZNY DO NAPRAWY GWINTÓW

DIN
8140-2



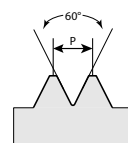
**EG
M**

**EG
MF**



**EG
UNC**

**EG
UNF**



6H

2B



| | d | P [mm] | code |
|------|-----|--------|-------------|
| EG M | 2 | 0,4 | 93002EG |
| EG M | 2,5 | 0,45 | 93002,5EG |
| EG M | 3 | 0,5 | 93003EG |
| EG M | 4 | 0,7 | 93004EG |
| EG M | 5 | 0,8 | 93005EG |
| EG M | 6 | 1 | 93006EG |
| EG M | 7 | 1 | 93007EG |
| EG M | 8 | 1,25 | 93008EG |
| EG M | 10 | 1,5 | 93010EG |
| EG M | 12 | 1,75 | 93012EG |
| EG M | 14 | 2 | 93014EG |
| EG M | 16 | 2 | 93016EG |
| EG M | 18 | 2,5 | 93018EG |
| EG M | 20 | 2,5 | 93020EG |
| EG M | 24 | 3 | 93024EG |
| EG M | 8 | 1 | 93008x1EG |
| EG M | 10 | 1 | 93010x1EG |
| EG M | 10 | 1,25 | 93010x125EG |
| EG M | 12 | 1,25 | 93012x125EG |
| EG M | 12 | 1,5 | 93012x15EG |
| EG M | 14 | 1,5 | 93014x15EG |
| EG M | 16 | 1,5 | 93016x15EG |
| EG M | 18 | 1,5 | 93018x15EG |
| EG M | 20 | 1,5 | 93020x15EG |
| EG M | 22 | 1,5 | 93022x15EG |
| EG M | 24 | 1,5 | 93024x15EG |

| | d | P [mm] | code |
|--------|-------|--------|---------|
| EG UNC | n. 2 | 56 | 96852EG |
| EG UNC | n. 4 | 40 | 96854EG |
| EG UNC | n. 5 | 40 | 96855EG |
| EG UNC | n. 6 | 32 | 96856EG |
| EG UNC | n. 8 | 32 | 96857EG |
| EG UNC | n. 10 | 24 | 96858EG |
| EG UNC | n. 12 | 24 | 96859EG |
| EG UNC | 1/4" | 20 | 96860EG |
| EG UNC | 5/16" | 18 | 96861EG |
| EG UNC | 3/8" | 16 | 96862EG |
| EG UNC | 1/2" | 13 | 96864EG |
| EG UNC | 5/8" | 11 | 96866EG |
| EG UNF | n. 4 | 48 | 96905EG |
| EG UNF | n. 5 | 44 | 96906EG |
| EG UNF | n. 6 | 40 | 96907EG |
| EG UNF | n. 8 | 36 | 96908EG |
| EG UNF | n. 10 | 32 | 96909EG |
| EG UNF | n. 12 | 28 | 96910EG |
| EG UNF | 1/4" | 28 | 96911EG |
| EG UNF | 5/16" | 24 | 96912EG |
| EG UNF | 3/8" | 24 | 96913EG |
| EG UNF | 7/16" | 20 | 96914EG |
| EG UNF | 1/2" | 20 | 96915EG |
| EG UNF | 9/16" | 18 | 96916EG |
| EG UNF | 5/8" | 18 | 96917EG |

Kalibry | Kalibre | Sprawdziany

MEZNÍ VÁLEČKOVÝ KALIBR
MEDZNY VALČEKOVÝ KALIBER
SPRAWDZIAN GRANICZNY TŁOCZKOWY

DIN
7164



H7 **H8**



| d | code | code |
|-----|-----------|-----------|
| 0,5 | 92000,5H7 | 92000,5H8 |
| 0,6 | 92000,6H7 | 92000,6H8 |
| 0,7 | 92000,7H7 | 92000,7H8 |
| 0,8 | 92000,8H7 | 92000,8H8 |
| 0,9 | 92000,9H7 | 92000,9H8 |
| 1 | 92001H7 | 92001H8 |
| 1,2 | 92001,2H7 | 92001,2H8 |
| 1,5 | 92001,5H7 | 92001,5H8 |
| 1,8 | 92001,8H7 | 92001,8H8 |
| 2 | 92002H7 | 92002H8 |
| 2,2 | 92002,2H7 | 92002,2H8 |
| 2,5 | 92002,5H7 | 92002,5H8 |
| 2,8 | 92002,8H7 | 92002,8H8 |
| 3 | 92003H7 | 92003H8 |
| 3,5 | 92003,5H7 | 92003,5H8 |
| 4 | 92004H7 | 92004H8 |
| 4,5 | 92004,5H7 | 92004,5H8 |
| 5 | 92005H7 | 92005H8 |
| 5,5 | 92005,5H7 | 92005,5H8 |
| 6 | 92006H7 | 92006H8 |
| 7 | 92007H7 | 92007H8 |
| 8 | 92008H7 | 92008H8 |
| 9 | 92009H7 | 92009H8 |
| 10 | 92010H7 | 92010H8 |
| 11 | 92011H7 | 92011H8 |
| 12 | 92012H7 | 92012H8 |
| 13 | 92013H7 | 92013H8 |
| 14 | 92014H7 | 92014H8 |
| 15 | 92015H7 | 92015H8 |
| 16 | 92016H7 | 92016H8 |
| 17 | 92017H7 | 92017H8 |
| 18 | 92018H7 | 92018H8 |
| 19 | 92019H7 | 92019H8 |
| 20 | 92020H7 | 92020H8 |

| | H7 | H8 |
|----|---------|---------|
| | | |
| d | code | code |
| 21 | 92021H7 | 92021H8 |
| 22 | 92022H7 | 92022H8 |
| 23 | 92023H7 | 92023H8 |
| 24 | 92024H7 | 92024H8 |
| 25 | 92025H7 | 92025H8 |
| 26 | 92026H7 | 92026H8 |
| 27 | 92027H7 | 92027H8 |
| 28 | 92028H7 | 92028H8 |
| 29 | 92029H7 | 92029H8 |
| 30 | 92030H7 | 92030H8 |
| 31 | 92031H7 | 92031H8 |
| 32 | 92032H7 | 92032H8 |
| 33 | 92033H7 | 92033H8 |
| 34 | 92034H7 | 92034H8 |
| 35 | 92035H7 | 92035H8 |
| 36 | 92036H7 | 92036H8 |
| 37 | 92037H7 | 92037H8 |
| 38 | 92038H7 | 92038H8 |
| 39 | 92039H7 | 92039H8 |
| 40 | 92040H7 | 92040H8 |
| 41 | 92041H7 | 92041H8 |
| 42 | 92042H7 | 92042H8 |
| 43 | 92043H7 | 92043H8 |
| 44 | 92044H7 | 92044H8 |
| 45 | 92045H7 | 92045H8 |
| 46 | 92046H7 | 92046H8 |
| 47 | 92047H7 | 92047H8 |
| 48 | 92048H7 | 92048H8 |
| 49 | 92049H7 | 92049H8 |
| 50 | 92050H7 | 92050H8 |
| 51 | 92051H7 | 92051H8 |
| 52 | 92052H7 | 92052H8 |
| 53 | 92053H7 | 92053H8 |
| 54 | 92054H7 | 92054H8 |
| 55 | 92055H7 | 92055H8 |
| 56 | 92056H7 | 92056H8 |
| 57 | 92057H7 | 92057H8 |
| 58 | 92058H7 | 92058H8 |
| 59 | 92059H7 | 92059H8 |
| 60 | 92060H7 | 92060H8 |
| 61 | 92061H7 | 92061H8 |
| 62 | 92062H7 | 92062H8 |

| | H7 | H8 |
|-----|-----------|-----------|
| | | |
| d | code | code |
| 63 | 92063H7 | 92063H8 |
| 64 | 92064H7 | 92064H8 |
| 65 | 92065H7 | 92065H8 |
| 66 | 92066H7 | 92066H8 |
| 67 | 92067H7 | 92067H8 |
| 68 | 92068H7 | 92068H8 |
| 69 | 92069H7 | 92069H8 |
| 70 | 92070H7 | 92070H8 |
| 71 | 92071H7 | 92071H8 |
| 72 | 92072H7 | 92072H8 |
| 73 | 92073H7 | 92073H8 |
| 74 | 92074H7 | 92074H8 |
| 75 | 92075H7 | 92075H8 |
| 76 | 92076H7 | 92076H8 |
| 77 | 92077H7 | 92077H8 |
| 78 | 92078H7 | 92078H8 |
| 79 | 92079H7 | 92079H8 |
| 80 | 92080H7 | 92080H8 |
| 82 | 92082H7 | 92082H8 |
| 85 | 92085H7 | 92085H8 |
| 88 | 92088H7 | 92088H8 |
| 90 | 92090H7 | 92090H8 |
| 92 | 92092H7 | 92092H8 |
| 95 | 92095H7 | 92095H8 |
| 98 | 92098H7 | 92098H8 |
| 100 | 92100H7 | 92100H8 |
| 105 | 92105H7 * | 92105H8 * |
| 110 | 92110H7 * | 92110H8 * |
| 115 | 92115H7 * | 92115H8 * |
| 120 | 92120H7 * | 92120H8 * |
| 125 | 92125H7 * | 92125H8 * |
| 130 | 92130H7 * | 92130H8 * |
| 135 | 92135H7 * | 92135H8 * |
| 140 | 92140H7 * | 92140H8 * |
| 145 | 92145H7 * | 92145H8 * |
| 150 | 92150H7 * | 92150H8 * |
| 155 | 92155H7 * | 92155H8 * |
| 160 | 92160H7 * | 92160H8 * |

* se samostatnou rukojetí
* so samostatnou rukoväťou
* z oddzielnym uchwytem

Kalibry | Kalibre | Sprawdziany

NASTAVOVACÍ KROUŽEK
NASTAVOVACÍ KRÚŽOK
SPRAWDZIAN PIERŚCIENIOWY

DIN
2250-C



| d | code | d | code | d | code | d | code | d | code | | |
|-----|---------|----|-------|-----|-------|-------|---------|-------|---------|-----|-------|
| 1 | 91001 | 27 | 91027 | 61 | 91061 | 105 | 91105 | 147 | 91147 | 189 | 91189 |
| 1,2 | 91001,2 | 28 | 91028 | 62 | 91062 | 106 | 91106 | 148 | 91148 | 190 | 91190 |
| 1,5 | 91001,5 | 29 | 91029 | 63 | 91063 | 107 | 91107 | 149 | 91149 | 191 | 91191 |
| 1,8 | 91001,8 | 30 | 91030 | 64 | 91064 | 108 | 91108 | 150 | 91150 | 192 | 91192 |
| 2 | 91002 | 31 | 91031 | 65 | 91065 | 109 | 91109 | 151 | 91151 | 193 | 91193 |
| 2,2 | 91002,2 | 32 | 91032 | 66 | 91066 | 110 | 91110 | 152 | 91152 | 194 | 91194 |
| 2,5 | 91002,5 | 33 | 91033 | 67 | 91067 | 111 | 91111 | 153 | 91153 | 195 | 91195 |
| 2,8 | 91002,8 | 34 | 91034 | 68 | 91068 | 112 | 91112 | 154 | 91154 | 196 | 91196 |
| 3 | 91003 | 35 | 91035 | 69 | 91069 | 112,5 | 91112,5 | 155 | 91155 | 197 | 91197 |
| 3,5 | 91003,5 | 36 | 91036 | 70 | 91070 | 113 | 91113 | 156 | 91156 | 198 | 91198 |
| 4 | 91004 | 37 | 91037 | 71 | 91071 | 114 | 91114 | 157 | 91157 | 199 | 91199 |
| 4,5 | 91004,5 | 38 | 91038 | 72 | 91072 | 115 | 91115 | 158 | 91158 | 200 | 91200 |
| 5 | 91005 | 39 | 91039 | 73 | 91073 | 116 | 91116 | 159 | 91159 | 205 | 91205 |
| 6 | 91006 | 40 | 91040 | 74 | 91074 | 117 | 91117 | 160 | 91160 | 210 | 91210 |
| 7 | 91007 | 41 | 91041 | 75 | 91075 | 118 | 91118 | 161 | 91161 | 215 | 91215 |
| 8 | 91008 | 42 | 91042 | 76 | 91076 | 119 | 91119 | 162 | 91162 | 220 | 91220 |
| 9 | 91009 | 43 | 91043 | 77 | 91077 | 120 | 91120 | 162,5 | 91162,5 | 225 | 91225 |
| 10 | 91010 | 44 | 91044 | 78 | 91078 | 121 | 91121 | 163 | 91163 | 230 | 91230 |
| 11 | 91011 | 45 | 91045 | 79 | 91079 | 122 | 91122 | 164 | 91164 | 235 | 91235 |
| 12 | 91012 | 46 | 91046 | 80 | 91080 | 123 | 91123 | 165 | 91165 | 240 | 91240 |
| 13 | 91013 | 47 | 91047 | 81 | 91081 | 124 | 91124 | 166 | 91166 | 245 | 91245 |
| 14 | 91014 | 48 | 91048 | 82 | 91082 | 125 | 91125 | 167 | 91167 | 250 | 91250 |
| 15 | 91015 | 49 | 91049 | 83 | 91083 | 126 | 91126 | 168 | 91168 | 255 | 91255 |
| 16 | 91016 | 50 | 91050 | 84 | 91084 | 127 | 91127 | 169 | 91169 | 260 | 91260 |
| 17 | 91017 | 51 | 91051 | 85 | 91085 | 128 | 91128 | 170 | 91170 | 265 | 91265 |
| 18 | 91018 | 52 | 91052 | 86 | 91086 | 129 | 91129 | 171 | 91171 | 270 | 91270 |
| 19 | 91019 | 53 | 91053 | 87 | 91087 | 130 | 91130 | 172 | 91172 | 275 | 91275 |
| 20 | 91020 | 54 | 91054 | 88 | 91088 | 131 | 91131 | 173 | 91173 | 280 | 91280 |
| 21 | 91021 | 55 | 91055 | 89 | 91089 | 132 | 91132 | 174 | 91174 | 285 | 91285 |
| 22 | 91022 | 56 | 91056 | 90 | 91090 | 133 | 91133 | 175 | 91175 | 290 | 91290 |
| 23 | 91023 | 57 | 91057 | 91 | 91091 | 134 | 91134 | 176 | 91176 | 295 | 91295 |
| 24 | 91024 | 58 | 91058 | 92 | 91092 | 135 | 91135 | 177 | 91177 | 300 | 91300 |
| 25 | 91025 | 59 | 91059 | 93 | 91093 | 136 | 91136 | 178 | 91178 | | |
| 26 | 91026 | 60 | 91060 | 94 | 91094 | 137 | 91137 | 179 | 91179 | | |
| | | | | 95 | 91095 | 137,5 | 91137,5 | 180 | 91180 | | |
| | | | | 96 | 91096 | 138 | 91138 | 181 | 91181 | | |
| | | | | 97 | 91097 | 139 | 91139 | 182 | 91182 | | |
| | | | | 98 | 91098 | 140 | 91140 | 183 | 91183 | | |
| | | | | 99 | 91099 | 141 | 91141 | 184 | 91184 | | |
| | | | | 100 | 91100 | 142 | 91142 | 185 | 91185 | | |
| | | | | 101 | 91101 | 143 | 91143 | 186 | 91186 | | |
| | | | | 102 | 91102 | 144 | 91144 | 187 | 91187 | | |
| | | | | 103 | 91103 | 145 | 91145 | 187,5 | 91187,5 | | |
| | | | | 104 | 91104 | 146 | 91146 | 188 | 91188 | | |

Sady | Sady | Zestawy

Sada mezních válečkových kalibrů
 Sada medzných valčekových kalibrov
 Zestaw mierników granicznych do gwintów metrycznych

DIN
7164



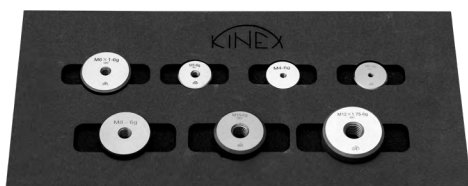
| | | |
|-----------------|---------|------|
| sada obsahuje: | 92003H7 | 3H7 |
| sada obsahuje: | 92004H7 | 4H7 |
| zestaw zawiera: | 92005H7 | 5H7 |
| | 92006H7 | 6H7 |
| | 92008H7 | 8H7 |
| | 92010H7 | 10H7 |
| | 92012H7 | 12H7 |

CODE
92000-H7-012

Sada mezních závitových kroužků
 Sada medzných závitových krúžkov
 Zestaw mierników gwintowanych, pierścienie

DIN
13

CODE
94000-6g-012



| | | |
|-----------------|-----------|-----|
| sada obsahuje: | 94003-6gD | M3 |
| sada obsahuje: | 94004-6gD | M4 |
| zestaw zawiera: | 94005-6gD | M5 |
| | 94006-6gD | M6 |
| | 94008-6gD | M8 |
| | 94010-6gD | M10 |
| | 94012-6gD | M12 |

Sada mezních závitových trnů
 Sada medzných závitových trňov
 Zestaw – Limity gwintu, szpilki gwintowane

DIN
13

CODE
93000-6H-012



| | | |
|-----------------|----------|-----|
| sada obsahuje: | 93003-6H | M3 |
| sada obsahuje: | 93004-6H | M4 |
| zestaw zawiera: | 93005-6H | M5 |
| | 93006-6H | M6 |
| | 93008-6H | M8 |
| | 93010-6H | M10 |
| | 93012-6H | M12 |

Piktogramy



Typ závitu
Typ závitu
Typ gwintu



Vyrobeno dle německé národní normy
Vyrobené podľa nemeckej národnej normy
Wyprodukowane zgodnie z niemieckimi normami technicznymi



Mezní závitový trn - oboustranný (dobrá + zmetková strana)
Medzný závitový trn - oboustranný (dobrá + zmätková strana)
Sprawdzian graniczny - dwustronny (przechodnia + nieprzechodnia strona)



Mezní závitový trn - zmetkový
Medzný závitový trn - zmätkový
Sprawdzian graniczny - nieprzechodni



Mezní závitový trn - dobrý
Medzný závitový trn - dobrý
Sprawdzian graniczny - przechodni



Mezní závitový kroužek - dobrý
Mezní závitový krúžok - dobrý
Sprawdzian pierścieniowy - przechodni



Mezní závitový trn - zmetkový
Medzný závitový krúžok - zmätkový
Sprawdzian pierścieniowy - nieprzechodni



Nastavovací kroužek
Nastavovací krúžok
Sprawdzian pierścieniowy

Uvažujete o bezdrátovém měření?
Uvažujete o bezdrôtovom meraní?
Bezprzewodowe pomiary online



www.iconic-space.com

e-shop: <https://shop.kinexmeasuring.com>

Aktuální katalog a ceník včetně kalibrací najdete na www.kinexmeasuring.com

Fotografie výrobků nemusí vždy odpovídat provedení výrobku z důvodu technické obměny sortimentu.

Tiskové chyby vyhrazeny.

Aktuálny katalóg a cenník vrátane kalibrácií nájdete na www.kinexmeasuring.com

Fotografie výrobkov nemusia vždy zodpovedať prevedeniu výrobku z dôvodu technickej obmeny sortimentu.

Tlačové chyby vyhradené.

Aktualny katalog oraz ceny dostępne są na : www.kinexmeasuring.com

Z powodu różnych wykonań poszczególnych narzędzi, ich wygląd nie zawsze odpowiada zdjęciom na naszych stronach i w sklepie internetowym.

Przepraszamy za błędy wynikłe w druku.



EVROPSKÁ UNIE
Evropský fond pro regionální rozvoj
Operační program Podnikání
a inovace pro konkurenceschopnost



www.kinexmeasuring.com

